

Operator's Manual SUPPLEMENT

MODEL NO.

285-16

285-18

285-162

285-182

WARNING:
Read Engine
Owner's Manual,
Vehicle Operator's
Manual, and
Supplement
Carefully Before
Operating
Vehicle.

Parts List



ORDERING PARTS

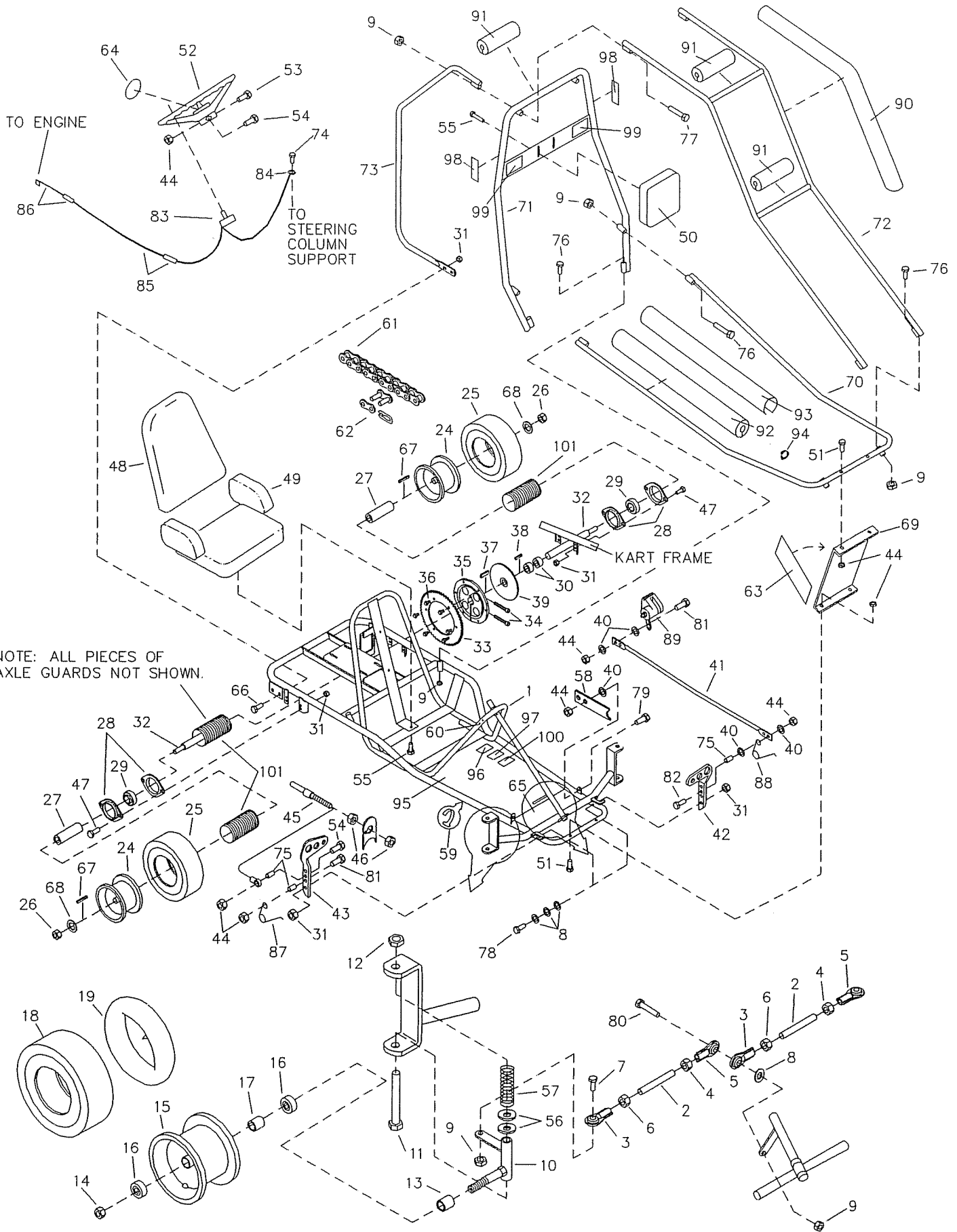
FAST & EASY!

- 1) Seek Part(s) from your models illustrated diagram, cross over REF# to PART#
- 2) Type PART# into sites [Search Box] at GoKartsRus.com TIP! - RIGHT CLICK LINK, SELECT OPEN IN NEW TAB
- 3) Add all needed parts to Shopping Cart | Complete "Checkout" | ✓ Done!

If a part does not come up in a Site Search, please [Contact Us](#) (include part# in email)

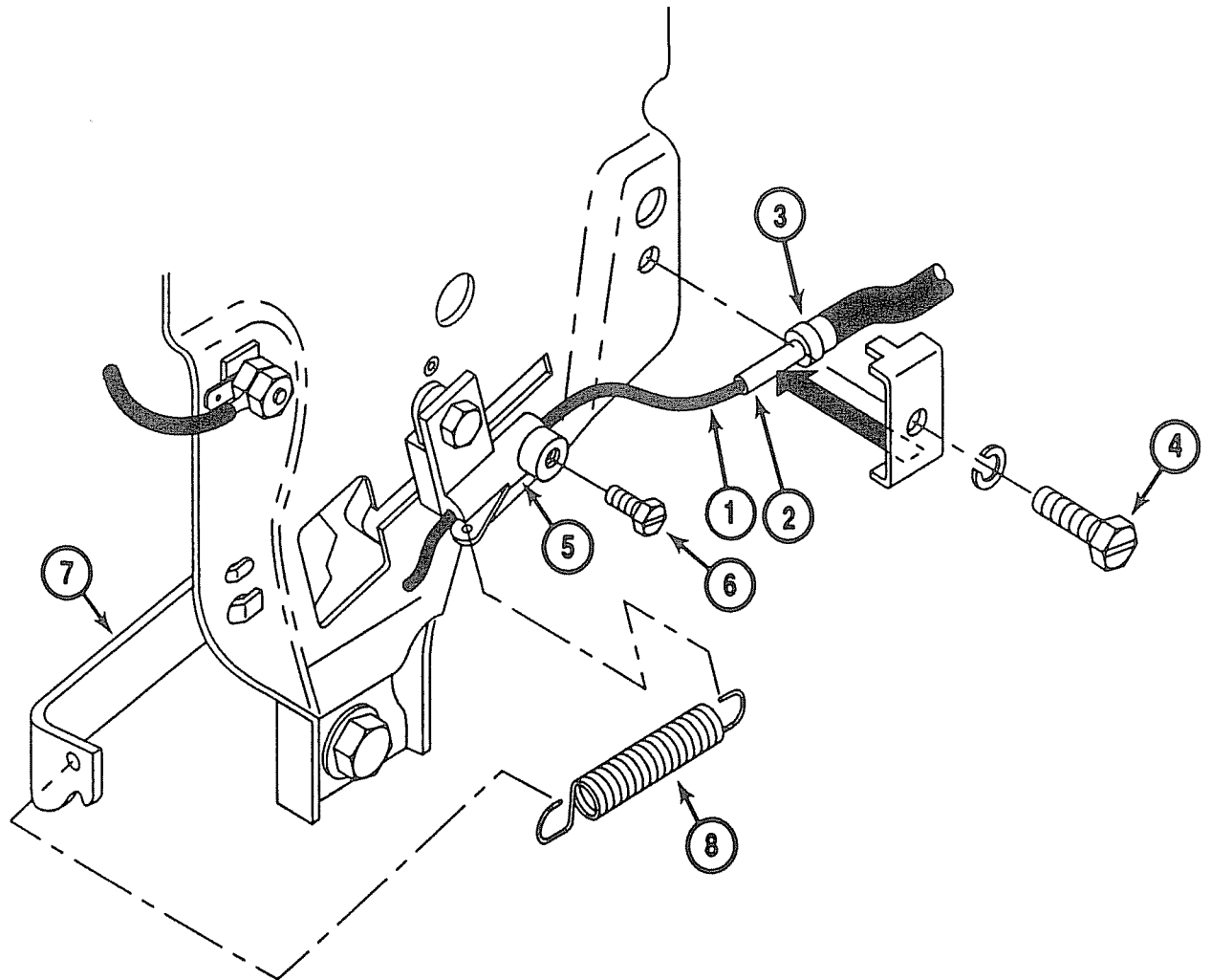
LOWEST PRICE!

BEFORE OPERATING THIS VEHICLE, THE OWNER AND/OR OPERATOR MUST UNDERSTAND THE VEHICLE WAS NOT DESIGNED OR MANUFACTURED TO MEET SPECIFICATIONS FOR USE ON PUBLIC ROADS, STREETS, HIGHWAYS, OR THOROUGHFARES AND HAVE READ AND HAVE AN UNDERSTANDING OF ALL THE INSTRUCTIONS FOR SAFE ASSEMBLY AND OPERATION AS WELL AS THE INSTRUCTIONS GOVERNING THE ENGINE AND OTHER PORTIONS OF THE VEHICLE.



NOTE: ALL PIECES OF AXLE GUARDS NOT SHOWN.

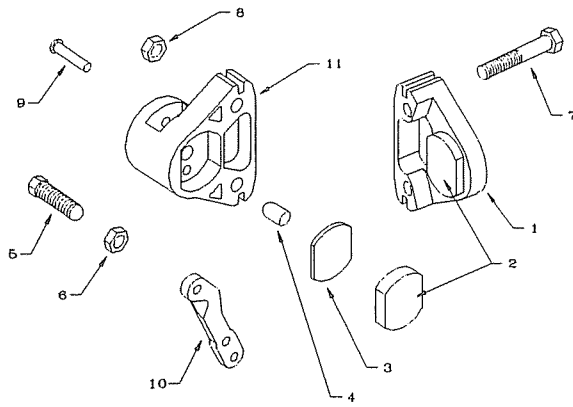
THROTTLE CABLE INSTALLATION



(285-16/-18 Only)

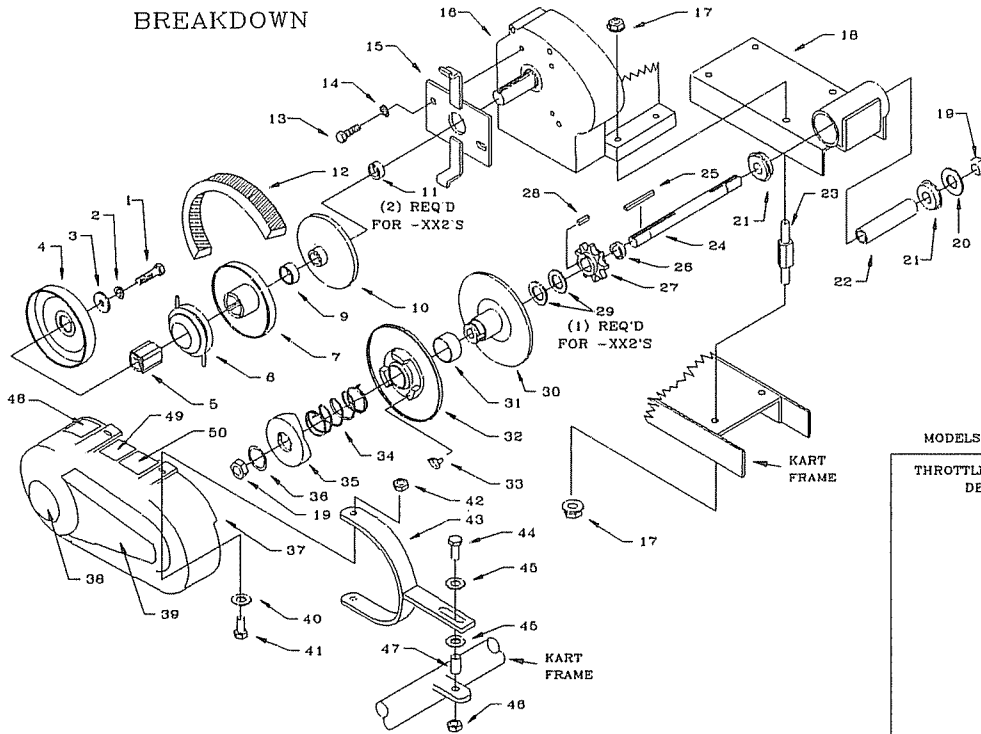
- ASSEMBLY:** Pass the Throttle Cable (Item 1) through the 1628 Cable Retainer (Item 2) and butt the Throttle Cable Housing End (Item 3) against the Inside Shoulder of the 1628 Cable Retainer (Item 2). The 1628 Cable Retainer (Item 2) is to be securely fastened to the engine with the Clamping Screw (Item 4). Pass the Wire End of the Throttle Cable Housing (Item 1) through the hole in the 5928 Cable Stop (Item 5). Before tightening 5929 Cable Stop Screw (Item 6):
1. Ensure 5926 Spring Anchor (Item 7), 5927 Spring (Item 8) and Throttle Cable are installed as illustrated above.
 2. Ensure throttle pedal is in rearward (idle) position.
 3. Ensure that there is no slack in the Throttle Cable Wire End (Item 1) with no tension applied to the spring (Item 8).
 4. Ensure Throttle Cable Housing End (Item 3) is inside and against the 1628 Cable Retainer (Item 2).

CALIPER BREAKDOWN

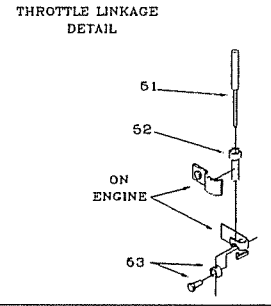


REF. NO	PART NO	DESCRIPTION
ASM	9597	Brake Caliper (incl. 1-11)
ASM	9810	Brake Pad Svc Kit (incl. 1-3)
1	*	Anvil w/Lining
2	*	Brake Lining
3	3928	Backing Plate
4	3930	Actuator Pin
5	3931	Adjuster Pin
6	3932	Nut, Jam
7	9158	Bolt, 3/8-16 x 2-1/4"
8	9085	Nut, 3/8-16 Toplock
ASM	6534	MB-1 Service Kit (incl. 9-11)
9	*	Groove Pin
10	*	Lever
11	*	Brake Housing

TORQUE CONVERTER BREAKDOWN



MODELS 285-162/-182 ONLY



REF. NO	PART NO	DESCRIPTION	REF. NO	PART NO	DESCRIPTION	REF. NO	PART NO	DESCRIPTION
1	1454	Bolt, 5/16-24 x 1.75"	20	1469	Spacer, 5/8ID x .062"	39	9499	Decal (285-16/-162)
2	1124	Washer, 5/16 Split Lock	21	5090	Bearing		1686	Decal (285-18/-182)
3	1398	Washer, Flat	22	1116	Spanner	40	2279	Washer, #8 Flat
ASM	5957	Driver Pulley Assembly (incl. REF. 4-10)	23	1356	Stud	41	2277	Screw, #8 x .5"
4	*	Drum	24	1118	Jackshaft	42	2278	Nut, #8 Lock
5	*	Hub	25	3403	Key, 3/16sq x 2"	43	1537-2	Bracket
6	*	Shoe Assembly	26	1937	Spacer, 5/8ID x .25"	44	1846	Bolt, 1/4-20 x .75"
7	*	Moveable Sheave	27	1125s	Sprocket, 9T #420	45	1854	Washer, 1/4 Flat
9	200349	Bushing	28	1031	Key, 3/16sq x .5"	46	9057	Nut, 1/4-20 Lock
10	*	Stationary Sheave	29	1119	Spacer, 5/8ID x .125"	47	1389	Bushing
11	1938	Spacer, 3/4ID x .375" (-xx's)	ASM	5958	Driven Pulley Assembly (incl. REF. 30-36)	48	6958	Decal, Tire Pressure
	1442	Spacer, 3/4ID x .25" (-xx2's)	30	*	Stationary Sheave	49	4912	Decal, Warning- This Guard...
12	5959	Belt, Asymmetrical	31	*	Bushing	50	1049	Decal, Warning- ...Drive Cover
13	9101	Bolt, 5/16-24 x .5"	32	*	Moveable Sheave	51	1390	Throttle Cable
14	9030	Washer, 5/16 Interlock	33	6804	Button, Nylon	52	1628	Throttle Cable Retainer
15	1494	Mounting Bracket	34	6805	Spring	53	1018	Throttle Cable Stop
16	6010	Engine, 5hp (285-16/-18)	35	*	Cam	NI	9677	Decal, Hot Surfaces
	9737	Engine, 5.5hp (285-162/-182)	36	2477	Retaining Ring	NI	9678	Decal, Engine Exhaust
17	1263	Nut, 5/16-18 Flange	37	1542	Cover	NI	5964	Decal, Oil Warning
18	1110	Chassis	38	1687	Decal (285-18/-182 only)			
19	1136	Nut, 5/8-18 Top Lock						

* = Not Available Separately
 ASM = Assembly
 NI = Not Illustrated

REPAIR PARTS - MODEL 285-16/-18/-162/-182

REF. <u>NO.</u>	PART <u>NO.</u>	<u>DESCRIPTION</u>	REF. <u>NO.</u>	PART <u>NO.</u>	<u>DESCRIPTION</u>
	1	9741-2	60	1463	Bushing, Plastic
ASM	1464	Frame	61	9514	Chain, #420 x 62P (incl. 62)
2	1465	Tie Rod Assembly (incl. 2-6)	62	2037	Master Link, #420
3	1415	Tie Rod	63	4707	Decal, Front Plate (285-16/-162)
4	9092	Rod End - Left Hand Thread		1688	Decal, Front Plate (285-18/-182)
5	1414	Nut, 3/8-24 Right Hand Thread	64	9498	Decal, Steering Wheel (285-16/-162)
6	9024	Rod End - Right Hand Thread		1689	Decal, Steering Wheel (285-18/-182)
7	9146	Nut, 3/8-24 Left Hand Thread	65	1441	Scuff Pad, Floor Pan
8	9091	Bolt, 3/8-16 x 1-1/2"	66	9176	Bolt, 5/16-18 x 1"
9	9085	Washer, 3/8 Flat	67	6123	Key, 1/4" Square x 1-3/4"
10	2457	Nut, 3/8-16 Lock	68	1194	Washer, 3/4" Flat
NI	2458	Spindle - Right Side	69	1607	Front Plate
11	5682	Spindle - Left Side	70	9748-2	Front Bar
12	1012	Bolt, 1/2-13 x 5-1/2"	71	9746-2	Center Bar
13	5157	Nut, 1/2-13 Toplock	72	9749-2	Overhead Bar
14	1046	Spacer, 5/8" x 3/4"	73	9747-2	Rear Upright
15	9509P	Nut, 5/8-11 Toplock	74	9796	Screw, 12-24 x 1/2" Self Tapping
16	5090	Frnt. Wheel Assembly (incl. 16-19)	75	1389	Bushing
17	5950	Bearing	76	2386	Bolt, 3/8-16 x 3-1/2"
18	4915	Spanner	77	6452	Bolt, 3/8-16 x 5"
19	3802	Tire, 145/70 x 6" Knobby	78	1447	Bolt, 5/16-18 x 1-3/4" Shoulder
20	-----	Tube, 6"	79	1846	Bolt, 1/4-20 x 3/4"
21	-----	-----	80	9145	Bolt, 3/8-16 x 1-3/4"
22	-----	-----	81	1847	Bolt, 1/4-20 x 1"
23	-----	-----	82	1848	Bolt, 1/4-20 x 1-1/4"
ASM	3554	Rear Wheel Assembly (incl. 24,25)	ASM	9799	Stop Switch Asm (incl. 83-85)
24	3552	Wheel - 8" Gold	83	1392	Stop Switch
25	3548	Tire, 18/9.5 x 8"	84	1393	Ring Terminal
NI	1430	Tube, 8" (Repair Part Only)	85	1394	Wire, 50" with Splice Connector
26	9162	Nut, 3/4-10 Toplock	86	1406	Wire, to Engine
27	1448	Spacer, 1" ID x 3-9/16"	87	9502	Spring, Left Wound
28	1760	Bearing Flange	88	9503	Spring, Right Wound
29	3941	Bearing	89	9597	Caliper (see Caliper Breakdown)
30	2265	Spacer, 1" ID x 3/4"	ASM	9798*	Foam Replacement Kit (incl. 90-92)
31	1189	Nut, 5/16-18 Toplock	90	9758*	Foam, 43"
32	9740	Axle	91	9808*	Foam, 10"
ASM	6420	Sprocket Assembly (incl. 33-36)	92	9759*	Foam, 30"
33	6282	Sprocket, 54 Teeth 420 Chain	93	9857	Cover, 30" Phoenix (285-16/-162)
34	6701	Bolt, 5/16-18 Socket Head		9856	Cover, 30" MANCO (285-18/-182)
35	6280	Sprocket Hub	94	9776	Clamp, 3/4"
36	1876	Bolt, 1/4-20 x 5/8" Whiz	95	4708	Decal, Floor Pan (285-16/-162)
37	9680	Key, 1/4" x 3/8" x 1-1/4" Long	96	2832	Decal, Warning - No Passengers
38	1775	Key, 1/4" Square x 1-1/4" Long	97	4504	Decal, Warning - Yellow
39	9511	Brake Rotor	98	6540	Decal, Warning: Wear Helmet
40	1854	Washer, #14 Flat	99	8138	Decal, Warning: Entanglement
41	9744-2	Brake Rod	100	8154	Decal, Age Restriction
42	1436	Brake Pedal	101	K285-18	Axle Guard Repair Kit
43	1437	Throttle Pedal	NI	2601	Engine Owner's Manual (285-16/-18)
44	9057	Nut, 1/4-20 Toplock	NI	2684E	Engine Owner's Manual (285-162/-182)
45	1390	Throttle Cable (incl. 46)	NI	6477	Vehicle Operator's Manual
46	9058	Nut, 5/16-24 Jam	NI	9247R3	Assembly Instructions
47	2264	Bolt, 5/16-18 x 3/4"			
48	5159	Seat Back			
49	5160	Seat Bottom			
50	9494	Headrest Pad, Phoenix (285-16/-162)			
	6320	Headrest Pad (285-18/-182)			
51	1849	Bolt, 1/4-20 x 1-1/2"			
52	6038	Steering Wheel			
53	9080	Bolt, 1/4-20 x 2-3/4"			
54	9160	Bolt, 1/4-20 x 7/8" with Nylock			
55	5839	Bolt, 1/4-20 x 3/4" Whiz Flange			
56	9022	Washer, 1/2" Flat			
57	5681	Spring			
58	1982	Pedal Latch			
59	1019	Ty-Wrap			

ASM = Assembly

NI = Not Illustrated

* = Specify Black, Pink, White, or Yellow