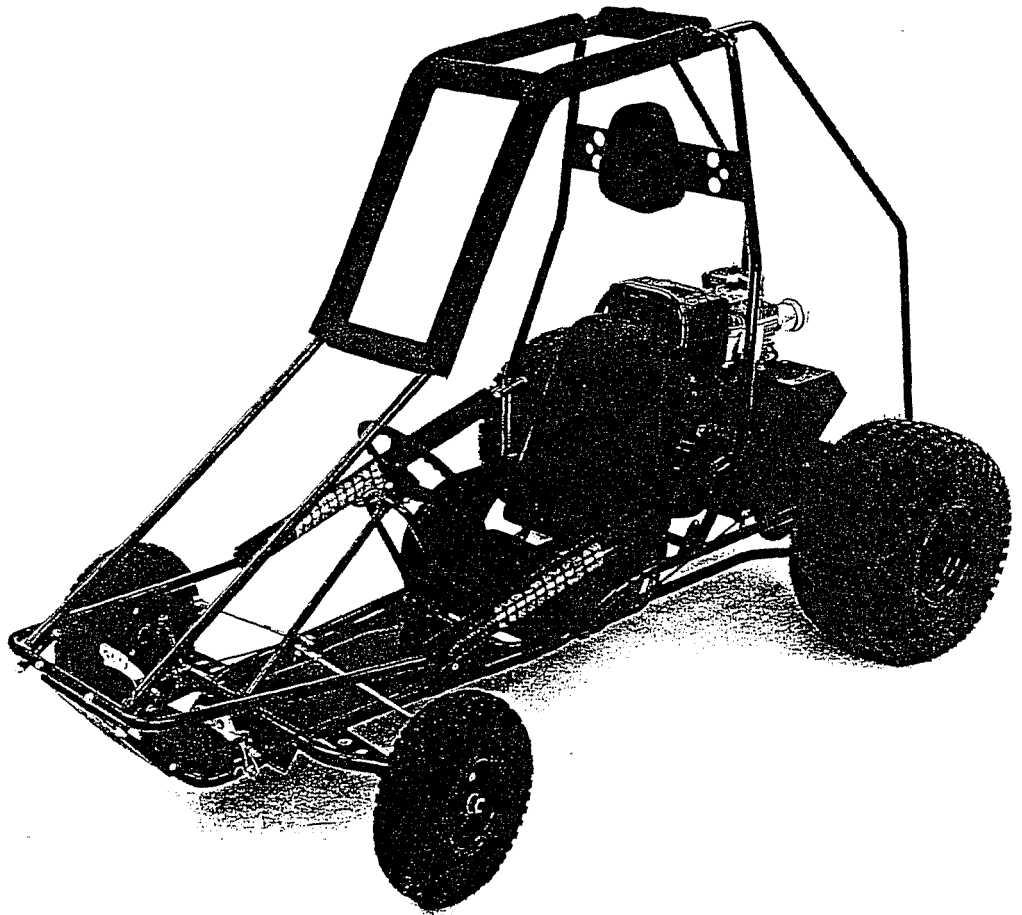


# FOX PRO I Operator's Manual SUPPLEMENT

MANCO MODEL NO.  
386-00

**WARNING:**  
Read Engine  
Owner's Manual,  
Vehicle Operator's  
Manual, and  
Supplement  
Carefully Before  
Operating  
Vehicle.

Parts List



# MANCO

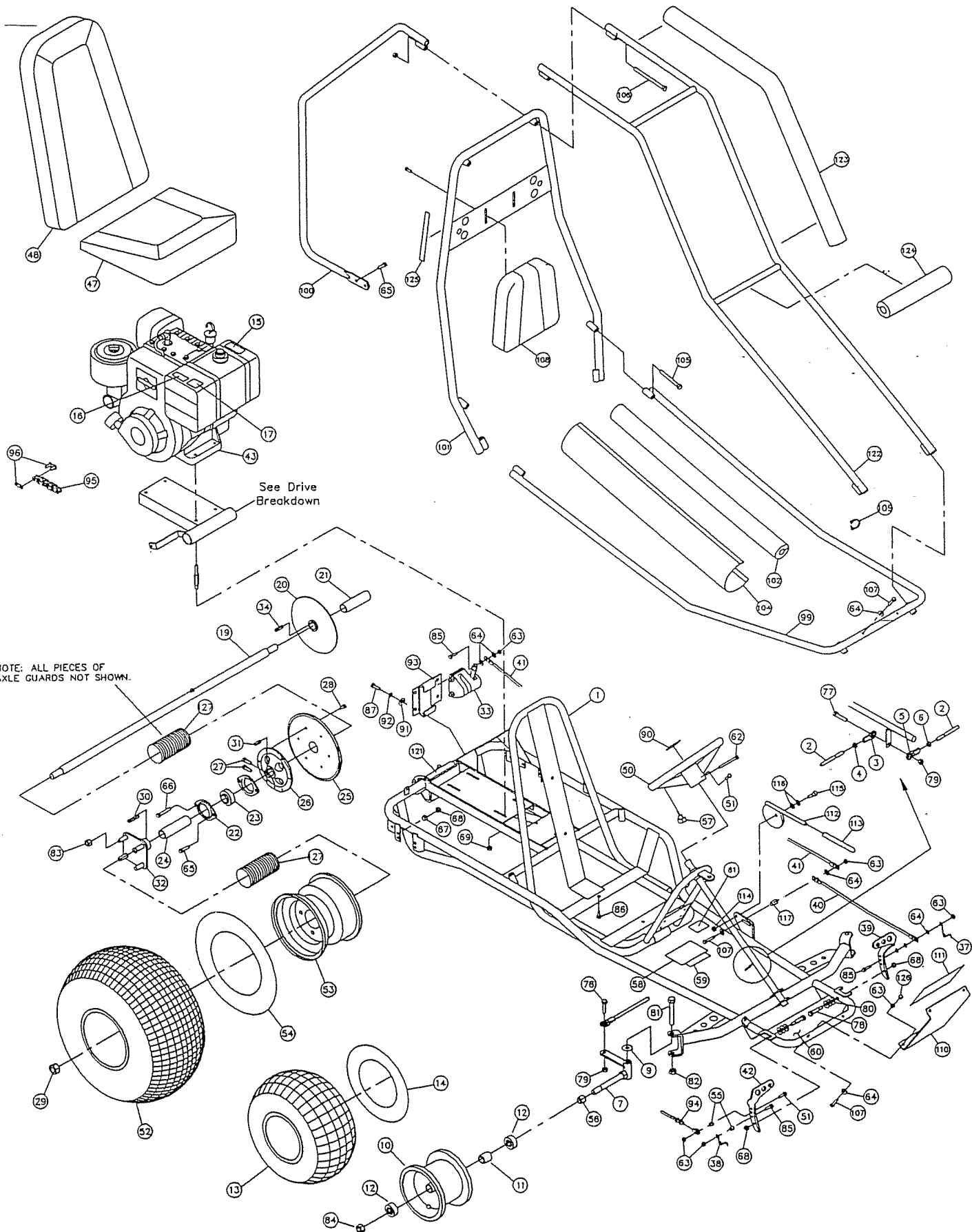
## ORDERING PARTS

- FAST & EASY!**
- 1) Seek Part(s) from your models illustrated diagram, cross over REF# to PART#
  - 2) Type PART# into sites [Search Box] at [GoKartsRus.com](http://GoKartsRus.com) TIP! - RIGHT CLICK LINK, SELECT OPEN IN NEW TAB
  - 3) Add all needed parts to Shopping Cart | Complete "Checkout" | ✓ Done!

If a part does not come up in a Site Search, please [Contact Us](#) (include part# in email)

**LOWEST PRICE!**

BEFORE OPERATING THIS VEHICLE, THE OWNER AND/OR OPERATOR MUST UNDERSTAND THE VEHICLE WAS NOT DESIGNED OR MANUFACTURED TO MEET SPECIFICATIONS FOR USE ON PUBLIC ROADS, STREETS, HIGHWAYS, OR THOROUGHFARES AND HAVE READ AND HAVE AN UNDERSTANDING OF ALL THE INSTRUCTIONS FOR SAFE ASSEMBLY AND OPERATION AS WELL AS THE INSTRUCTIONS GOVERNING THE ENGINE AND OTHER PORTIONS OF THE VEHICLE.



NOTE: ALL PIECES OF AXLE GUARDS NOT SHOWN.

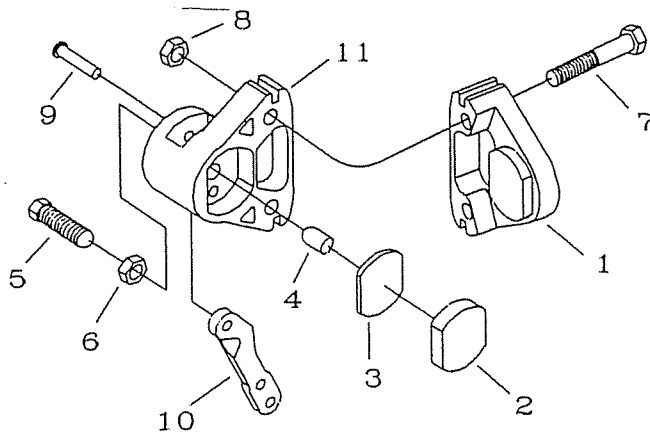
See Drive Breakdown

## REPAIR PARTS - 386-00

REF. NO.	PART NO.	DESCRIPTION	REF. NO.	PART NO.	DESCRIPTION
1	9640-2	Frame Weldment	66	6573	5/16-18 x 1-3/4 Hex Hd Cap Screw
ASM	6430	Tie Rod Assembly (incl. 2-6)	67	9674	Spacer 3/8"ID x 3/8
2	6431	Tie Rod	68	1189	5/16-18 Toplock Hex Nut
3	1414	Rod End, RH Thread	69	1263	5/16-18 Hex Flanged Whiz Nut
4	9092	3/8-24 Hex Jam Nut	70	---	-----
5	1415	Rod End, LH Thread	71	---	-----
6	9024	3/8-24 LH Hex Jam Nut	72	---	-----
7	2457	Spindle, RH	73	---	-----
NI	2458	Spindle, LH	74	---	-----
9	9022	1/2" Flat Washer	75	---	-----
10	9309FP	Wheel Assembly, Front	76	9146	3/8-16 x 1-1/2 Hex Hd Cap Screw
11	5950	Spanner, 5/8ID x 2-1/8	77	9145	3/8-16 x 1-3/4 Hex Hd Cap Screw
12	5090	Bearing, 5/8ID	78	1447	Pedal Bolt
13	4915	Tire, 145/70 x 6 Knobby	79	9085	3/8-16 Toplock Hex Nut
14	3802	Inner Tube, 6"	80	9091	3/8" Flat Washer
15	9677	Decal, Warning: Hot Surfaces	81	1264	1/2-13 x 3-1/2 Hex Hd Cap Screw
16	5964	Decal, Oil Warning	82	1012	1/2-13 Toplock Hex Nut
17	9678	Decal, Warning: Engine Exhaust	83	1428	1/2-13 Cone Wheel Nut
18	---	-----	84	1046	5/8-11 Toplock Hex Nut
19	9694	Axle Shaft	85	1847	1/4-20 x 1 Hex Hd Cap Screw
20	6314	Brake Rotor	86	5839	1/4-20 x 3/4 Flanged Whiz Screw
21	6783	Spacer, 1" ID x 4-1/8	87	2264	5/16-18 x 3/4 Hex Hd Cap Screw
22	6617	Bearing Flange	88	---	-----
23	3941	Bearing, 1" ID	89	---	-----
24	4660	Spacer, 1" ID x 4-7/16	90	1689	Steering Wheel Decal
ASM	6420	Sprocket Assembly (incl. 25-28)	91	9060	5/16 Flat Washer
25	6282	Sprocket, 420 x 54 Teeth	92	1124	5/16 Split Lock Washer
26	6280	Sprocket Hub	93	6490-2	Caliper Mounting Bracket
27	6701	5/16-18 x 1" Soc. Hd Cap Screw	94	9345	Throttle Cable
28	1876	1/4-20 x 5/8 Hex Flanged Whiz	95	9343	Chain, 420 x 72 Links (incl. 96)
29	9162	3/4-10 Toplock Hex Nut	96	2037	420 Masterlink
30	6123	Key, 1/4 sq. x 1-3/4	97	---	-----
31	9680	Key, 1/4 x 3/8 x 1-1/4	98	---	-----
32	1557	Wheel Hub w/ Studs	99	9524-2	Front Bar Weldment
33	9597	Brake Caliper Assembly	100	9527-2	Rear Bar Weldment
34	1775	Key, 1/4 sq. x 1-1/4	101	9522-2	Center Bar Weldment
35	---	-----	102	9759B	Foam, 30" Black
36	---	-----	103	---	-----
37	9502	Pedal Spring, Left Wound	104	9856	Custom Cover
38	9503	Pedal Spring, Right Wound	105	2386	3/8-16 x 3-1/2 Hex Hd Cap Screw
39	1436	Brake Pedal	106	6452	3/8-16 x 5 Hex Hd Cap Screw
40	9638-2	Front Brake Rod	107	1849	1/4-20 x 1-1/2 Hex Hd Cap Screw
41	9639-2	Rear Brake Rod	108	6320	Headrest
42	1437	Throttle Pedal	109	9777	Plastic Hose Clamp - 7/8"ID
43	8144	6.5-HP Engine	110	6395-2	Front Plate
44	---	-----	111	1688	Decal, Front Plate
45	---	-----	112	6773-2	Parking Brake Handle
46	---	-----	113	6442	Brake Handle Cover
47	5160	Seat Bottom	114	6440	5/16-18 Hex Jam Nut
48	5159	Seat Back	115	9172	3/8 x 1/4 Shoulder Bolt
49	---	-----	116	6441	3/8"ID Spring Washer
50	6038	Steering Wheel	117	9869	Spacer, 5/16"ID x 5/18"
51	9160	1/4-20 x 7/8 Hex Hd Cap Screw	118	---	-----
ASM	1412	Wheel Assembly, Rear (incl. 52-54)	119	---	-----
52	1452	Tire, 22 x 11 - 8 Tubeless	120	---	-----
53	1451	Wheel Rim, 8"	121	2873	Decal, Trailer Load
54	1430	Inner Tube, 8" (Repair part only)	122	9525-2	Overhead Bar Weldment
55	1389	Bushing, 1/4"ID x 5/16	123	9758B	Foam, 43" Black
56	5157	Spacer, 5/8"ID x 3/4	124	9808B	Foam, 10" Black
57	9799	Stop Switch Assembly	125	6540	Decal, Warning: Wear Helmet
NI	9643	Extension Wire	126	1443	1/4-20 Hex Acorn Nut
58	4504	Decal, Yellow Warning	127	K389-11	Axle Guard Repair Kit
59	2832	Decal, No Passenger	NI	9247R3	Assembly Instructions
60	1441	Decal, Front Floor Pan	NI	6477	Dingo Operator's Manual
61	8138	Decal, Warning: Entanglement	NI	9675	Honda 6.5-HP Engine Manual
62	9080	1/4-20 x 2-3/4 Hex Hd Cap Screw			
63	9057	1/4-20 Toplock Hex Nut			
64	1854	#14 Flat Washer			
65	9176	5/16-18 x 1 Hex Hd Cap Screw			

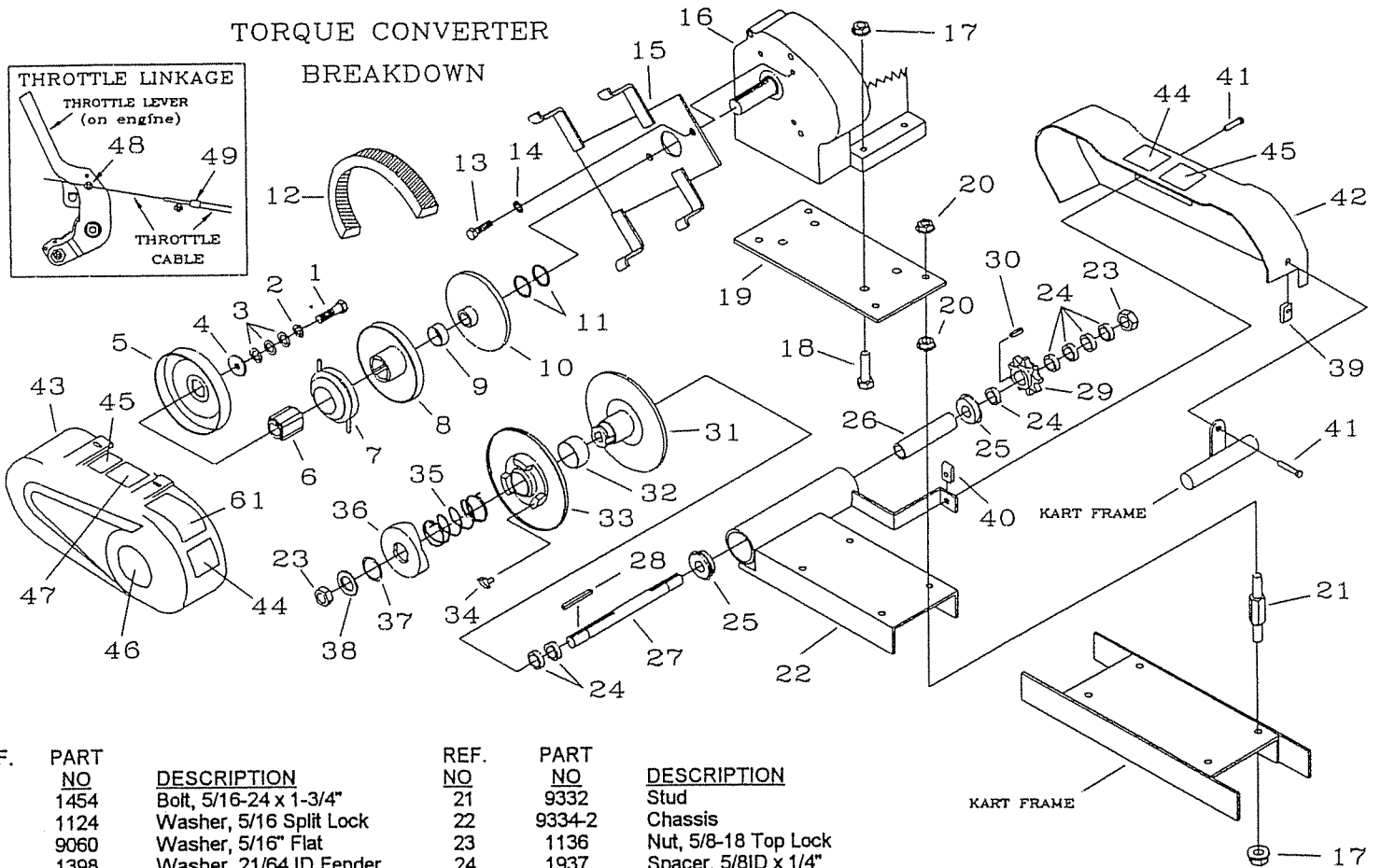
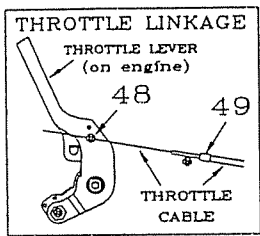
ASM = Assembly  
NI = Not Illustrated

## CALIPER BREAKDOWN



REF. NO	PART NO	DESCRIPTION
ASM	9597	Brake Caliper (incl. 1-11)
ASM	9810	Brake Pad Svc Kit (incl. 1-3)
1	*	Anvil w/Lining
2	*	Brake Lining
3	3928	Backing Plate
4	3930	Actuator Pin
5	3931	Adjuster Pin
6	3932	Nut, Jam
7	9158	Bolt, 3/8-16 x 2-1/4"
8	9085	Nut, 3/8-16 Toplock
ASM	6534	MB-1 Service Kit (incl. 9-11)
9	*	Groove Pin
10	*	Lever
11	*	Brake Housing

## TORQUE CONVERTER BREAKDOWN



REF. NO	PART NO	DESCRIPTION
1	1454	Bolt, 5/16-24 x 1-3/4"
2	1124	Washer, 5/16 Split Lock
3	9060	Washer, 5/16" Flat
4	1398	Washer, 21/64 ID Fender
ASM	5957	Driver Pulley Assembly (incl. REF. 5-10)
5	*	Drum
6	*	Hub
7	*	Shoe Assembly
8	*	Moveable Sheave
9	200349	Bushing
10	*	Stationary Sheave
11	1168	Washer, 3/4 ID Steel
12	9659	Belt, Asymmetrical
13	9101	Bolt, 5/16-24 x 1/2"
14	9030	Washer, 5/16 Interlock
15	9629-2	Mounting Bracket
16	8144	Engine, 6.5hp Honda
17	1263	Nut, 5/16-18 Flange
18	9186	Bolt, 5/16-18 1-1/2"
19	9636-2	Adapter Plate
20	9192	Nut, 3/8-16 Whiz Flange

REF. NO	PART NO	DESCRIPTION
21	9332	Stud
22	9334-2	Chassis
23	1136	Nut, 5/8-18 Top Lock
24	1937	Spacer, 5/8ID x 1/4"
25	5090	Bearing
26	2430	Spanner
27	6317	Jackshaft
28	3403	Key, 3/16sq x 2"
29	1125s	Sprocket, 9T #420
30	1031	Key, 3/16sq x 1/2"
ASM	5958	Driven Pulley Assembly (incl. REF. 31-37)
31	*	Stationary Sheave
32	*	Bushing
33	*	Moveable Sheave
34	6804	Button, Nylon
35	6805	Spring
36	*	Cam
37	2477	Retaining Ring
38	1119	Spacer, 5/8ID x 1/8"
39	2449	Clip Nut, C7343-1420-4
40	6548	Clip Nut, C17453-1420

REF. NO	PART NO	DESCRIPTION
41	9006	Bolt, 1/4-20 x 1/2" Whiz Flange
42	6644	Chainguard
43	1542	Cover
44	1049	Decal, Caution
45	4912	Decal, Warning
46	1687	Decal
47	6958	Decal, Tire Pressure
NI	5964	Decal, Oil Warning
<u>Throttle Linkage Illustration</u>		
48	1018	Cable Stop and Swivel Screw
49	1628	Cable Retainer

\* = Not Available Separately  
 ASM = Assembly  
 NI = Not Illustrated

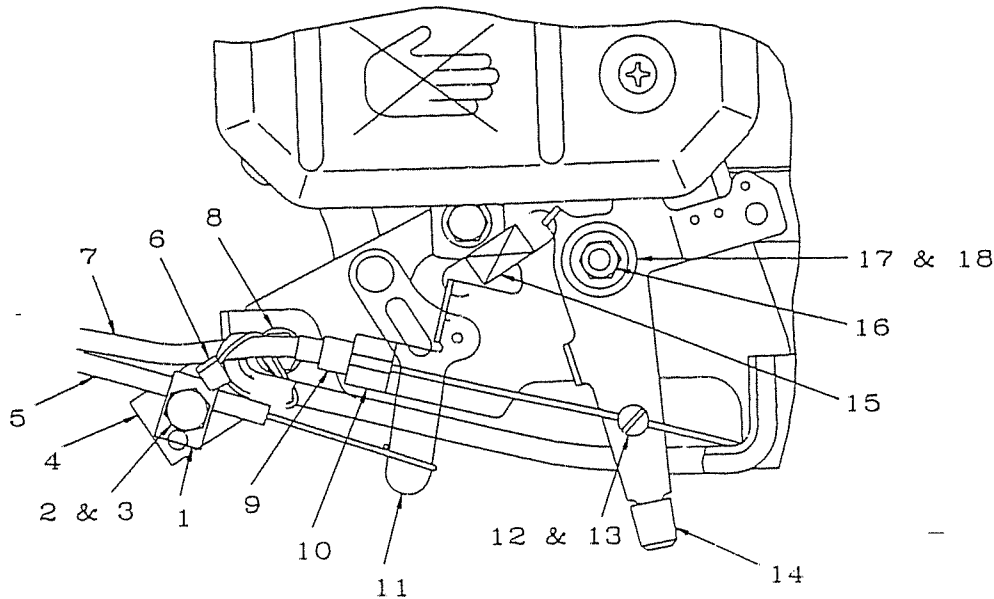
## ADDENDUM TO OPERATOR'S MANUAL SUPPLEMENT

Please make the following corrections to your Operator's Manual Supplement. A model number change has taken place, so if your Manco go-kart is equipped with a 9hp Briggs & Stratton Engine the model number is actually a 389-12. If this is the case, then note the following changes on the Torque Converter Breakdown Illustration:

1. Reference number (1) PN 8203, 3/8-24 x 1-3/4" Bolt, is replaced by PN 2810, 7/16-20 x 1-3/4" Bolt.
2. Reference number (2) PN 1130, 3/8 Split Lock Washer, is replaced by PN 2467, 7/16 Lock Washer.
3. Reference number (9) PN 3887, 1" ID x 1/16" Spacer, quantity of (1) is now quantity (4).
4. Reference number (10) PN 4914, 1" ID x 9/16" Spacer, is not used on the 389-12.
5. Reference number (15) PN 8189, 10hp Tecumseh Engine, is replaced by PN 9491, 9hp Briggs & Stratton Engine.

Please use the diagram and information below for Choke Cable Installation and Throttle Cable Installation.

9-HP ENGINE Model 185437



### INSTALLATION

**Choke Cable Installation:** Place the looped end of the Choke Cable wire over the choke lever (Ref. 11). Position Cable Clamp (Ref. 1) over Choke Cable and install 1/4-20 x 3/4 cap screw (Ref. 2) and 1/4-20 Top Lock Hex Nut (Ref. 3) to hold cable in place. Do not tighten at this time. Pull the knob of the Choke Cable (located on the Console below the Steering Wheel) out approximately 1/4 inch. With the choke lever (Ref. 11) in the "RUN" position, position the Choke Cable (Ref. 5) as far forward as possible and tighten the nut and bolt (Ref. 2&3). **DO NOT OVER TIGHTEN THE NUT AND BOLT HOLDING THE CLAMP.** Ensure that the Choke Cable operates freely after tightening, if not, loosen the nut and bolt slightly.

**Throttle Cable Installation:** Pass the throttle cable through the Throttle Cable Retainer (Ref. 9) and butt the throttle cable housing end against the inside shoulder of the Throttle Cable Retainer. The Throttle Cable Retainer is secured by squeezing the top of the throttle cable bracket (Ref. 10) around the small diameter of the Throttle Cable Retainer. Pass the end of the throttle cable through the Cable Stop Nut (Ref. 12) and tighten the Swivel Screw (Ref. 13)

1. Ensure that the Extension Spring (Ref. 15) is installed as illustrated.
2. Ensure that the Throttle Pedal is in the rearward (idle) position.
3. Ensure that the Throttle Cable Housing is inside the Throttle Cable Retainer.
4. Tywrap the Throttle Cable Housing to the plastic engine cover as shown by inserting the Tywrap (Ref. 6) through the Choke Lever Slot and around the Throttle Cable Housing. The Tywrap must be tighten sufficient to prevent the Throttle Cable Housing from being displaced from the Throttle Cable Retainer when moving the Throttle Lever on the engine.

REF NO.	PART NO.	DESCRIPTION	REF NO.	PART NO.	DESCRIPTION
1	9394	Choke Cable Clamp	10		Supplied with Engine
2	1846	1/4-20 x 3/4 Hex Cap Screw Gr5	11		Supplied with Engine
3	9057	1/4-20 Top Lock Hex Nut	12	2748	Cable Stop Nut
4	9327	Choke Cable Bracket	13	2666	Swivel Screw
5	9344	Choke Cable	14		Supplied with Engine
6	1019	Tywrap	15	9346	Extension Spring
8	9345	Throttle Cable	16		Supplied with Engine
9	3827	Throttle Cable Retainer	17	9091	3/8 Plain Washer
			18	1854	#14 Plain Washer