

Operator's Manual SUPPLEMENT

Manco Model No.
389-00



ORDERING PARTS

FAST & EASY!

- 1) Seek Part(s) from your models illustrated diagram, cross over REF# to PART#
- 2) Type PART# into sites [Search Box] at GoKartsRus.com TIP! - RIGHT CLICK LINK, SELECT OPEN IN NEW TAB
- 3) Add all needed parts to Shopping Cart | Complete "Checkout" | ✓ Done!

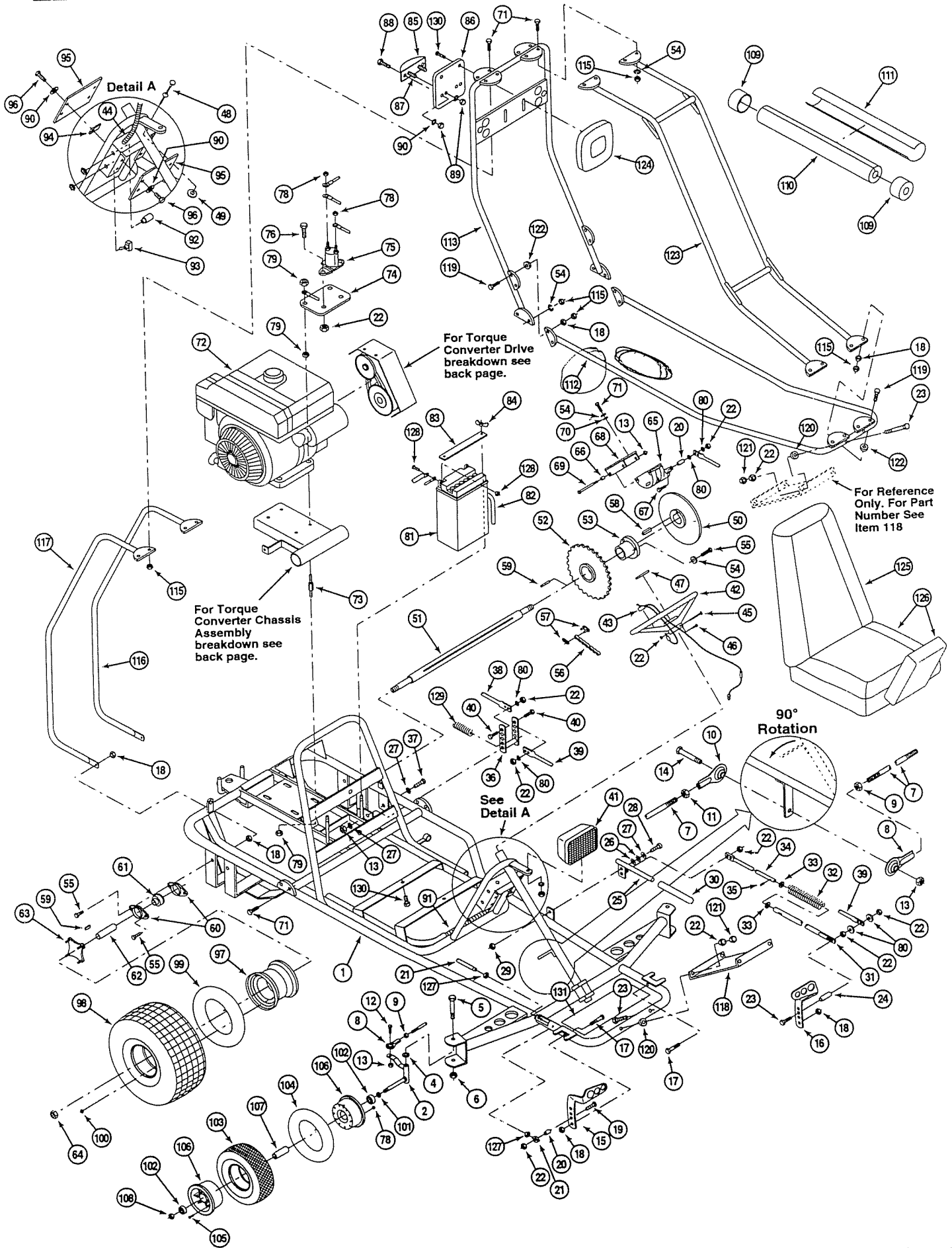
If a part does not come up in a Site Search, please [Contact Us](#) (include part# in email)

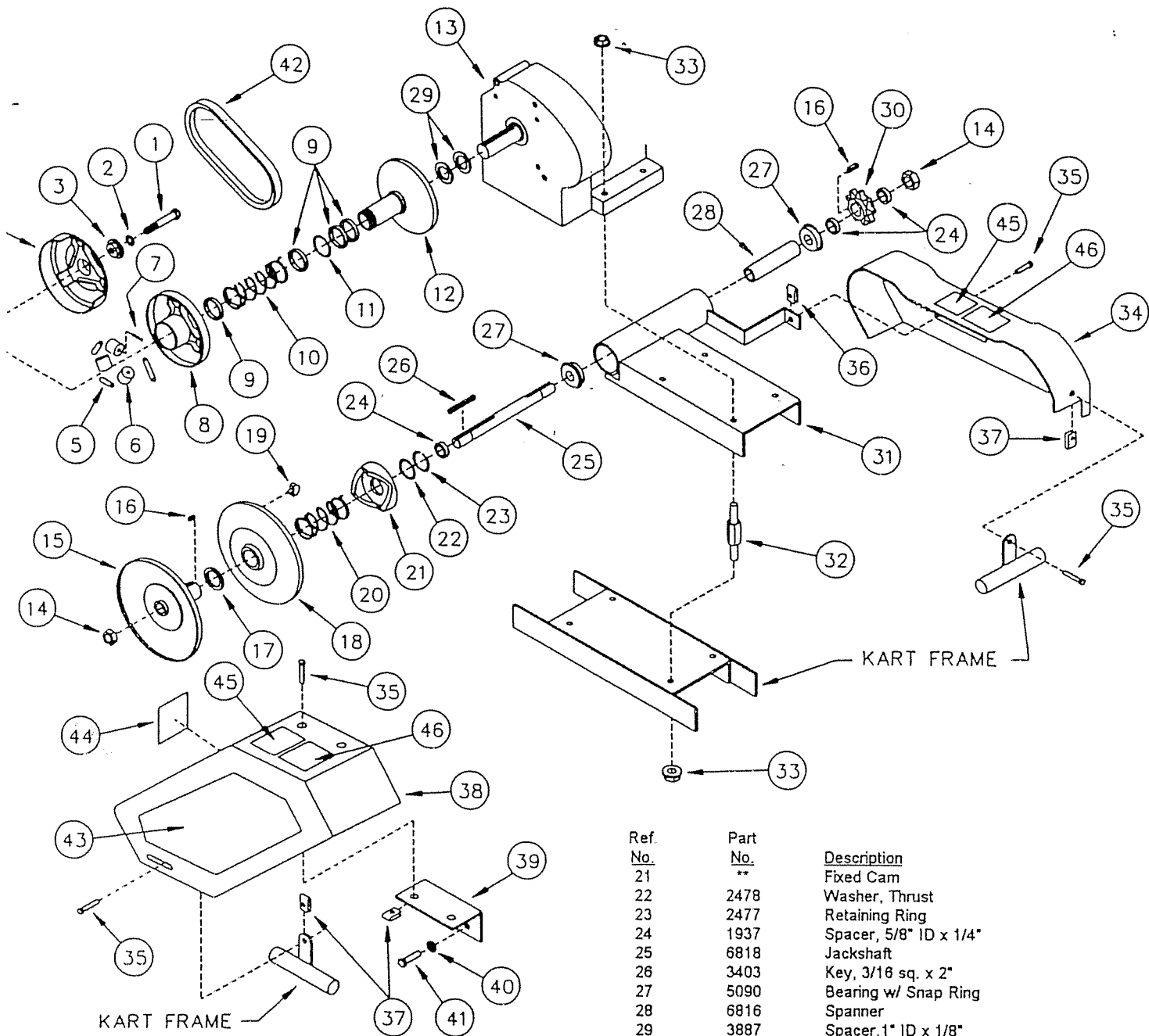
LOWEST PRICES!

REPAIR PARTS

Model 389-00

REF. NO.	PART NO.	DESCRIPTION	REF. NO.	PART NO.	DESCRIPTION
1	6291-2	Frame	59	6123	1/4 Sq. x 1-3/4 Key
2	2457	R.H. Spindle	60	1760	Bearing Flange
NI	2458	L.H. Spindle	61	3941	Precision/Seal Bearing
4	9022	1/2 Flat Washer	62	4660	Spacer 1.0 I.D. x 4-7/16
5	1264	1/2-13 x 3-1/2 Hex Cap Screw	63	1557	Hub/Flange Assembly
6	1012	1/2-13 Top Lock Hex Nut	64	9052	3/4-16 Top Lock Hex Nut
ASM	6430	Tie Rod Assembly	65	6455	Caliper (See Breakdown on Back Page)
7	6431	Tie Rod	66	3904	5/8 x 5/8 Spacer
8	1414	Rod End R.H.	67	1848	1/4-20 x 1-1/4 Hex Cap Screw
9	9092	3/8-24 R.H. Thread Jam Nut	68	6490-2	Caliper Mounting Bracket Assembly
10	1415	Rod End L.H.	69	2386	3/8-16 x 3.5 Hex Screw
11	9024	3/8-24 L.H. Thread Jam Nut	70	9060	5/16 Flat Washer
12	9146	3/8-16 x 1-1/2 Hex Cap Screw Gr5	71	1275	5/16-18 x 3/4 Hex Cap Screw Gr5
13	9085	3/8-16 Top Lock Hex Nut	72	6290	9-HP Engine (See breakdown on Back Page)
14	9158	3/8-16 x 2-1/4 Hex Cap Screw Gr5	73	6374	Engine Support Spacer
15	6309	Throttle Pedal	74	6304-2	Solenoid Bracket
16	6293	Brake Pedal	75	2084	Solenoid
17	9110	3/8 x 7/8 Shoulder Bolt Gr5	76	1844	1/4-20 x 1/2 Hex Cap Screw Gr5
18	1189	5/16-18 Top Lock Hex Nut	77	1019	Tywrap
19	1847	1/4-20 x 1 Hex Cap Screw Gr5	78	1186	1/4-20 Hex Nut Whiz No Flange
20	1389	Bushing 1/4 I.D. x 5/16	79	1263	5/16-18 Hex Nut Flange Whiz
21	6275	Throttle Cable	80	1854	1/4 Flat Washer
22	9057	1/4-20 Top Lock Hex Nut	81	3633	Battery
23	1849	1/4-20 x 1-1/2 Hex Cap Screw Gr5	82	6520	Vent Tube
24	6349	Bushing 5/16 O.D. x 22 Ga	83	6302-2	Battery Clamp Bar
25	6404-2	Brake Lever	84	6481	1/4-20 Wing Nut
26	6441	3/8 I.D. Spring Washer	85	6508	Tail Light Assembly
27	9091	3/8 Flat Washer	NI		Tail Light Bulb
28	6439	3/8 Dia. x 3/8 Shoulder Bolt	86	6305-2	Tail Light Mtg. Bracket
29	6440	5/16-18 Jam Nut	87	2861	10-32 x 1/2 Slot Fill. Hd. Mach Screw
30	6442	Brake Handle Cover	88	6192	10-32 x 5/8 Slot Fill. Hd. Mach Screw
ASM	6411-2	Parking Brake Rod Assembly	89	6193	10-32 Hex Acorn Nut
31	6412	Parking Brake Tube	90	6039	10 Inter Lock Washer
32	6413	Compression Spring	91	6504	Poly Loom 12 Inch
33	6410	1/4 x .734 Dia. Flat Washer	92	6344	Start Switch
34	6408	Parking Brake Rod	93	6391	Light Switch
35	6414	1/8 x 1/2 Spirol Pin	94	5135	10-24 Tinnerman Nut
36	6445-2	Brake Linkage	95	6301-2	Control Cover
37	6452	3/8-16 x 5 Hex Cap Screw Gr5	96	6046	10-24 x 1/2 Hex Machine Screw
38	4986-2	Brake Rod	ASM	1412	Rear Wheel Assembly - 22 x 11 x 8
39	6292-2	Brake Rod	97	1451	Wheel Hub 8 Inch Steel
40	1846	1/4-20 x 3/4 Hex Cap Screw Gr5	98	1452	22 x 11-8 Tubeless ATV Tire
ASM	6364	Headlight/Wire Assembly	99	1430	18-9.50 x 8 Tube (Repair Part Only)
41	2963	Headlight	100	1428	Lug Nut
NI	2964	Headlight Bulb	101	5157	5/8 x 3/4 Spacer
NI	6389	Headlight Pos. Wire Assembly	ASM	3803B	Wheel Assembly 6 Inch Turf Saver
NI	6390	Headlight Neg. Wire Assembly	102	1093	Bearing 5/8 I.D. w/o Snap Ring
42	6038	Steering Wheel	103	3801S	Tire 15 x 6-6 Turf Saver
43	6394	Stop Switch Assembly	104	3802	Inner Tube 6 Inch - JS87N Stem
44	6503	7 Inch Poly-Loom	105	5839	1/4-20 x 3/4 Hex Flange Whiz
45	9080	1/4-20 x 2-3/4 Hex Cap Screw Gr5	106	1092-2	Wheel Half 6 Inch Untapped
46	9160	1/4-20 x 7/8 Nylok Hex Cap Screw Gr5	107	5950	Spanner 5/8 I.D. x 2-1/8
47	3296	MPI Steering Wheel Decal	108	1046	5/8-11 Top Lock Hex Nut
48	6313	Choke Cable	NI	1689	Decal Dingo
49	6353	Special Washer	109	6383	Custom Pad Endcap
50	6314	Rotor	110	6524	Custom Pad
51	6435	Axle Shaft	111	6497	Custom Cover
ASM	2944	Sprocket Assembly	112	6380-2	Front Bar
52	2528	Sprocket	113	6333-2	Center Bar
53	2531	Tapered Bushing w/Key	114		Not Used
54	1124	5/16 Splittlock Washer	115	4081	5/16-18 Acorn Nut
55	9122	5/16-18 x 1-1/4 Hex Screw	116	6310-2	Left Rear Bar
56	6373	Chain 420 x 66 OS w/Masterlink	117	6496-2	Right Rear Bar
57	2037	#420 Masterlink	118	6395-2	Front Plate
58	3712	1/4 Sq. x 1 Key	119	2532	5/16-18 x 1 Hex Cap Screw Gr5



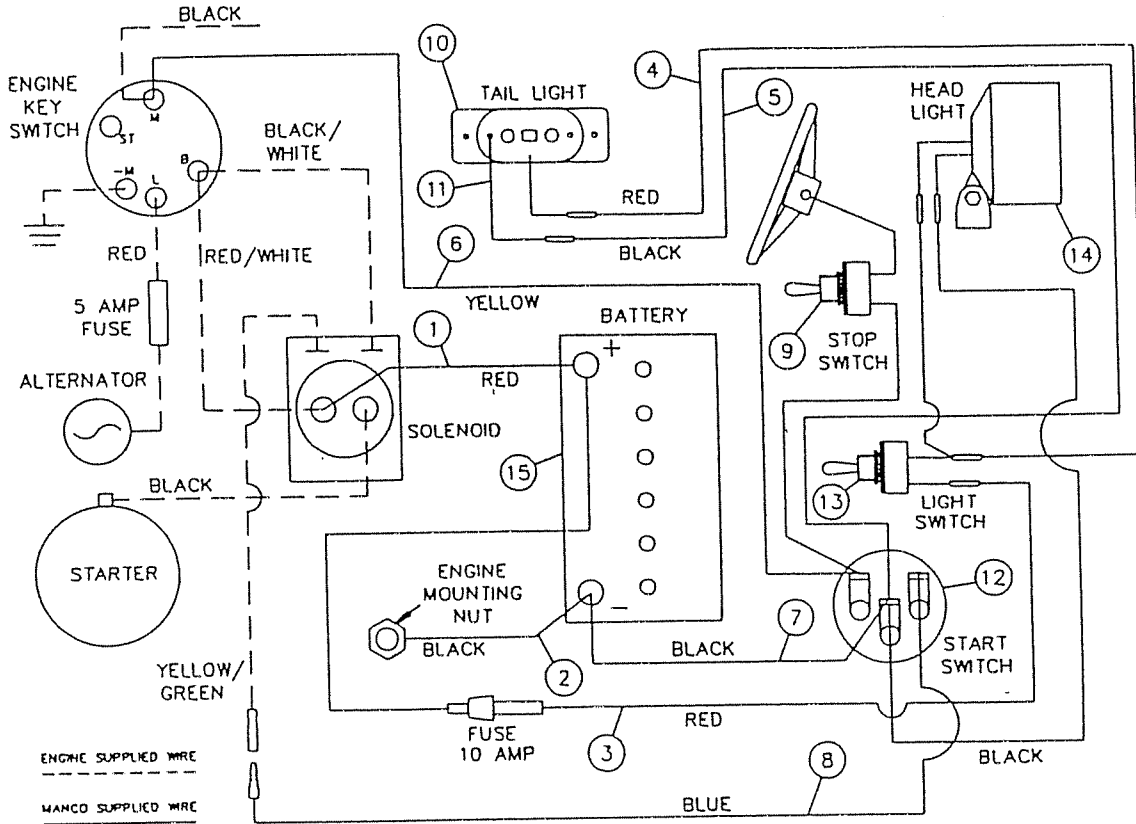


Ref. No.	Part No.	Description
1	2810	Bolt, 7/16-20 x 1-3/4"
2	2467	Washer, 7/16 Lock
3	2468	Washer, Pilot
ASM	2594	Driver Pulley (incl. 4-12)
4	**	Cover and Drive Plate
5	2472	Spring, Extension
6	2470	Cam Roller
7	2471	Spring Clip
8	**	Moveable Face and Hub
9	2474	Bushing, Guide
10	2475	Spring, Compression
11	**	Retaining Ring, Spirol
12	**	Fixed Face and Post
13	9392	Engine, 9hp
14	1136	Nut, 5/8-18 Toplock
ASM	2432	Driven Pulley (incl. 15-23)
15	**	Fixed Face and Post
16	1031	Key, 3/16 sq. x 1/2"
17	2483	Spacer
18	**	Moveable Face and Cam
19	2516	Button Insert
20	2480	Spring, Torsion

Ref. No.	Part No.	Description
21	**	Fixed Cam
22	2478	Washer, Thrust
23	2477	Retaining Ring
24	1937	Spacer, 5/8" ID x 1/4"
25	6818	Jackshaft
26	3403	Key, 3/16 sq. x 2"
27	5090	Bearing w/ Snap Ring
28	6816	Spanner
29	3887	Spacer, 1" ID x 1/8"
30	1125s	Sprocket, 420 P x 9 Teeth
31	9334-2	TAV Chassis
32	6374	Stud
33	1263	Nut, 5/16-18 Whiz Flange
34	6644	Chainguard
35	9006	Bolt, 1/4-20 x 1/2" Whiz Flange
36	6548	Clip Nut, C17453-1420
37	2449	Clip Nut, C7343-1420-4
38	2415	Cover, TAV
39	2448	Mounting Bracket
40	1130	Washer, 3/8 Split Lock
41	4070	Bolt, 3/8-16 x 3/4"
42	2433	Belt
43	6604-TC	Decal, TAV Cover
44	6958	Decal, Tire Pressure
45	4912	Decal, Warning
46	1049	Decal, Caution
NI	9877	Decal, Hot Surfaces
NI	9678	Decal, Engine Exhaust
NI	5964	Decal, Oil Warning

ASM = Assembly
 NI = Not Illustrated
 ** = Not Available Separately

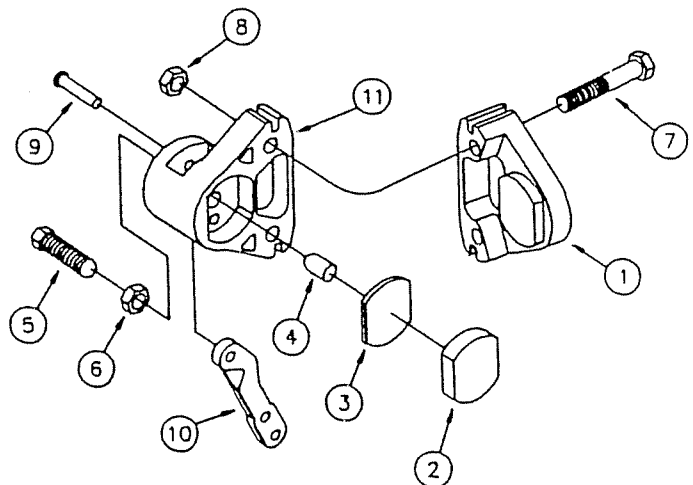
WIRING DIAGRAM



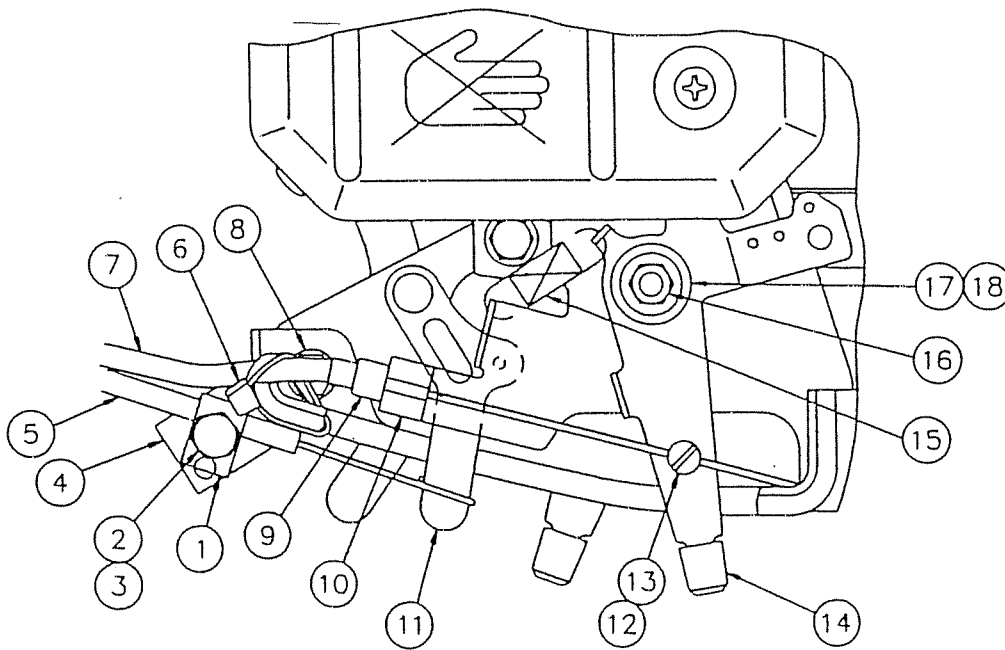
REF NO.	PART NO.	DESCRIPTION	REF NO.	PART NO.	DESCRIPTION
1	3611	Battery Cable, Red 9 In.	NI	6813	Poly Loom "Outlet"
2	3610	Battery Cable, Black 9 In.	9	6394	Stop Switch Asm
ASM	9376	Wiring Harness	10	6508	Tail Light Asm
3	9377	Wire, Solenoid/Light Switch (Red)	NI	NI	Tail Light Bulb
4	9379	Wire, Taillight/Light Switch (Red)	11	6319	Wire, Tail Light Ground
5	9381	Wire, Taillight/Switch (Black)	12	6344	Start Switch
6	9383	Wire, Engine/Switch (Yellow)	13	6391	Light Switch Asm
7	6386	Wire, Batt Gnd/Switch (Black)	14	6364	Headlight Asm
8	9385	Wire, Solenoid/Switch (Blue)	NI	2964	Headlight Bulb
NI	6505	Poly Loom 43 Inch	15	3633	Battery
NI	6897	Poly Loom 28 Inch	NI	9389	Fuse 10 Amp
NI	6763	Poly Loom "Tee"			

CALIPER BREAKDOWN

REF NO.	PART NO.	DESCRIPTION
ASM	9597	Brake Caliper (incl. 1-11)
ASM	9810	Brake Pad Svc Kit (incl. 1-3)
1	*	Anvil w/Lining
2	*	Brake Lining
3	3928	Backing Plate
4	3930	Actuator Pin
5	3931	Adjuster Pin
6	3932	Nut, Jam
7	9158	Bolt, 3/8-16 x 2-1/4"
8	9085	Nut, 3/8-16 Toplock
ASM	6534	MB-1 Service Kit (incl. 9-11)
9	*	Groove Pin
10	*	Lever
11	*	Brake Housing



9-HP ENGINE Model 185437



INSTALLATION

Choke Cable Installation: Place the looped end of the Choke Cable wire cover the choke lever (Ref. 11). Position Cable Clamp (Ref. 1) over Choke Cable and install 1/4-20 x 3/4 cap screw (Ref. 2) and 1/4-20 Top Lock Hex Nut (Ref. 3) to hold cable in place. Do not tighten at this time. Pull the knob of the Choke Cable (located on the Console below the Steering Wheel) out approximately 1/4 inch. With the choke lever (Ref. 11) in the "RUN" position, position the Choke Cable (Ref. 5) as far forward as possible and tighten the nut and bolt (Ref. 2&3). **DO NOT OVER TIGHTEN THE NUT AND BOLT HOLDING THE CLAMP.** Ensure that the Choke Cable operates freely after tightening, if not, loosen the nut and bolt slightly.

Throttle Cable Installation: Pass the throttle cable through the Throttle Cable Retainer (Ref. 9) and butt the throttle cable housing end against the inside shoulder of the Throttle Cable Retainer. The Throttle Cable Retainer is secured by squeezing the top of the throttle cable bracket (Ref. 10) around the small diameter of the Throttle Cable Retainer. Pass the end of the throttle cable through the Cable Stop Nut (Ref. 12) and tighten the Swivel Screw (Ref. 13)

1. Ensure that the Extension Spring (Ref. 15) is installed as illustrated.
2. Ensure that the Throttle Pedal is in the rearward (idle) position.
3. Ensure that the Throttle Cable Housing is inside the Throttle Cable Retainer.
4. Tywrap the Throttle Cable Housing to the plastic engine cover as shown by inserting the Tywrap (Ref. 6) through the Choke Lever Slot and around the Throttle Cable Housing. The Tywrap must be tighten sufficient to prevent the Throttle Cable Housing from being displaced from the Throttle Cable Retainer when moving the Throttle Lever on the engine.

REF NO.	PART NO.	DESCRIPTION	REF NO.	PART NO.	DESCRIPTION
1	9394	Choke Cable Clamp	10		Supplied with Engine
2	1846	1/4-20 x 3/4 Hex Cap Screw Gr5	11		Supplied with Engine
3	9057	1/4-20 Top Lock Hex Nut	12	2748	Cable Stop Nut
4	9327	Choke Cable Bracket	13	2666	Swivel Screw
5	9344	Choke Cable	14		Supplied with Engine
6	1019	Tywrap	15	9346	Extension Spring
7	9345	Throttle Cable	16		Supplied with Engine
8		Supplied with Engine	17	9091	3/8 Plain Washer
9	3827	Throttle Cable Retainer	18	1854	#14 Plain Washer