

Operator's Manual SUPPLEMENT

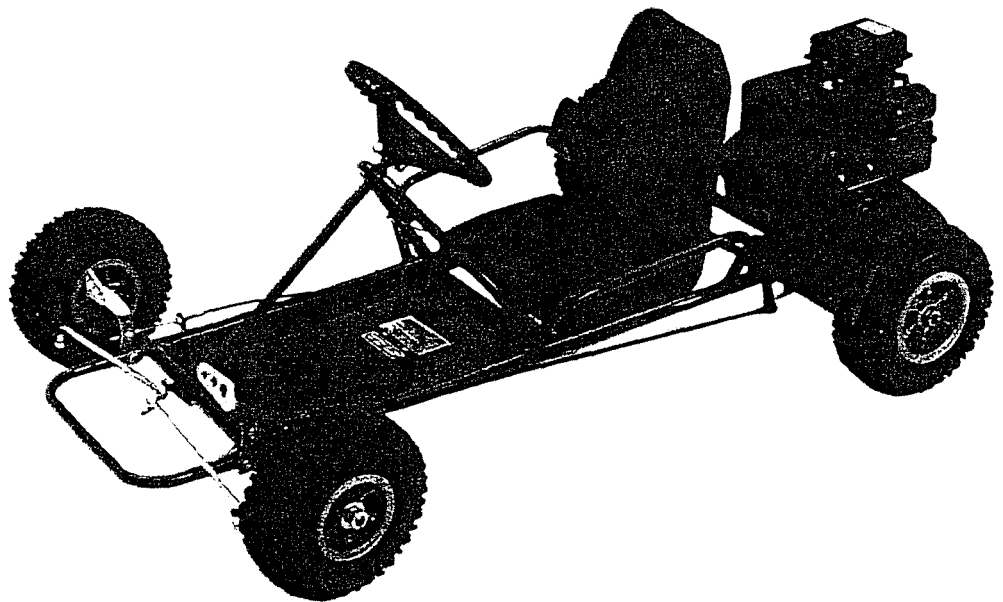
MANCO MODEL NO.

400-11

400-16

WARNING:
Read Engine
Owner's Manual,
Vehicle Operator's
Manual, and
Supplement
Carefully Before
Operating
Vehicle.

Parts List



ORDERING PARTS

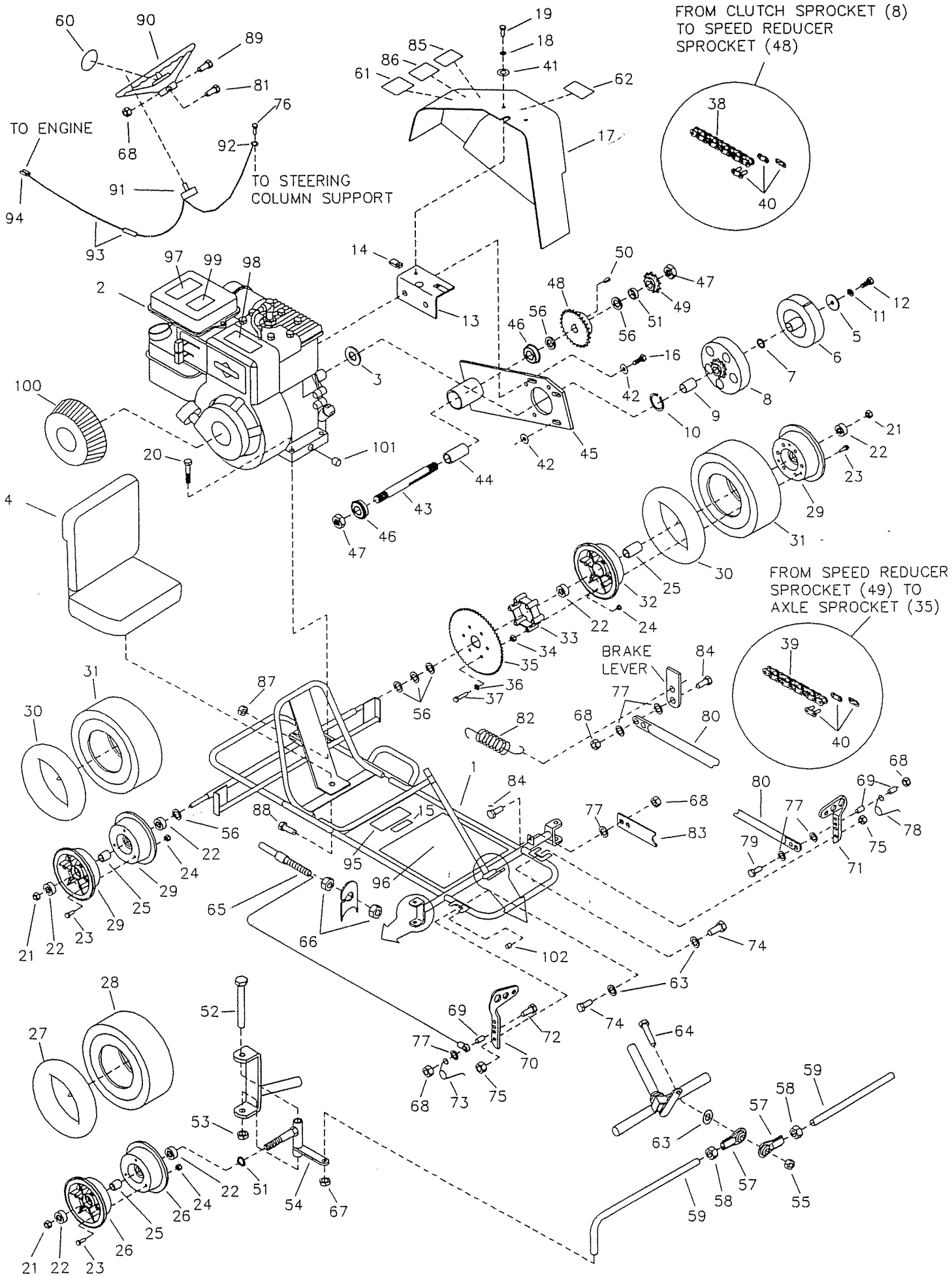
FAST & EASY!

- 1) Seek Part(s) from your models illustrated diagram, cross over REF# to PART#
- 2) Type PART# into sites [Search Box] at GoKartsRus.com TIP! - RIGHT CLICK LINK, SELECT OPEN IN NEW TAB
- 3) Add all needed parts to Shopping Cart | Complete "Checkout" | ✓ Done!

If a part does not come up in a Site Search, please [Contact Us](#) (include part# in email)

LOWEST PRICES!

BEFORE OPERATING THIS VEHICLE, THE OWNER AND/OR OPERATOR MUST UNDERSTAND THE VEHICLE WAS NOT DESIGNED OR MANUFACTURED TO MEET SPECIFICATIONS FOR USE ON PUBLIC ROADS, STREETS, HIGHWAYS, OR THOROUGHFARES AND HAVE READ AND HAVE AN UNDERSTANDING OF ALL THE INSTRUCTIONS FOR SAFE ASSEMBLY AND OPERATION AS WELL AS THE INSTRUCTIONS GOVERNING THE ENGINE AND OTHER PORTIONS OF THE VEHICLE.

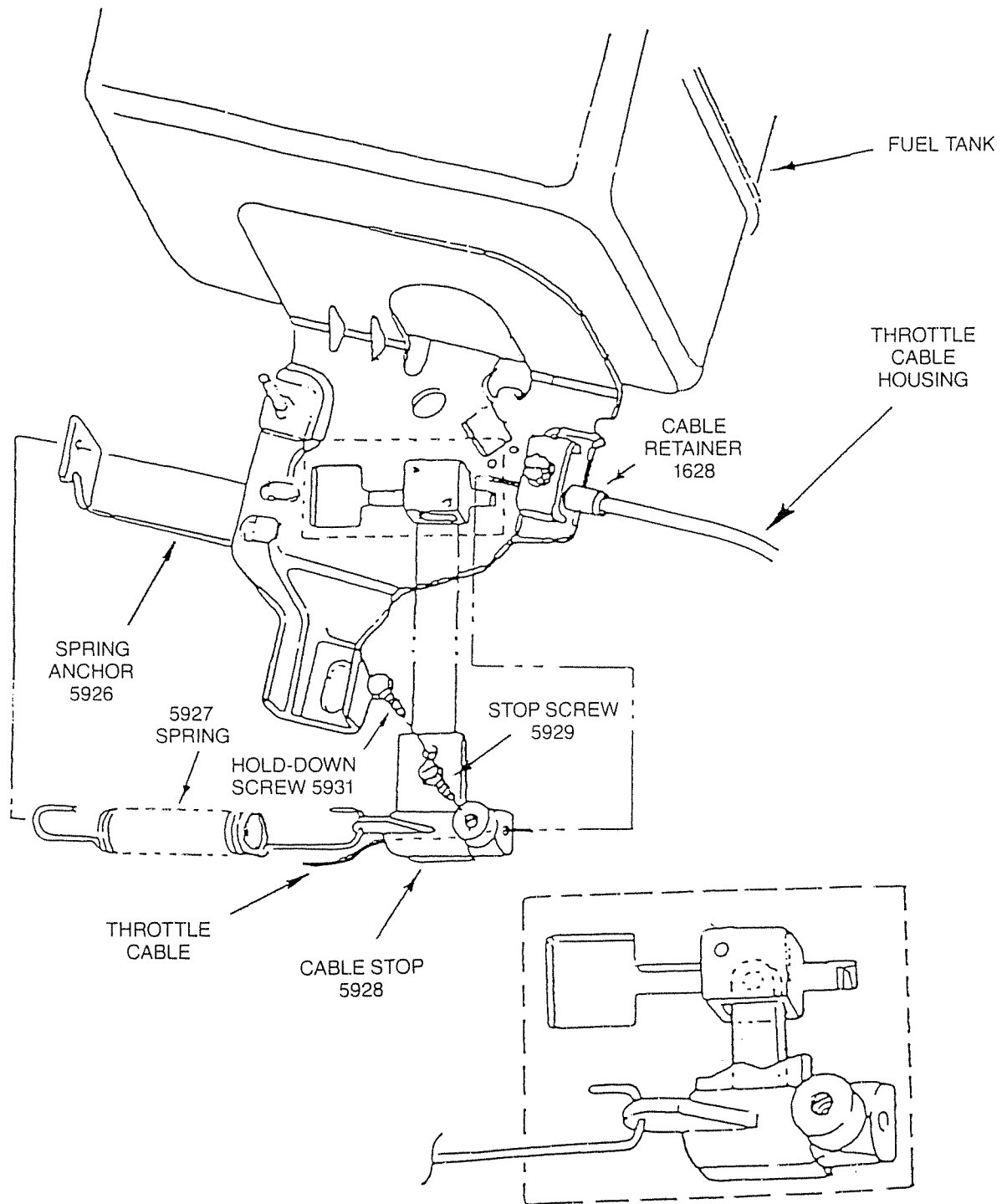


REF. NO.	PART NO.	DESCRIPTION
1	9809-19	Frame, Red
	9809-18	Frame, White
2	8049	Engine, 3.5hp
3	1194	Washer, 3/4ID x 1/8 Thick
4	1976	Seat
5	1943	Washer, 1-1/4OD x 9/32ID
ASM	4335	Clutch Assembly (incl. 6-10)
6	4496	Clutch Rotor
7	3146	Washer, Fiber
8	4491	Drum w/ Sprocket (incl. REF 9)
9	3143	Bushing
10	3141	Snap Ring
11	1115	Washer, 1/4 Split Lock
12	5733	Bolt, 1/4-28 x 3/4" Flange Whiz
13	3363-2	Bracket, Chain Guard
14	5135	Clip Nut
15	2832	Decal, No Passengers
16	1491	Bolt, 5/16-24 x 3/4"
17	9734	Chain Guard
18	6039	Washer, #10 Lock
19	6046	Screw, #10-24 x 1/2"
20	9186	Bolt, 5/16-18 x 1-1/2"
21	1046	Nut, 5/8-11 Toplock
ASM	2497	Front Wheel Assembly (incl. 22-28)
ASM	2247	Idle Wheel Asm (incl. 22-25,29-31)
ASM	4337	Drive Wheel Asm (incl. 22-25,29-37)
22	1093	Bearing
23	5839	Bolt, 1/4-20 x 3/4"
24	1186	Nut, 1/4-20
25	5949	Spanner
26	5158	Wheel Half, Front 4"
27	1053	Tube, Front 4"
28	2244	Tire, Front 4.10/3.50 x 4" Knobby
29	8004	Wheel Half, Rear 5" Untapped
30	1753	Tube, Rear 5"
31	2246	Tire, Rear 4.10/3.50 x 5" Knobby
32	8006	Wheel Half, Rear 5" Tapped
33	8008	Spacer
34	2388	Nut, 3/8-24
35	8007	Sprocket, #35 Chain x 60 Teeth
36	9030	Washer, 5/16 Lock
37	9127	Bolt, 5/16-18 x 2-1/4"
38	9788	Chain, #35 x 58 Pitch (incl. 40)
39	6073	Chain, #35 x 72 Pitch (incl. 40)
40	1269	Master Link, #35 Chain
41	9104	Washer, #10 Flat
42	9060	Washer, 5/16 Flat
ASM	9786	Speed Reducer (incl. 43-51 & 56)
43	9927	Jackshaft
44	5949	Spanner
45	9926-2	Chassis
46	5090	Bearing
47	9155	Nut, 5/8-11 Centerlock
48	6570	Sprocket, #35 Chain x 26 Teeth
49	3504	Sprocket, #35 Chain x 12 Teeth
50	1031	Key, 3/16 sq. x 1/2" long
51	1937	Spacer, 5/8 ID x 1/4" Thick
52	1264	Bolt, 1/2-13 x 3-1/2"

REF. NO.	PART NO.	DESCRIPTION
53	1012	Nut, 1/2-13 Toplock
54	8021	Spindle, Right Side
NI	8020	Spindle, Left Side
55	9085	Nut, 3/8-16 Toplock
56	1119	Spacer, 5/8ID x 1/8" Thick
ASM	4354	Tie Rod Assembly (incl. 57-59)
57	1414	Tie Rod End, Right Hand Thread
58	9092	Nut, 3/8-24 Jam, Right Hand Thread
59	4353	Tie Rod
60	3296	Decal, Steering Wheel Center
61	6621	Decal, Tire Pressure
62	6791	Decal, Oil Clutch
63	9091	Washer, 3/8 Flat
64	9145	Bolt, 3/8-16 x 1-3/4"
65	1390	Throttle Cable w/ Housing (incl. 66)
66	9058	Nut, 5/16-24 Jam
67	9123	Nut, 3/8-24 Toplock
68	9057	Nut, 1/4-20 Toplock
69	1389	Bushing
70	1437	Pedal, Throttle
71	1436	Pedal, Brake
72	1847	Bolt, 1/4-20 x 1"
73	9502	Spring, Left Wound
74	9110	Bolt, 5/16-18 x 1-3/4"
75	1189	Nut, 5/16-18 Toplock
76	9796	Screw, 12-24 x 1/2" Self Tapping
77	1854	Washer, #14 Flat
78	9503	Spring, Right Wound
79	1849	Bolt, 1/4-20 x 1-1/2"
80	5982-2	Brake Rod
81	9160	Bolt, 1/4-20 x 7/8"
82	5070	Spring
83	1982	Pedal Latch
84	1846	Bolt, 1/4-20 x 3/4"
85	4912	Decal, Warning
86	1049	Decal, Caution
87	1263	Nut, 5/16-18 Flange
88	1876	Bolt, 1/4-20 x 5/8"
89	9080	Bolt, 1/4-20 x 2-3/4"
90	6038	Steering Wheel
ASM	9799	Stop Switch Assembly (incl. 91-93)
91	1392	Stop Switch
92	1393	Ring Terminal
93	1394	Wire, 50" w/ Splice Connector
94	3135	Blade Terminal
95	4504	Decal, Yellow Warning
96	6220	Decal, Floor Pan (400-16 only)
97	9677	Decal, Warning: Hot Surfaces
98	9678	Decal, Warning: Engine Exhaust
99	5964	Decal, No Oil Warning
100	6237	Finger Guard, Recoil Housing
101	9916	Drain Plug, Square Head
102	9929	Rubber Cap
NI	1019	Ty-Wrap
NI	4350	Vehicle Operator's Manual
NI	2600	Engine Owner's Manual
NI	9245r1	Assembly Instructions

ASM = Assembly
NI = Not Illustrated

THROTTLE CABLE INSTALLATION



ASSEMBLY: Pass the throttle cable through the cable retainer and butt the throttle cable housing end against the inside shoulder of the cable retainer. (The cable retainer is to be securely fastened to the engine with the clamping screw.) Pass the end of the Throttle Cable through the hole in the cable stop. Before tightening cable stop screw:

1. Ensure spring anchor, spring, and cable are installed as illustrated above.
2. Ensure throttle pedal is in rearward (idle) position.
3. Ensure that there is no slack in the throttle cable with *no* tension applied to return spring.
4. Ensure cable housing is inside and against the cable retainer.