

Operator's Manual

SUPPLEMENT

Model No.

405B-0

⚠ WARNING:

Read Engine Owner's Manual, Vehicle Operator's Manual, and Supplement Carefully Before Operating Vehicle.

Parts List



ORDERING PARTS

1) Seek Part(s) from your models illustrated diagram, cross over REF# to PART#

2) Type PART# into sites [Search Box] at GoKartsRus.com TIP! - RIGHT CLICK LINK, SELECT OPEN IN NEW TAB

3) Add all needed parts to Shopping Cart | Complete "Checkout" | ✓ Done!

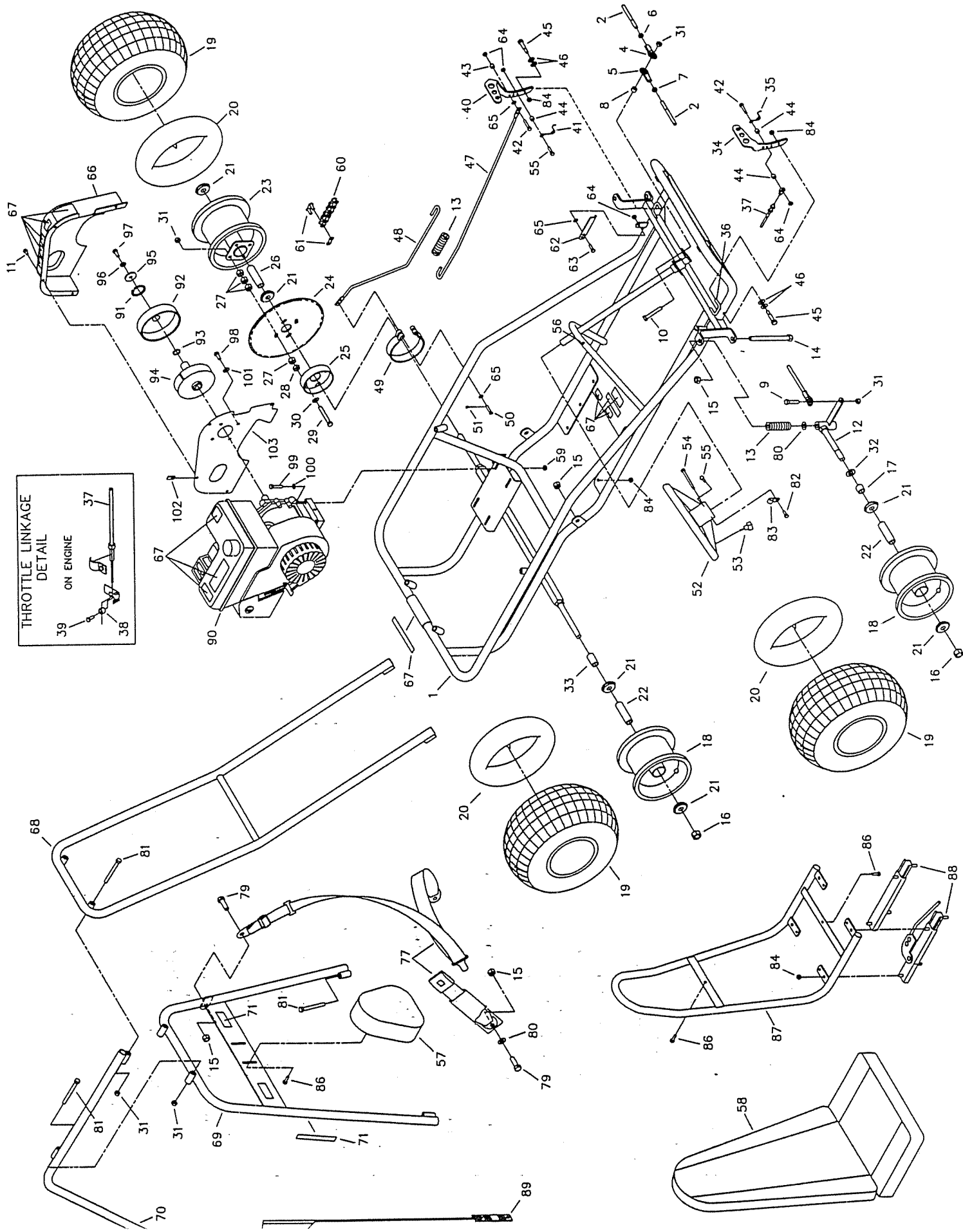
If a part does not come up in a Site Search, please [Contact Us](#) (include part# in email)

FAST & EASY!

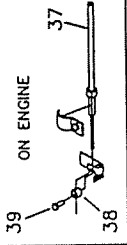
LOWEST PRICES!

THIS VEHICLE IS FOR OFF-ROAD USE ONLY

BEFORE OPERATING THIS VEHICLE, THE OWNER AND/OR OPERATOR MUST UNDERSTAND THE VEHICLE WAS NOT DESIGNED OR MANUFACTURED TO MEET SPECIFICATIONS FOR USE ON STREETS, HIGHWAYS, OR THOROUGHFARES AND HAVE READ AND HAVE AN UNDERSTANDING OF ALL THE INSTRUCTIONS FOR SAFE ASSEMBLY AND OPERATION AS WELL AS THE INSTRUCTIONS GOVERNING THE ENGINE AND OTHER PORTIONS OF THE VEHICLE.



THROTTLE LINKAGE
DETAIL
ON ENGINE



REF.	PN	DESCRIPTION	REF.	PN	DESCRIPTION	REF.	PN	DESCRIPTION
1	10524-5	FRAME WELDMENT, RED	39	2666	SWIVEL SCREW	80	9022	WASHER, 1/2 FLAT
ASM	10897	TIE ROD ASM (INCL. 2, 4-7)	40	6293-16	PEDAL, BRAKE TRIMMED	81	2386	BOLT, 3/8-16 X 3.50
2	10896	TIE ROD 10.25	41	9502	SPRING, PEDAL LEFT WOUND	82	5287	BOLT #10-16 X .375 SELF TAPPING
3	----		42	1848	BOLT, 1/4-20 X 1.25	83	5288	WIRE CLAMP
4	1415	TIE ROD END LH THREAD	43	6349	BUSHING, 5/16 OD X 22G	84	1189	NUT, 5/16-18 HEX TOPLOCK
5	1414	TIE ROD END RH THREAD	44	1389	BUSHING, 1/4 ID X .313	85	----	
6	9024	NUT, 3/8-24 JAM LH THREAD	45	1447	BOLT, 3/8 X 1-1/8 SHOULDER	86	5839	BOLT 1/4-20 X .75 HEX FLANGED WHIZ
7	9092	NUT, 3/8-24 JAM RH THREAD	46	9091	WASHER, FLAT 3/8 SAE N	87	9973-2	SEAT FRAME WELDMENT, BLACK
8	9674-16	SPACER, 3/8 ID X 3/8 LONG	47	9945-2	BRAKE ROD - FRONT BLACK	88	6734	SEAT SLIDE PR - SHORT
9	9146	BOLT, 3/8-16 X 1.50	48	9946-2	BRAKE ROD - REAR BLACK	89	8445	FLANGE SAFETY W/ BRKT 3FT
10	9158	BOLT, 3/8-16 X 2.25	49	1036	BRAKE BAND W/RETAINER	90	9661C	ENGINE 5HP TEC OHV
11	9006	BOLT, 1/4-20 X .50 HEX FLANGED WHIZ	50	9118	PIN, CLEVIS 1/4 X 1.250 Z	ASM	4335	CLUTCH .75ID 35 X 12 TEETH (INCL. 91-94)
NI	10548-2Z	SPINDLE WELDMENT LEFT BLACK	51	9116	PIN, COTTER 3/32 X .750 Z	91	3141	RETAINING RING
12	10549-2Z	SPINDLE WELDMENT RIGHT BLACK	52	6038	STEERING WHEEL	92	4491	DRUM/SPROCKET/BUSHING ASSEMBLY
13	9709	COMPRESSION SPRING	53	9799	STOP SWITCH WIRE ASM	93	3146	FIBER WASHER
14	5682	BOLT, 1/2-13 X 5.500	NI	1406	STOP SWITCH WIRE EXTENSION	94	4496	CLUTCH ROTOR (WEIGHT ASSEMBLY)
15	1012	NUT, 1/2-13 TOPLOCK	54	9080	BOLT, 1/4-20 X 2.750	95	1398	WASHER, 21/64 ID X 1 1/4 X 1/8
16	1046	NUT, 5/8-11 TOPLOCK	55	9160	BOLT, 1/4-20 X .875	96	1124	WASHER, 5/16 SPLIT LOCK
17	1104	SPACER SPLIT .8120D .625ID 1.000L	56	9796	BOLT, #12-24 X .500 SELF TAPPING	97	1491	BOLT, 5/16-24 X .750
18	9309FP	WHEEL ASSEMBLY, IDLE (INCL. 19-22)	57	6320	HEADREST PAD	98	9101	BOLT, 5/16-24 X .500 W/ NYLOK
ASM	10769	WHEEL ASSEMBLY, DRIVE (INCL. 20-21, 23-31)	58	4324	SEAT BACK/BOTTOM	99	9186	BOLT, 5/16-18 X 1.500
19	4915	TIRE 145/70 X 6" KNOBBY	59	1263	NUT 5/16-18 HEX FLANGED WHIZ	100	9030	WASHER, 5/16 INT/EXT LOCK
20	3802	INNER TUBE 6"	60	9978	CHAIN, 35 X 86P (INCL. 61)	101	9060	WASHER, 5/16 FLAT
21	5090	BEARING, 5/8" I.D.	61	1269	MASTERLINK 35 CHAIN	102	8227	NUT, 1/4-20 TINNERMAN
22	5950	SPANNER, 5/8" I.D. X 2-1/8"	62	1982-2	PEDAL LATCH, BLACK	103	10749-2	PLATE, COVER 415 BLACK
23	8499B	TIRE & DRIVE WHEEL ASSEMBLY 145/70 X 6"	63	1846	BOLT, 1/4-20 X .750	NI	8746M	VIDEO TAPE SAFETY MANCO
24	9986	SPROCKET 35P X 80 TEETH	64	9057	NUT, 1/4-20 TOPLOCK	NI	1019	CABLE TIE
25	1246-16	BRAKE DRUM, 4"	65	1854	WASHER, #14 FLAT MS Z	NI	4350	OPERATOR'S MANUAL
26	8598	SPANNER, 5/8 I.D. X 3.641	66	10750	COVER, 415 W&W/O SR			
27	8409	NUT, 1/2-20 HEX	67	11329	DECAL SHEET, ENGINE & MAIN FRAME WARNINGS			
28	9169	NUT, 1/2-20 HEX JAM	68	10536-2	OVERHEAD BAR WELDMENT BLACK			
29	9190	BOLT, 3/8-16 X 3-1/4	69	10543-2	CENTER BAR WELDMENT BLACK			
30	9091	WASHER, FLAT 3/8 SAE N	70	10541-2	REAR BAR WELDMENT BLACK			
31	9085	NUT, 3/8-16 TOPLOCK HEX	71	11330	DECAL SHEET, CENTER BAR WARNINGS			
32	1119	SPACER .625ID 1.0620D .125THK Z	72	-----				
33	2024-16	SPACER .875OD .625ID 1.500L Z	73	-----				
34	6309-16	PEDAL, THROTTLE TRIMMED	74	-----				
35	9503	SPRING, PEDAL RIGHT WOUND	75	-----				
36	9929	RUBBER CAP .25ID X .25 BLACK	76	-----				
37	8252	THROTTLE CABLE 61 INCH	77	8373	SEAT BELT - SHOULDER/LAP			
38	2748	CABLE STOP NUT	78	-----				
			79	9188	BOLT, 1/2-13 X 1.50			

ASM - ASSEMBLY
NI - NOT ILLUSTRATED