

Operator's Manual
SUPPLEMENT
Model No. 405X-1

⚠ WARNING:

Read Engine
Owner's Manual,
Vehicle Operator's
Manual, and
Supplement
Carefully Before
Operating Vehicle.

Parts List



ORDERING PARTS

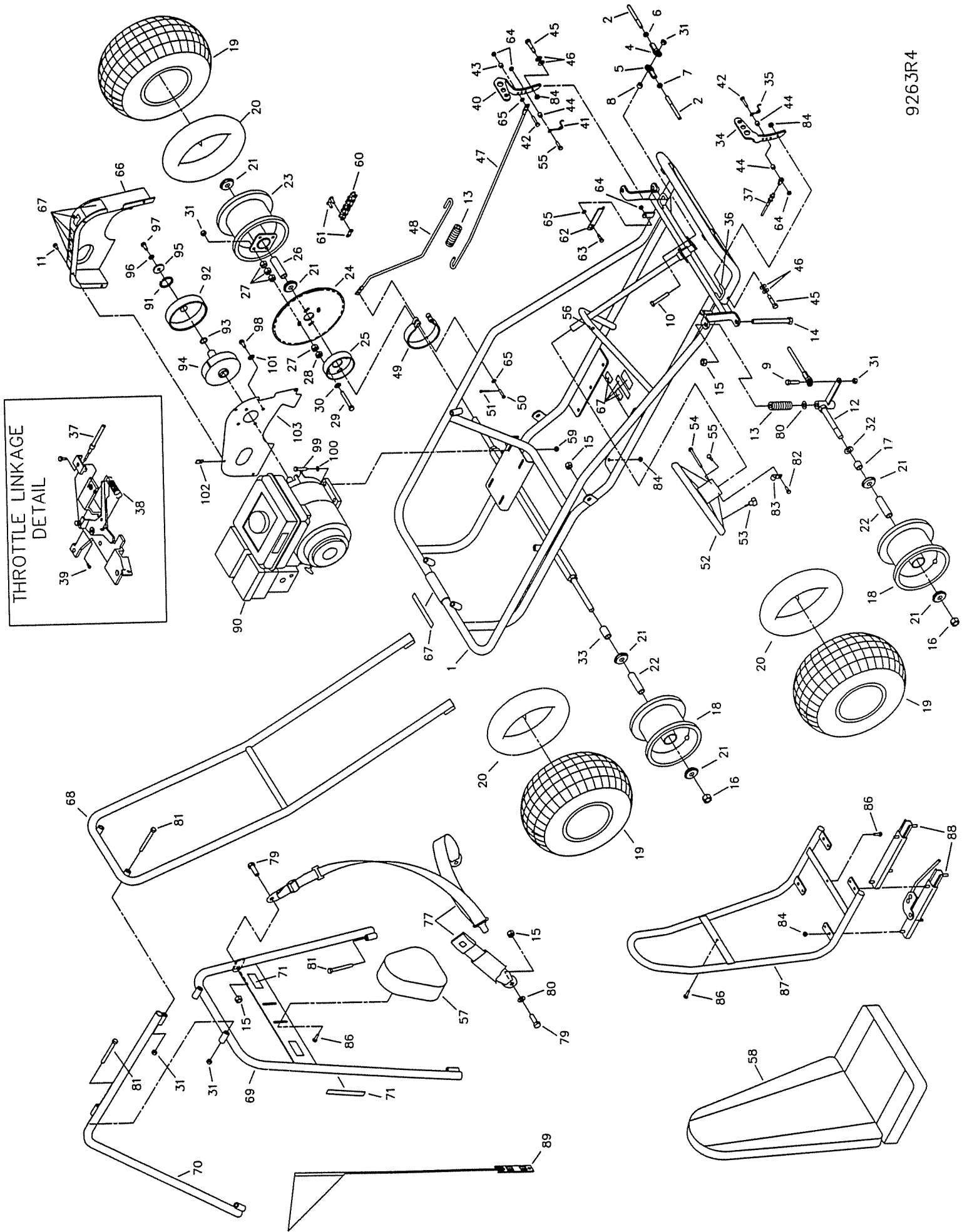
- FAST & EASY!**
- 1) Seek Part(s) from your models illustrated diagram, cross over REF# to PART#
 - 2) Type PART# into sites [Search Box] at GoKartsRus.com TIP! - RIGHT CLICK LINK, SELECT OPEN IN NEW TAB
 - 3) Add all needed parts to Shopping Cart | Complete "Checkout" | ✓ Done!
- LOWEST PRICES!**

If a part does not come up in a Site Search, please [Contact Us](#) (include part# in email)

**THIS VEHICLE IS FOR
OFF-ROAD USE ONLY**

BEFORE OPERATING THIS VEHICLE, THE OWNER AND/OR OPERATOR MUST UNDERSTAND THE VEHICLE WAS NOT DESIGNED OR MANUFACTURED TO MEET SPECIFICATIONS FOR USE ON STREETS, HIGHWAYS, OR THOROUGHFARES AND HAVE READ AND HAVE AN UNDERSTANDING OF ALL THE INSTRUCTIONS FOR SAFE ASSEMBLY AND OPERATION AS WELL AS THE INSTRUCTIONS GOVERNING THE ENGINE AND OTHER PORTIONS OF THE VEHICLE.

THROTTLE LINKAGE
DETAIL



PARTS LIST MODEL 405X-1

REF	PN	DESCRIPTION	DESCRIPTION
77	8373	SEAT BELT - SHOULDER/LAP	
78	-----		
79	9188	BOLT, 1/2-13 X 1.50	
80	9022	WASHER, 1/2 FLAT	
81	2386	BOLT, 3/8-16 X 3.50	
82	5287	BOLT #10-16 X .375 SELF TAPPING	
83	5288	WIRE CLAMP	
84	1189	NUT, 5/16-18 HEX TOPLOCK	
85	-----		
86	5839	BOLT 1/4-20 X .75 HEX FLANGED WHIZ	
87	11646-2	SEAT FRAME WELDMENT BLACK	
88	6734	SEAT SLIDE PR - SHORT	
89	8445	FLAG SAFETY W/ BRKT 3FT	
90	12247	ENGINE 5HP OHC	
ASM	4335	CLUTCH .75ID 35 X 12 TEETH (INCL. 91-94)	
91	3141	RETAINING RING	
92	4491	DRUM/SPROCKET/BUSHING ASSEMBLY	
93	3146	FIBER WASHER	
94	4496	CLUTCH ROTOR (WEIGHT ASSEMBLY)	
95	1398	WASHER, 21/64 ID X 1 1/4 X 1/8	
96	1124	WASHER, 5/16 SPLIT LOCK	
97	1491	BOLT, 5/16-24 X .750	
98	9101	BOLT, 5/16-24 X .500 W/ NYLOK	
99	9186	BOLT, 5/16-18 X 1.500	
100	9030	WASHER, 5/16 INT/EXT LOCK	
101	9060	WASHER, 5/16 FLAT	
102	8227	NUT, 1/4-20 TINNERMAN	
103	10749-2	PLATE, COVER 415 BLACK	
NI	8746M	VIDEO TAPE SAFETY MANCO	
NI	1019	CABLE TIE	
NI	11863	OWNERS/OPERATORS MANUAL - FUN KART	

ASM - ASSEMBLY
NI - NOT ILLUSTRATED

REF	PN	DESCRIPTION	DESCRIPTION
36	9929	RUBBER CAP .25ID X .25 BLACK	
37	8251	THROTTLE CABLE 70.875 INCH	
38	12348	RETURN SPRING	
39	12347	SWIVEL SCREW FOR ROBIN	
40	6293-16	PEDAL, BRAKE TRIMMED	
41	9502	SPRING, PEDAL LEFT WOUND	
42	1848	BOLT, 1/4-20 X 1.25	
43	6349	BUSHING, 5/16 OD X 22G	
44	1389	BUSHING, 1/4 ID X .313	
45	1447	BOLT, 3/8 X 1-1/8 SHOULDER	
46	9091	WASHER, FLAT 3/8 SAE N	
47	9945-2	BRAKE ROD - FRONT BLACK	
48	12257-2	BRAKE ROD - REAR BLACK	
49	1036	BRAKE BAND W/RETAINER	
50	9118	PIN, CLEVIS 1/4 X 1.250 Z	
51	9116	PIN, COTTER 3/32 X .750 Z	
52	6038	STEERING WHEEL	
53	9799	STOP SWITCH WIRE ASM	
NI	12273	WIRE HARNESS	
54	9080	BOLT, 1/4-20 X 2.750	
55	9160	BOLT, 1/4-20 X .875	
56	9796	BOLT, #12-24 X .500 SELF TAPPING	
57	6320	HEADREST PAD	
58	11636	SEAT - BACK/BOTTOM SGL BLK	
59	1263	NUT 5/16-18 HEX FLANGED WHIZ	
60	9978	CHAIN, 35 X 86P (INCL. 61)	
61	1269	MASTERLINK 35 CHAIN	
62	1982-2	PEDAL LATCH, BLACK	
63	1846	BOLT, 1/4-20 X .750	
64	9057	NUT, 1/4-20 TOPLOCK	
65	1854	WASHER, #14 FLAT MS Z	
66	10750	COVER, 415 W/&W/O SR	
67	11329	DECAL SHEET, ENGINE & MAIN FRAME WARNINGS	
68	10536-2	OVERHEAD BAR WELDMENT BLACK	
69	10543-2	CENTER BAR WELDMENT BLACK	
70	10541-2	REAR BAR WELDMENT BLACK	
71	11330	DECAL SHEET, CENTER BAR WARNINGS	
72	-----		
73	-----		
74	-----		
75	-----		
76	-----		

REF	PN	DESCRIPTION	DESCRIPTION
1	12275-5	FRAME WELDMENT, RED	
ASM	10897	TIE ROD ASM (INCL. 2, 4-7)	
2	10896	TIE ROD 10.25	
3	-----		
4	1415	TIE ROD END LH THREAD	
5	1414	TIE ROD END RH THREAD	
6	9024	NUT, 3/8-24 JAM LH THREAD	
7	9092	NUT, 3/8-24 JAM RH THREAD	
8	9674-16	SPACER, 3/8 ID X 3/8 LONG	
9	9146	BOLT, 3/8-16 X 1.50	
10	9158	BOLT, 3/8-16 X 2.25	
11	9006	BOLT, 1/4-20 X .50 HEX FLANGED WHIZ	
NI	10548-2Z	SPINDLE WELDMENT LEFT BLACK	
12	10549-2Z	SPINDLE WELDMENT RIGHT BLACK	
13	9709	COMPRESSION SPRING	
14	5682	BOLT, 1/2-13 X 5.500	
15	1012	NUT, 1/2-13 TOPLOCK	
16	1046	NUT, 5/8-11 TOPLOCK	
17	1104	SPACER SPLIT .8120D .625ID 1.000L	
18	9309FP	WHEEL ASSEMBLY, IDLE (INCL. 19-22)	
ASM	10769	WHEEL ASSEMBLY, DRIVE (INCL. 20-21, 23-31)	
19	4915	TIRE 145/70 X 6" KNOBBY	
20	3802	INNER TUBE 6"	
21	5090	BEARING, 5/8" I.D.	
22	5950	SPANNER, 5/8" I.D. X 2-1/8"	
23	8499B	TIRE & DRIVE WHEEL ASSEMBLY 145/70 X 6"	
24	9986	SPROCKET 35P X 80 TEETH	
25	1246-16	BRAKE DRUM, 4"	
26	8598	SPANNER, 5/8 I.D. X 3.641	
27	8409	NUT, 1/2-20 HEX	
28	9169	NUT, 1/2-20 HEX JAM	
29	9190	BOLT, 3/8-16 X 3-1/4	
30	9091	WASHER, FLAT 3/8 SAE N	
31	9085	NUT, 3/8-16 TOPLOCK HEX	
32	1119	SPACER .625ID 1.0620D .125THK Z	
33	2024-16	SPACER .875OD .625ID 1.500L Z	
34	6309-16	PEDAL, THROTTLE TRIMMED	
35	9503	SPRING, PEDAL RIGHT WOUND	