

# Operator's Manual SUPPLEMENT

MANCO MODEL NO.

445-15

445-152

**WARNING:**  
Read Engine  
Owner's Manual,  
Vehicle Operator's  
Manual, and  
Supplement  
Carefully Before  
Operating  
Vehicle.

Parts List



## ORDERING PARTS

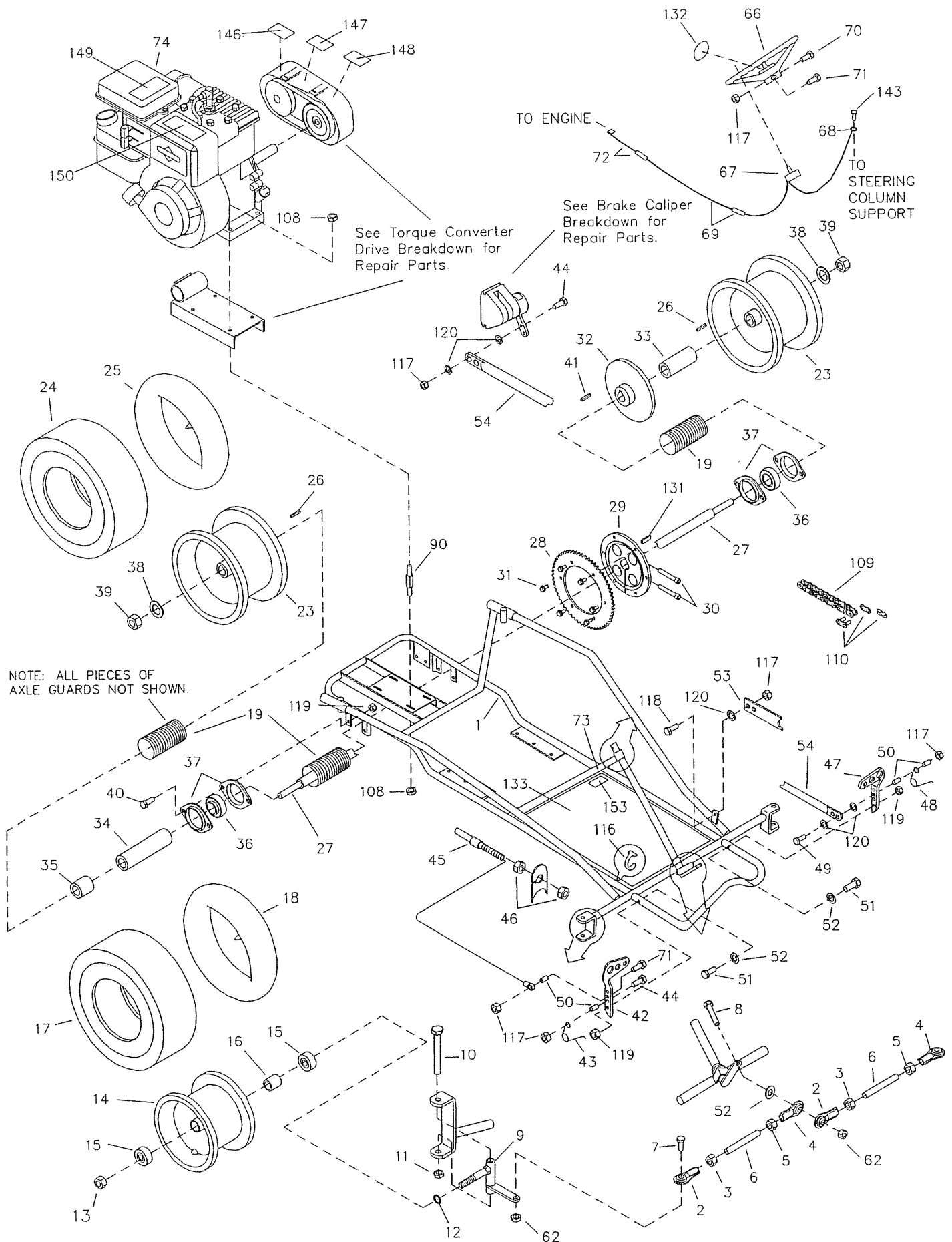
FAST & EASY!

LOWEST PRICE!

- 1) Seek Part(s) from your models illustrated diagram, cross over REF# to PART#
- 2) Type PART# into sites [Search Box] at [GoKartsRus.com](http://GoKartsRus.com) TIP! - RIGHT CLICK LINK, SELECT OPEN IN NEW TAB
- 3) Add all needed parts to Shopping Cart | Complete "Checkout" | ✓ Done!

*If a part does not come up in a Site Search, please [Contact Us](#) (include part# in email)*

BEFORE OPERATING THIS VEHICLE, THE OWNER AND/OR OPERATOR MUST UNDERSTAND THE VEHICLE WAS NOT DESIGNED OR MANUFACTURED TO MEET SPECIFICATIONS FOR USE ON PUBLIC ROADS, STREETS, HIGHWAYS, OR THOROUGHFARES AND HAVE READ AND HAVE AN UNDERSTANDING OF ALL THE INSTRUCTIONS FOR SAFE ASSEMBLY AND OPERATION AS WELL AS THE INSTRUCTIONS GOVERNING THE ENGINE AND OTHER PORTIONS OF THE VEHICLE.



See Torque Converter Drive Breakdown for Repair Parts.

See Brake Caliper Breakdown for Repair Parts.

NOTE: ALL PIECES OF AXLE GUARDS NOT SHOWN.

TO ENGINE

TO STEERING COLUMN SUPPORT

## REPAIR PARTS - MODEL 445-15/-152

REF. NO.	REF. NO.	DESCRIPTION	REF. NO.	REF. NO.	DESCRIPTION
1	8176-2	Frame	50	1389	Bushing, 1/4ID x 5/16"
ASM	4355	Tie Rod Asm. (incl. 2-6)	51	9110	Bolt, 5/16-18 x 1-1/2"
2	1414	Tie Rod End, RH Thread	52	9091	Washer, 3/8" Flat
3	9092	Nut, 3/8-24 Jam RH	53	1982	Pedal Latch
4	1415	Tie Rod End, LH Thread	54	9599-2	Brake Rod
5	9024	Nut, 3/8-24 Jam LH	ASM	9598	Brake Caliper (incl. 55-65)
6	4352	Tie Rod	ASM	9810	Brake Pad Service Kit (incl. 55-57)
7	9146	Bolt, 3/8-16 x 1-1/2"	55	**	Anvil w/Lining
8	9145	Bolt, 3/8-16 x 1-3/4"	56	**	Brake Lining
NI	6256-2	Spindle, LH	57	3928	Backing Plate
9	6257-2	Spindle, RH	58	3930	Actuator Pin
10	1264	Bolt, 1/2-13 x 3-1/2"	59	3931	Adjuster Pin
11	1012	Nut, 1/2-13 Toplock	60	3932	Nut, Jam
12	5157	Spacer, 5/8ID x 3/4"	61	9158	Bolt, 3/8-16 x 2-1/4"
13	1046	Nut, 5/8-11 Toplock	62	9085	Nut, 3/8-16 Toplock
14	9309FP	Wheel Asm, Front (incl. 15-18)	ASM	6534	MB-1 Service Kit (incl. 63-65)
15	5090	Bearing, 5/8" ID	63	**	Groove Pin
16	5950	Spanner, 5/8ID x 2-1/8"	64	**	Lever
17	4915	Tire, 145/70 x 6" Knobby	65	**	Brake Housing
18	3802	Tube, 6"	66	6038	Steering Wheel
19	K445-13	Axle Guard Repair Kit	ASM	9799	Stop Switch Assembly (incl. 67 - 69)
20	1628	Throttle Cable Retainer	67	1392	Switch, Toggle
21	1018	Throttle Cable Stop	68	1393	Ring Terminal
22	-----	-----	69	1394	Wire, 50" w/ Splice Conn.
ASM	6289P	Wheel Asm., Rear (incl. 23-24)	70	9080	Bolt, 1/4-20 x 2-3/4"
23	9606	Rim, 7" Black	71	9160	Bolt, 1/4-20 x 7/8"
24	9607	Tire, 16 x 8 - 7"	72	1406	Wiring Harness
25	9609	Tube, 16 x 8 - 7" (Repair Part Only)	73	1463	Bushing, Insulating
26	6123	Key, 1/4 sq. x 1-3/4"	74	6010	Engine, 5hp, 445-15
27	9693	Axle Shaft		9890	Engine, 5hp, 445-152
ASM	9570	Sprocket Asm. (incl. 28-31)	ASM	5957	Pulley, Driver (incl. 75-80)
28	9338	Sprocket, 420P 60T	75	**	Drum
29	6280	Sprocket Hub	76	**	Hub
30	6701	Bolt, 5/16-18 x 1"	77	**	Shoe Assembly
31	1876	Bolt, 1/4-20 x 5/8"	78	**	Moveable Sheave
32	9511	Brake Disc, 6"	79	200349	Bushing
33	4913	Spacer, 1" ID x 3"	80	**	Stationary Sheave
34	1448	Spacer, 1" ID x 3-9/16"	ASM	5958	Pulley, Driven (incl. 81-87)
35	2265	Spacer, 1" ID x 3/4"	81	**	Stationary Sheave
36	3941	Bearing	82	**	Bushing
37	1760	Bearing Flange	83	**	Moveable Sheave
38	1194	Washer, 3/4" Flat	84	6804	Button, Nylon
39	9162	Nut, 3/4-10 Toplock	85	6805	Spring
40	2264	Bolt, 5/16-18 x 3/4"	86	**	Cam
41	1775	Key, 1/4sq. x 1-1/4"	87	2477	Retaining Ring
42	1437	Pedal, Throttle	88	5959	Belt
43	9502	Spring, Left Wound	89	9030	Washer, 5/16 Interlock
44	1847	Bolt, 1/4-20 x 1"	90	1356	Stud
45	1390	Cable, Throttle (incl. 46)	91	1136	Nut, 5/8-16 Toplock
46	9058	Nut, 5/16-24 Jam	92	1494	Mounting Bracket
47	1436	Pedal, Brake	93	9101	Bolt, 5/16-24 x 1/2" Nylock
48	9503	Spring, Right Wound	94	1454	Bolt, 5/16-24 x 1-3/4"
49	1849	Bolt, 1/4-20 x 1-1/2"	95	1124	Washer, 5/16" Split Lock

## REPAIR PARTS - MODEL 445-15/-152

REF. NO.	REF. NO.	DESCRIPTION	REF. NO.	REF. NO.	DESCRIPTION
96	1398	Washer, 21/64" ID x 1-1/4"	131	9680	Key, 1/4 x 3/8 x 1-1/4"
97	1938	Spacer, 3/4ID x 3/8"	132	6592	Decal, Steering Wheel Center
98	1110	Chassis, Torque Converter	133	6596	Decal, Pan
99	1116	Spanner, 5/8ID x 4-13/16"	134	6594	Decal, Torque Converter Cover
100	5090	Bearing, 5/8ID	135	9778	Arm Pad Cover
101	1118	Jackshaft	136	9779	Top Pad Cover
102	1031	Key, 3/16 sq. x 1/2"	ASM	9798*	Replacement Foam Kit (incl. 137- 141)
103	1469	Washer, 5/8ID x 1" OD	137	9759*	Foam, Side Bar, 30"
104	1937	Spacer, 5/8ID x 1/4"	138	9758*	Foam, Front Bar, 43"
105	1119	Spacer, 5/8ID x 1/8"	139	9763*	Foam, Top Center, 16"
106	3403	Key, 3/16 sq. x 2"	140	9764*	Foam, Middle Center, 15"
107	1125s	Sprocket, #420, 9T	141	9765*	Foam, Bottom Center, 14"
108	1263	Nut, 5/16-18 Whiz Flange	142	9776	Clamp, Foam Stop 3/4"
109	9515	Chain, #420 x 64P (incl. 110)	143	9796	Screw, 12-24 x 1/2" Self Tapping
110	2037	Masterlink, #420	144	-----	-----
111	1542	Cover, Torque Converter.	145	6540	Decal, Warning: Wear Helmet
112	1537-2	Rear Mounting Bracket	146	1049	Decal, Caution
113	2277	Bolt, 8-32 x 1/2"	147	4912	Decal, Chain Guard Warning
114	2278	Nut, 8-32 Toplock	148	6626	Decal, Tire Pressure
115	2279	Washer, #8 Flat	149	9677	Decal, Warning: Hot Surfaces
116	1019	Ty-Wrap	150	9678	Decal, Warning: Engine Exhaust
117	9057	Nut, 1/4-20 Toplock	151	9679	Decal, No Riders Allowed
118	1846	Bolt, 1/4-20 x 3/4"	152	8138	Decal, Warning: Entanglement
119	1189	Nut, 5/16-18 Toplock	153	8154	Decal, Age Restriction
120	1854	Washer, #14 Flat	154	9990	Carriage Bolt, 5/16-18 x .625, Rd. Head
121	6584	Seat Pad	155	9989	Washer, Retaining
122	9973-2	Seat Frame	156	6734	Seat Slide Pair
123	9006	Bolt, 1/4-20 x 1/2"	NI	2601	Engine Operator's Manual, 445-15
124	9540-2	Front Bar	NI	2684C	Engine Operator's Manual, 445-152
125	6452	Bolt, 3/8-16 x 5"	NI	4350	Operator's Manual
126	9547-2	Center Bar	NI	9212R4	Assembly Instructions
127	9549-2	Rear Upright	NI	5964	Decal, Oil Warning
128	6585	Headrest Pad			
129	2386	Bolt, 3/8-16 x 3-1/2"			
130	9554-2	Rear Bar			

ASM = Assembly

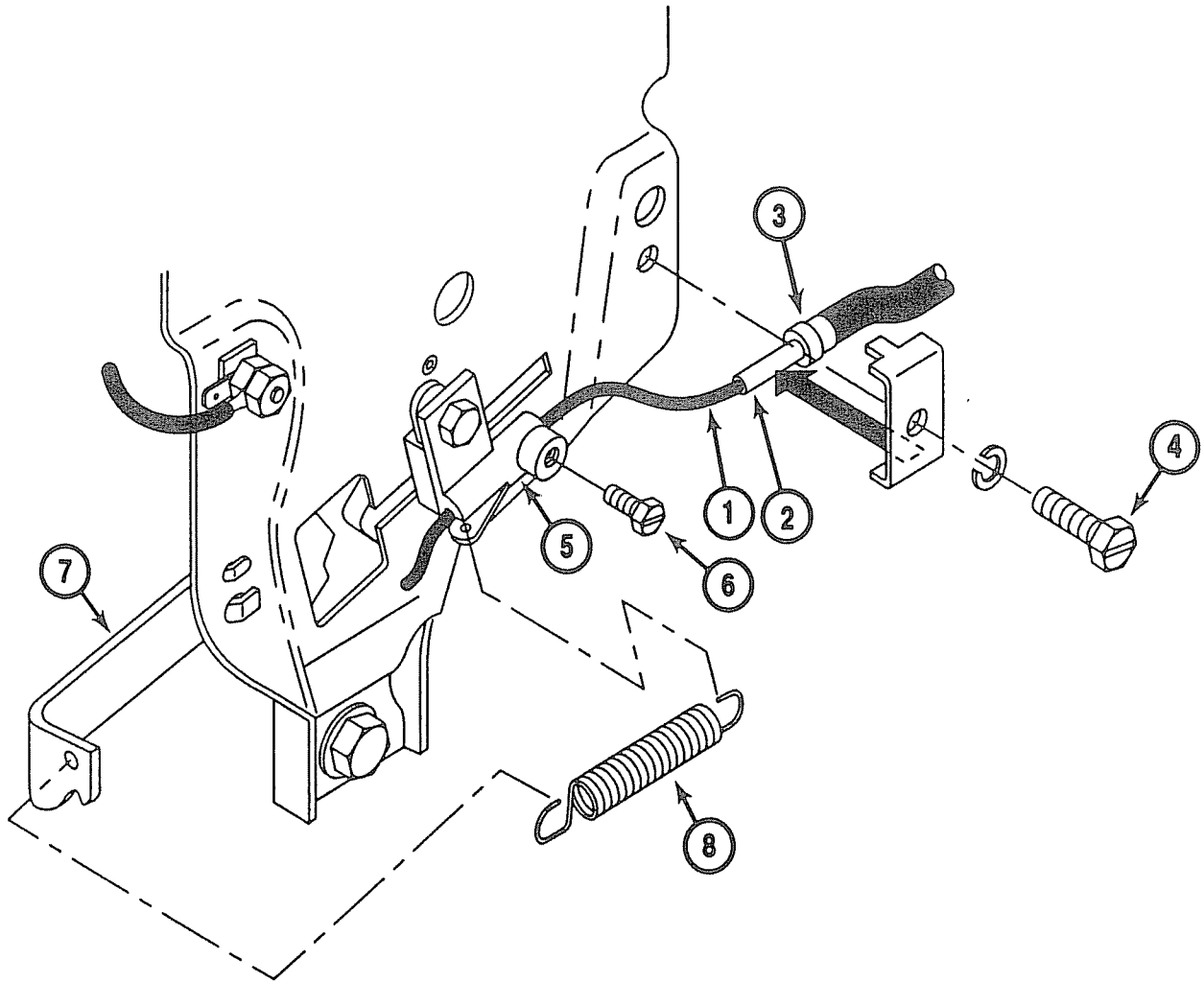
NI = Not Illustrated

\* = Specify Black, Pink, White, or Yellow

\*\* = Not Sold Separately



# THROTTLE CABLE INSTALLATION



(Model 445-15 Only)

**ASSEMBLY:** Pass the Throttle Cable (Item 1) through the 1628 Cable Retainer (Item 2) and butt the Throttle Cable Housing End (Item 3) against the Inside Shoulder of the 1628 Cable Retainer (Item 2). The 1628 Cable Retainer (Item 2) is to be securely fastened to the engine with the Clamping Screw (Item 4). Pass the Wire End of the Throttle Cable Housing (Item 1) through the hole in the 5928 Cable Stop (Item 5). Before tightening 5929 Cable Stop Screw (Item 6):

1. Ensure 5926 Spring Anchor (Item 7), 5927 Spring (Item 8) and Throttle Cable are installed as illustrated above.
2. Ensure throttle pedal is in rearward (idle) position.
3. Ensure that there is no slack in the Throttle Cable Wire End (Item 1) with no tension applied to the spring (Item 8).
4. Ensure Throttle Cable Housing End (Item 3) is inside and against the 1628 Cable Retainer (Item 2).