

# Operator's Manual SUPPLEMENT

MANCO MODEL NO.

475-11

475-112

**WARNING:**  
Read Engine  
Owner's Manual,  
Vehicle Operator's  
Manual, and  
Supplement  
Carefully Before  
Operating  
Vehicle.

Parts List



## ORDERING PARTS

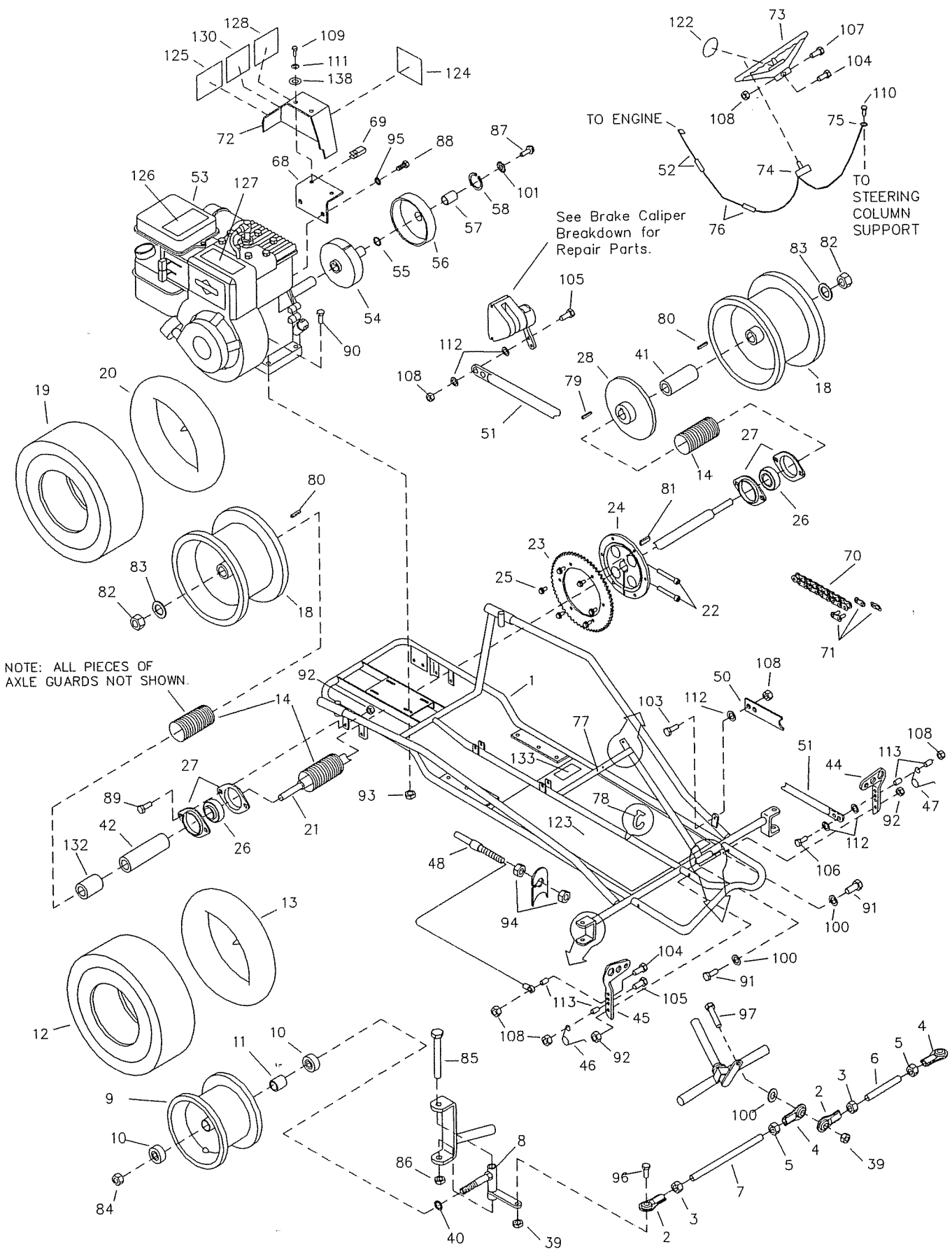
FAST & EASY!

- 1) Seek Part(s) from your models illustrated diagram, cross over REF# to PART#
- 2) Type PART# into sites [Search Box] at [GoKartsRus.com](http://GoKartsRus.com) TIP! - RIGHT CLICK LINK, SELECT OPEN IN NEW TAB
- 3) Add all needed parts to Shopping Cart | Complete "Checkout" | ✓ Done!

If a part does not come up in a Site Search, please [Contact Us](#) (include part# in email)

LOWEST PRICES!

BEFORE OPERATING THIS VEHICLE, THE OWNER AND/OR OPERATOR MUST UNDERSTAND THE VEHICLE WAS NOT DESIGNED OR MANUFACTURED TO MEET SPECIFICATIONS FOR USE ON PUBLIC ROADS, STREETS, HIGHWAYS, OR THOROUGHFARES AND HAVE READ AND HAVE AN UNDERSTANDING OF ALL THE INSTRUCTIONS FOR SAFE ASSEMBLY AND OPERATION AS WELL AS THE INSTRUCTIONS GOVERNING THE ENGINE AND OTHER PORTIONS OF THE VEHICLE.

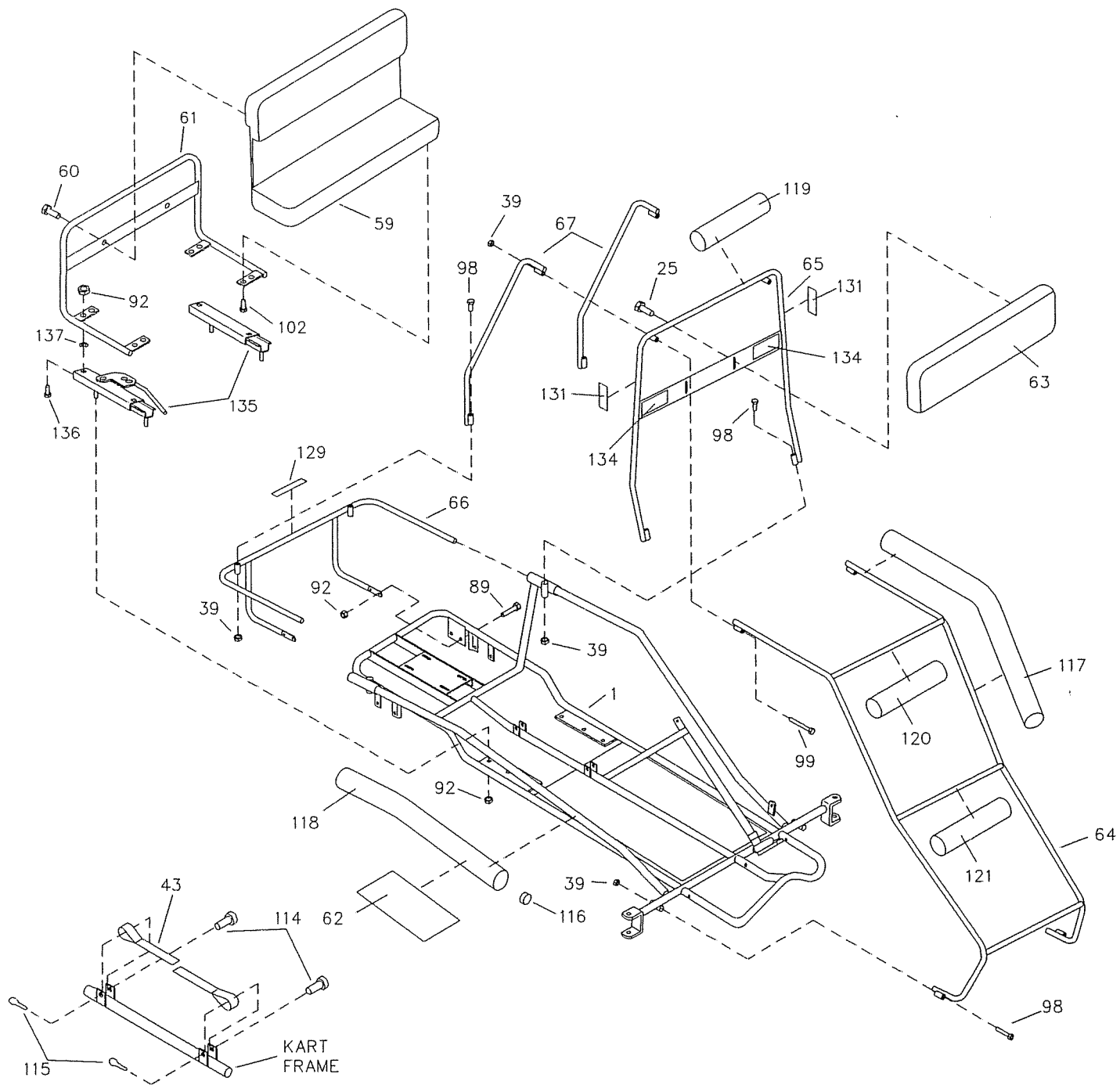


NOTE: ALL PIECES OF AXLE GUARDS NOT SHOWN.

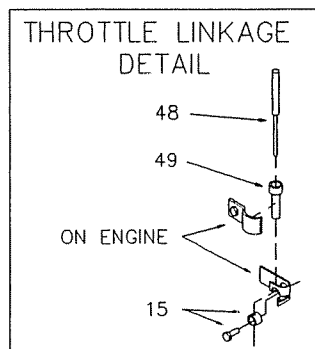
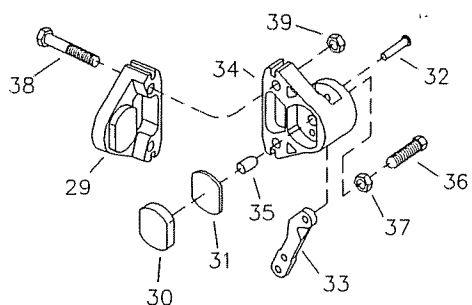
See Brake Caliper Breakdown for Repair Parts.

TO ENGINE

TO STEERING COLUMN SUPPORT



### Brake Caliper Breakdown



MODEL 475-112 ONLY

REPAIR PARTS 475-11/112

REF. NO.	PART NO.	DESCRIPTION	REF. NO.	PART NO.	DESCRIPTION
	1	8175-2	50	1982	Pedal Latch
<b>ASM</b>	4358	Tie Rod Asm. Short (incl. 2-6)	51	9599-2	Brake Rod
<b>ASM</b>	9322	Tie Rod Asm. Long (incl. 2-5, 7)	52	1406	Wiring Harness
	2	1414	53	6010	Engine, 5hp 475-11
	3	9092		9890	Engine, 5hp 475-112
	4	1415	<b>ASM</b>	4195	Clutch Asm (incl. 54-58) 475-11
	5	9024	<b>ASM</b>	4335	Clutch Asm (incl. 54-58) 475-112
	6	4356	54	4496	Clutch Rotor
	7	9321	55	3146	Washer, Fiber
<b>NI</b>	6256-2	Spindle, Left	56	9781	Drum w/ Sprocket (incl. 57)
	8	6257-2	57	3143	Bushing
	9	9309FP	58	3141	Snap Ring
	10	5090	59	8134	Seat Pad, Back/Bottom
	11	5950	60	9006	Bolt, 1/4-20 x 1/2" Whiz Flange
	12	4915	61	9968-2	Seat Frame
	13	3802	62	9800	Arm Pad Cover
	14	K475-11	63	6217	Headrest Pad
	15	1018	64	9539-2	Front Bar
	16	-----	65	9546-2	Center Bar
	17	-----	66	9553-2	Rear Bar
<b>ASM</b>	6289P	Wheel Asm, Rear (incl. 18-20)	67	9549-2	Rear Upright Bar
	18	9606	68	3363-2	Bracket, Chain Guard
	19	9607	69	5135	Nut, Tinnerman
	20	9609	70	2920	Chain, #420 x 77 Pitch
	21	9323	71	2037	Master Link, #420
<b>ASM</b>	9571	Sprocket Asm, (incl. 22-25)	72	9699	Chain Guard
	22	6701	<b>ASM</b>	1694	Steering Wheel Asm (incl. 73-76)
	23	8105	73	6038	Steering Wheel
	24	6280	<b>ASM</b>	9799	Stop Switch Assembly (inc. 74-76)
	25	1876	74	1392	Switch, Toggle
	26	3941	75	1393	Terminal, Ring
	27	1760	76	1394	Wire, 50" w/ Splice Connector
	28	9511	77	1463	Bushing, Insulating
<b>ASM</b>	9598	Brake Caliper (incl. 29-39)	78	1019	Ty-Wrap
<b>ASM</b>	9810	Brake Pad Service Kit (incl. 29-31)	79	1775	Key, 1/4" x 1/4" x 1-1/4"
<b>ASM</b>	6534	MB-1 Service Kit (incl. 32-34)	80	6123	Key, 1/4" x 1/4" x 1-3/4"
	29	*	81	9680	Key, 1/4" x 3/8" x 1-1/4"
	30	*	82	9162	Nut, 3/4-10 Toplock
	31	*	83	1194	Washer, 3/4" Flat
	32	*	84	1046	Nut, 5/8-11 Toplock
	33	*	85	1264	Bolt, 1/2-13 x 3-1/2"
	34	*	86	1012	Nut, 1/2-13 Toplock
	35	3930	87	1491	Bolt, 5/16-24 X 3/4"
	36	3931	88	9101	Bolt, 5/16-18 x 1/2"
	37	3932	89	2264	Bolt, 5/16-18 x 3/4"
	38	9158	90	9186	Bolt, 5/16-18 x 1-1/2"
	39	9085	91	9110	Bolt, 5/16-18 x 1-1/2", 7/8" Shoulder
	40	5157	92	1189	Nut, 5/16-18 Toplock
	41	4913	93	1263	Nut, 5/16-18 Whiz Flange
	42	1448	94	9058	Nut, 5/16-24 Jam
	43	4372	95	9030	Washer, 5/16 Interlock
	44	1436	96	9146	Bolt, 3/8-16 x 1-1/2"
	45	1437	97	9145	Bolt, 3/8-16 x 1-3/4"
	46	9502	98	2386	Bolt, 3/8-16 x 3-1/2"
	47	9503	99	6452	Bolt, 3/8-16 x 5"
	48	1496	100	9091	Washer, 3/8 Flat
	49	1628	101	9001	Washer, 3/8 Int/Ext Lock
			102	9189	Bolt, 1/4-20 x 7/8" Whiz Flange

## REPAIR PARTS 475-11/112

REF. <u>NO.</u>	PART <u>NO.</u>	<u>DESCRIPTION</u>	REF. <u>NO.</u>	PART <u>NO.</u>	<u>DESCRIPTION</u>
103	1846	Bolt, 1/4-20 x 3/4"	126	9677	Decal, Warning Hot Surfaces
104	9160	Bolt, 1/4-20 x 7/8" w/ Nylock	127	9678	Decal, Warning Engine Exhaust
105	1847	Bolt, 1/4-20 x 1"	128	4912	Decal, Warning Chain Guard
106	1849	Bolt, 1/4-20 x 1-1/2"	129	9679	Decal, Warning No Riders Allowed
107	9080	Bolt, 1/4-20 x 2-3/4"	130	1049	Decal, Caution Drive Cover
108	9057	Nut, 1/4-20 Toplock	131	6540	Decal, Helmet Warning
109	6046	Bolt, 10-24 x 1/2"	132	2265	Spacer, 1"ID x 3/4"
110	9796	Bolt, 12-24 x 1/2" Self Tapping	133	8154	Decal, Age Restriction
111	6039	Washer, No. 10 Inter Lock	134	8138	Decal, Warning: Entanglement
112	1854	Washer, No. 14 Flat	135	6734	Seat Slide Pair
113	1389	Bushing, 1/4" ID x 5/16"	136	9990	Carriage Bolt, 5/16-18 x .625, Rd. Head
114	9118	Clevis Pin	137	9989	Washer, Retaining
115	9116	Cotter Pin	138	9104	Washer, No. 10 Flat
116	9776	Clamp, 3/4" ID	NI	5964	Decal, Warning Kart Shipped w/o Oil
<b>ASM</b>	9798**	Foam Replacement Kit (incl. 117-121)	NI	2601	Engine Owner's Manual 475-11
117	9758**	Foam, 43"	NI	2684C	Engine Owner's Manual 475-112
118	9759**	Foam, 30"	NI	4350	Vehicle Operator's Manual
119	9760**	Foam, 22"	NI	9212r4	Vehicle Assembly Instructions
120	9761**	Foam, 21"			
121	9762**	Foam, 20"			
122	3296	Decal, Steering Wheel Center			
123	4341	Decal, Floor Pan			
124	6791	Decal, Oil Clutch Here			
125	9610	Decal, Tire Pressure			

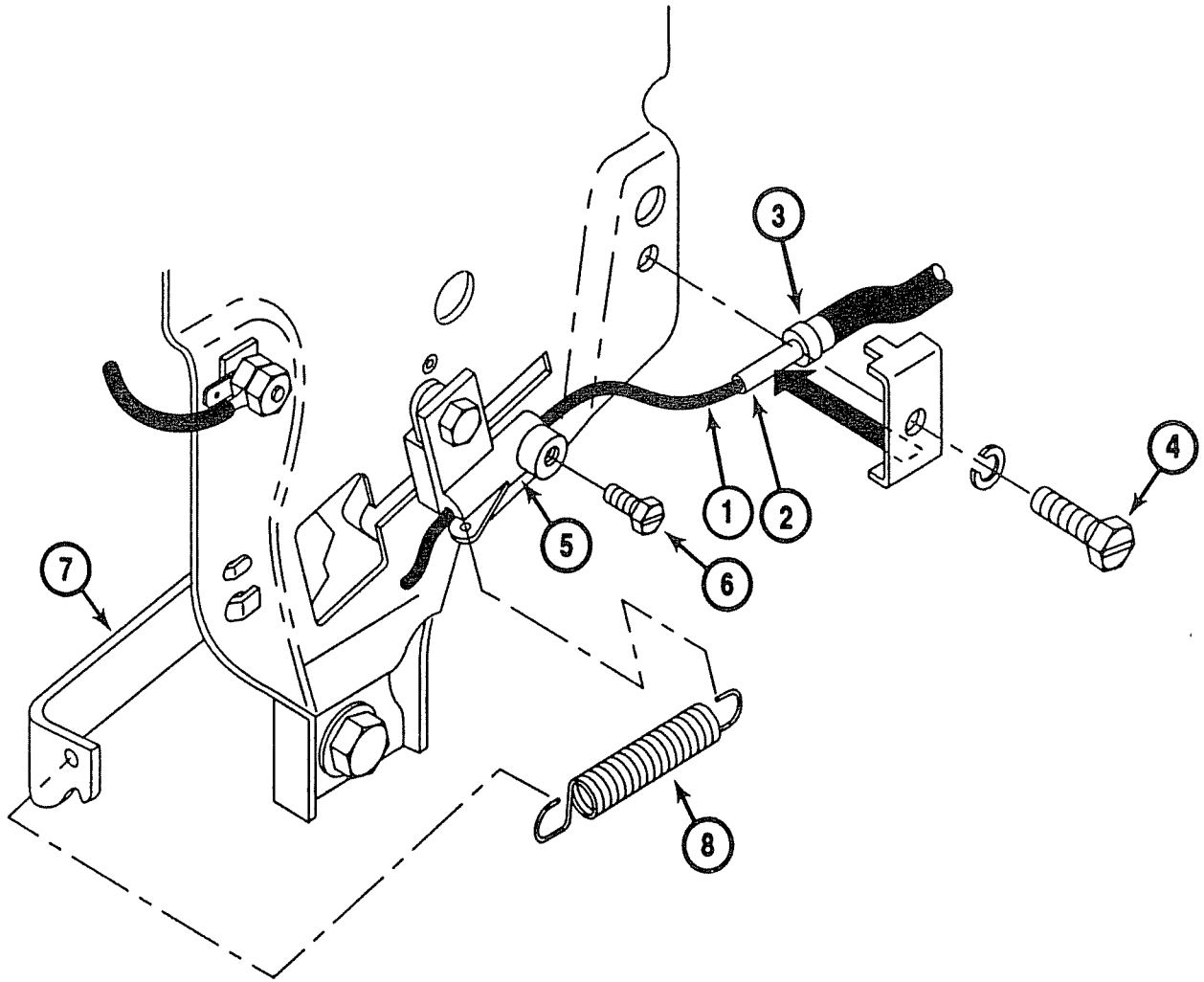
**ASM** = Assembly

**NI** = Not Illustrated.

\* = Not Available Separately.

\*\* = Specify Black, Pink, White, Yellow.

# THROTTLE CABLE INSTALLATION



(Model 475-11 Only)

**ASSEMBLY:** Pass the Throttle Cable (Item 1) through the 1628 Cable Retainer (Item 2) and butt the Throttle Cable Housing End (Item 3) against the Inside Shoulder of the 1628 Cable Retainer (Item 2). The 1628 Cable Retainer (Item 2) is to be securely fastened to the engine with the Clamping Screw (Item 4). Pass the Wire End of the Throttle Cable Housing (Item 1) through the hole in the 5928 Cable Stop (Item 5). Before tightening 5929 Cable Stop Screw (Item 6):

1. Ensure 5926 Spring Anchor (Item 7), 5927 Spring (Item 8) and Throttle Cable are installed as illustrated above.
2. Ensure throttle pedal is in rearward (idle) position.
3. Ensure that there is no slack in the Throttle Cable Wire End (Item 1) with no tension applied to the spring (Item 8).
4. Ensure Throttle Cable Housing End (Item 3) is inside and against the 1628 Cable Retainer (Item 2).