

# Operator's Manual

## SUPPLEMENT

Model No. 495B

### ⚠ WARNING:

Read Engine Owner's Manual, Vehicle Operator's Manual, and Supplement Carefully Before Operating Vehicle.

Parts List



### ORDERING PARTS

FAST & EASY!

- 1) Seek Part(s) from your models illustrated diagram, cross over REF# to PART#
- 2) Type PART# into sites [Search Box] at [GoKartsRus.com](http://GoKartsRus.com) TIP! - RIGHT CLICK LINK, SELECT OPEN IN NEW TAB
- 3) Add all needed parts to Shopping Cart | Complete "Checkout" | ✓ Done!

If a part does not come up in a Site Search, please [Contact Us](#) (include part# in email)

LOWEST PRICES!

## THIS VEHICLE IS FOR OFF-ROAD USE ONLY

BEFORE OPERATING THIS VEHICLE, THE OWNER AND/OR OPERATOR MUST UNDERSTAND THE VEHICLE WAS NOT DESIGNED OR MANUFACTURED TO MEET SPECIFICATIONS FOR USE ON STREETS, HIGHWAYS, OR THOROUGHFARES AND HAVE READ AND HAVE AN UNDERSTANDING OF ALL THE INSTRUCTIONS FOR SAFE ASSEMBLY AND OPERATION AS WELL AS THE INSTRUCTIONS GOVERNING THE ENGINE AND OTHER PORTIONS OF THE VEHICLE.

# PARTS LIST MODEL 495B

REF	PN	DESCRIPTION
1	13101-13 13101-44	FRAME - ORANGE FRAME - BRONZE
<b>ASM</b>	10869	TIE ROD ASM LONG (INCL. 2, 4-7)
<b>ASM</b>	5020	TIE ROD ASM SHORT (INCL. 3-7)
2	10868	TIE ROD 19.0
3	5004	TIE ROD 7.25
4	1415	TIE ROD END LH THREAD
5	1414	TIE ROD END RH THREAD
6	9024	NUT 3/8-24 JAM LH THREAD
7	9092	NUT 3/8-24 JAM RH THREAD
8	9674-16	SPACER 3/8 ID X 3/8 LONG
9	9146	BOLT 3/8-16 X 1.50
10	9158	BOLT 3/8-16 X 2.25
11	9006	BOLT 1/2-20 X .50 HEX FLANGED WHIZ
<b>NI</b>	10548-2Z	SPINDLE WELDMENT LEFT - BLACK
12	10549-2Z	SPINDLE WELDMENT RIGHT - BLACK
13	9709	COMPRESSION SPRING
14	5682	BOLT 1/2-13 X 5.500
15	13503	NUT 1/2-13 CENTERLOCK
16	13384	NUT 5/8-11 CENTERLOCK
17	1104	SPACER SPLIT .8120D .625ID 1.000L
18	12490	WHL ASSY STL 6" FREE 5/8 BRGS 145/70 KN (INCL. 19 & 20)
19	4915C	REPLACEMENT TIRE FOR #12490
20	3802	REPLACEMENT TUBE FOR #12490
21	5090	BEARING 5/8 I.D. X 1-3/8 OD SNAP RING
22	5950	SPANNER 5/8 I.D. X 2-1/8
23	10381	WH ASM 8IN STL HEXWH 18X950 KN (INCL. 24 & 25)
24	3548K	REPLACEMENT TIRE FOR #10381
25	1430	REPLACEMENT TUBE FOR #10381
26	12359	AXLE
27	3941H	BEARING SEALED 7/8" HEX
28	1760	BEARING FLANGE
29	4662-16	SPACER 1.000ID 4.250L
30	5222-16	SPACER 1.00ID X 1.250L - ZINC
31	9085	NUT 3/8-16 TOPLOCK HEX ZINC
32	1119	SPACER .625ID 1.0620D .125THK Z
34	6309-16	THROTTLE PEDAL
35	9503	PEDAL SPRING - RIGHT WOUND
36	9929	RUBBER CAP .25ID X .25 BLACK
37	8251	THROTTLE CABLE 74.50 INCH

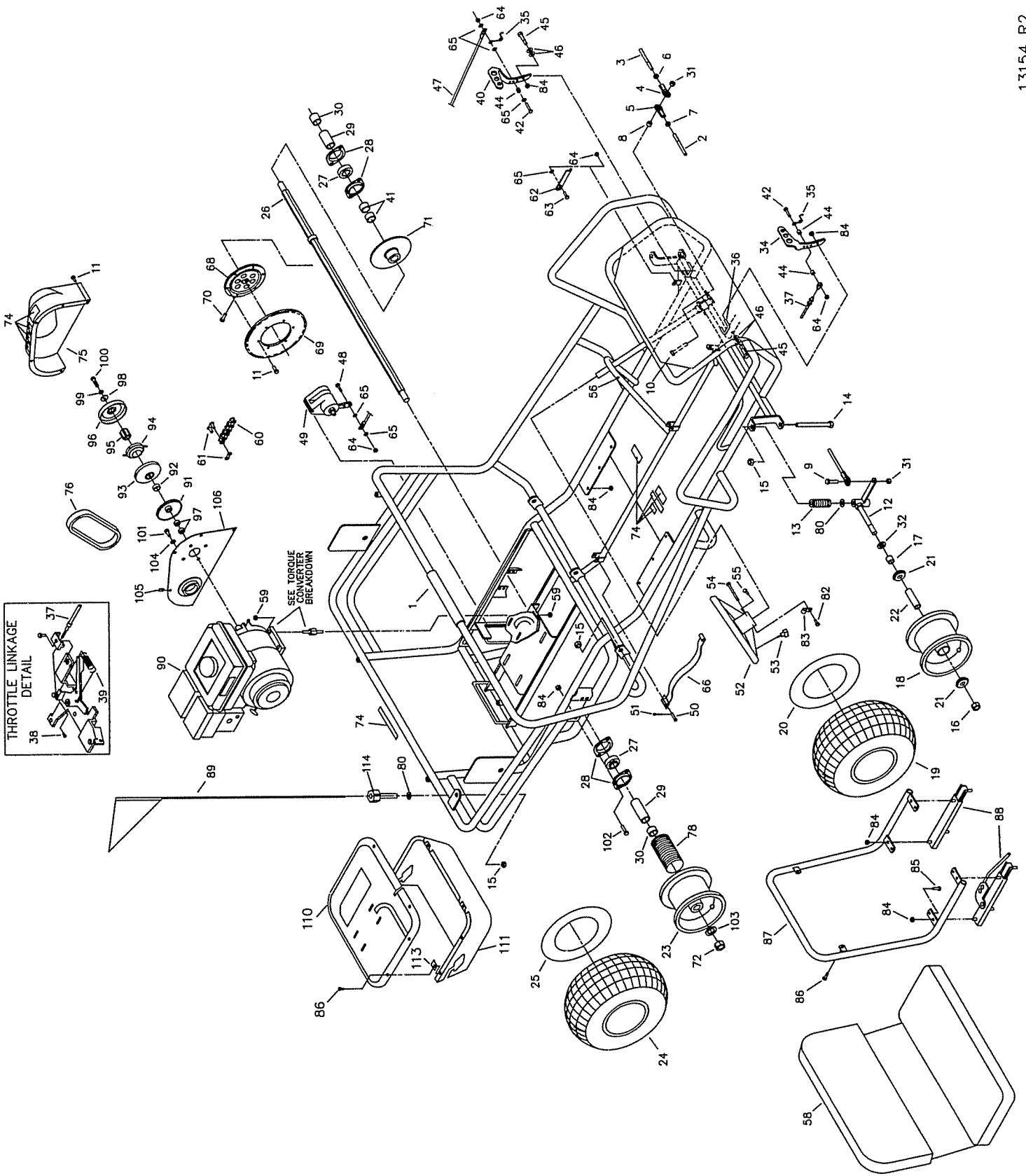
REF	PN	DESCRIPTION
38	12347	SWIVEL SCREW
39	12348	RETURN SPRING
40	6293-16	BRAKE PEDAL
41	2265-16	SPACER 1.000ID .750L
42	1848	BOLT 1/2-20 X 1.25
43	13504	BOLT 1/2-13 X 1.00
44	1389	BUSHING 1/4 ID X .313
45	1447	BOLT 3/8 X 1-1/8 SHOULDER
46	9091	WASHER FLAT 3/8 SAE N
47	12318-2	BRAKE ROD - BLACK
48	1847	BOLT 1/2-20 X 1.00
49	9597	BRAKE CALIPER ASSEMBLY
50	9118	CLEVIS PIN 1/4 X 1.250 Z
51	9116	COTTER PIN 3/32 X .750 Z
52	6038	STEERING WHEEL
53	9799	STOP SWITCH WIRE ASSEMBLY
<b>NI</b>	12273	WIRE HARNESS
54	9080	BOLT 1/2-20 X 2.750
55	9160	BOLT 1/4-20 X .875
56	9796	BOLT #12-24 X .500 SELF TAPPING
57	6320	HEADREST PAD
58	12734	SEAT BACK/BOTTOM
59	1263	NUT 5/16-18 HEX FLANGED WHIZ
60	6511	CHAIN 420 X 66 ML (INCL. #61)
61	2037	MASTERLINK - 420 CHAIN
62	1982-2	PEDAL LATCH - BLACK
63	1846	BOLT 1/2-20 X .750
64	9057	NUT 1/2-20 TOPLOCK
65	1854	WASHER #14 FLAT MS Z
66	4372	HANDHOLD STRAP
68	6280H	SPROCKET HUB HEX
69	9338	SPROCKET 420 X 60 TEETH
70	6701	BOLT 5/16-18 X 1.250 SHCS
71	9511H	BRAKE DISK
72	13355	NUT 3/4-10 CENTERLOCK HEX
73	11329	DECAL SHEET - BAR WARNINGS
74	11330	DECAL SHEET - WARNINGS
75	11776	TAV COVER
76	5959	DRIVE BELT
77	8778	LAP SHOULDER SEAT BELT

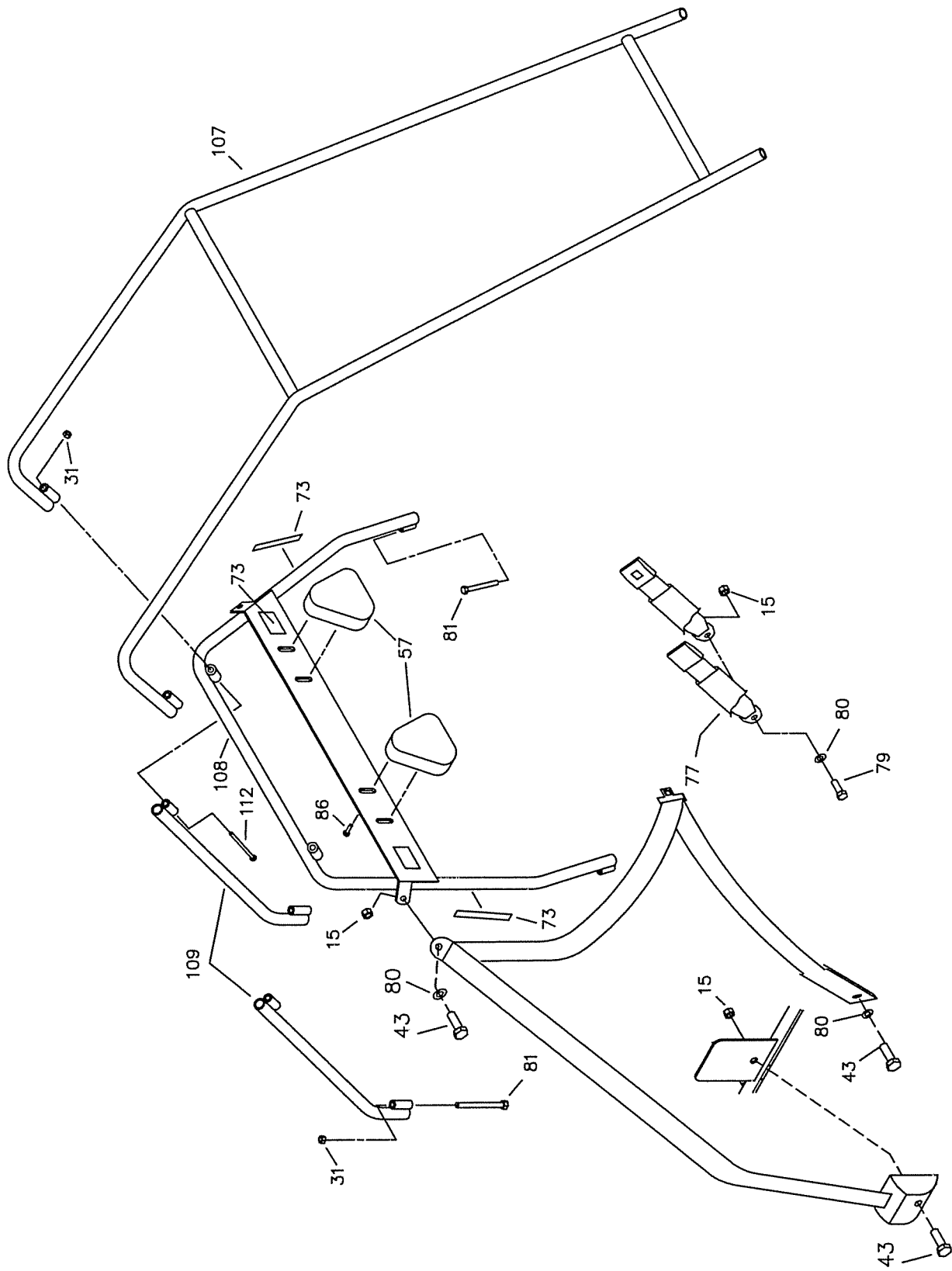
REF	PN	DESCRIPTION
78	G0631	LOOM 6.312 L 1.625 ID
79	9188	BOLT 1/2-13 X 1.50
80	9022	WASHER 1/2 STD FLAT
81	2386	BOLT 3/8-16 X 3.50
82	5287	BOLT #10-16 X .375 SELF TAPPING
83	5288	WIRE CLAMP
84	1189	NUT 5/16-18 HEX TOPLOCK
85	9189	BOLT 1/2-20 X .875 WHIZ FLANGE
86	1876	BOLT 1/2-20 X .625 WHIZ FLANGE
87	9968-2	SEAT FRAME - BLACK
88	6734	SEAT SLIDE - PAIR
89	5447	SAFETY FLAG - 6FT
90	12247 12249	ENGINE - 5HP ENGINE - 6.5HP
<b>ASM</b>	13100	DRIVER PULLEY ASM (INCL. 91-96)
91	**	STATIONARY SHEAVE
92	200349	BUSHING
93	**	MOVEABLE SHEAVE
94	**	SHOE ASSEMBLY
95	**	HUB
96	**	DRUM
97	1938	SPACER 3/4 I.D. X 3/8 LONG
98	1398	WASHER 21/64 ID X 1-1/4 X 1/8
99	1124	WASHER 5/16 SPLITLOCK
100	8204	BOLT 5/16-24 X 2-1/4
101	9101	BOLT 5/16-24 X .500 W/ NYLOK
102	2264	BOLT 5/16-18 X 1/4 LONG
103	1194	WASHER 3/4 SAE FLAT
104	9060	WASHER 5/16 FLAT
105	8227	NUT 1/4-20 TINNERMAN
106	13598-2	ENGINE BACKING PLATE - BLACK
107	13140-2	OVERHEAD BAR - BLACK
108	13138-2	CENTER BAR - BLACK
109	13142-2	REAR BAR - BLACK
110	13162	TOP COVER
111	12288	BOTTOM COVER
112	6452	BOLT 3/8-16 X 5.00
113	2449	TINNERMAN NUT
114	11361	FLAG MOUNTING BOLT

**ASM** = ASSEMBLY

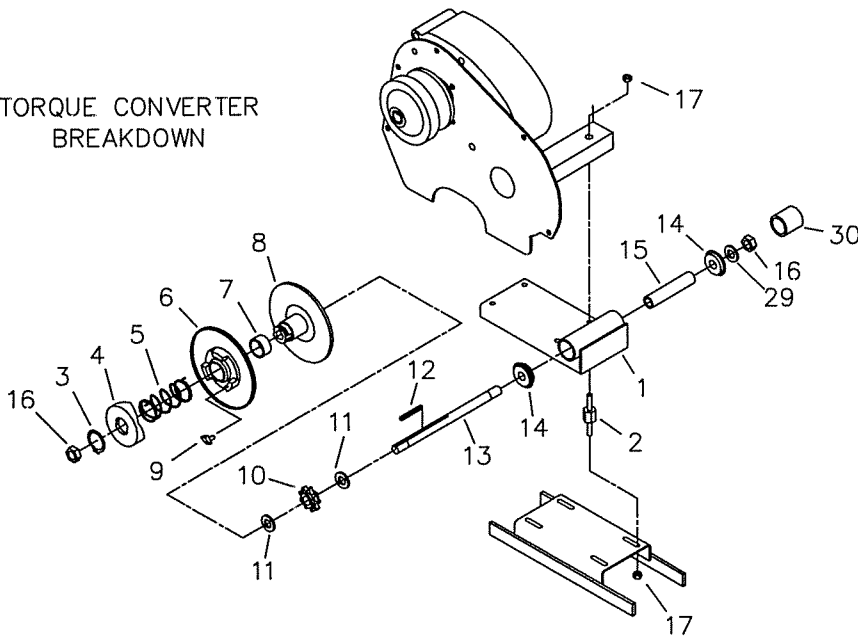
**NI** = NOT ILLUSTRATED

\*\* = NOT SOLD SEPERATELY

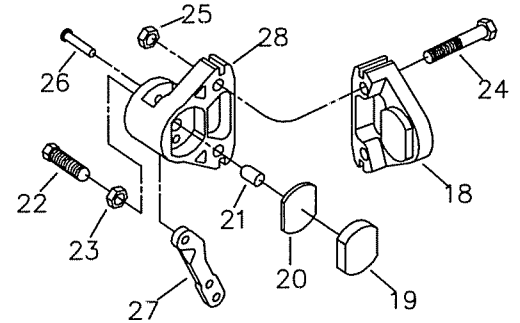




TORQUE CONVERTER  
BREAKDOWN



CALIPER BREAKDOWN



REF	PART #	DESCRIPTION
1	13594-2	CHASSIS WELDMENT, BLACK
2	1356	STUD ASSEMBLY
<b>ASM</b>	13373	DRIVEN PULLEY 30S 217610 (INCL. 3-9)
3	11342	RETAINING RING
4	-----	CAM
5	6805	SPRING
6	-----	MOVEABLE SHEAVE
7	-----	BUSHING
8	-----	STATIONARY SHEAVE
9	6804	BUTTON, NYLON
10	8720	SPROCKET, 9-TEETH INT. KEY
11	1119	SPACER, 5/8" I.D. X 1/8"
12	3403	KEY, 3/16" SQ. X 2"
13	2777	JACKSHAFT, 5/8" X 10.00
14	5090	BEARING, 5/8" I.D.
15	13592	SPANNER, 5/8" I.D. X 5-1/2"
16	1136	NUT, 5/8-18 CENTERLOCK HEX JAM
17	1263	NUT, 5/16-18 FLANGED WHIZ
<b>ASM</b>	9597	BRAKE CALIPER ASSEMBLY
<b>ASM</b>	9810	BRAKE PAD SERVICE KIT
18	-----	ANVIL WITH LINING
19	-----	BRAKE LINING
20	3928	BACKING PLATE
21	3930	ACTUATOR PIN
22	3931	ADJUSTOR PIN
23	3932	NUT, JAM
24	9158	BOLT, 3/8-16 X 2-1/4"
25	9058	NUT, 3/8-16 TOPLOCK HEX
<b>ASM</b>	6534	MB-1 SEVRVICE KIT
26	-----	GROOVE PIN
27	-----	LEVER
28	-----	BRAKE HOUSING
29	1469	WASHER .625ID 1.062OD .062 THK Z
30	11808	VINYL CAP