

Operator's Manual
SUPPLEMENT
Model No. 584B-0

⚠ WARNING:

Read Engine
Owner's Manual,
Vehicle Operator's
Manual, and
Supplement
Carefully Before
Operating Vehicle.

Parts List



ORDERING PARTS

- FAST & EASY!**
- 1) Seek Part(s) from your models illustrated diagram, cross over REF# to PART#
 - 2) Type PART# into sites [Search Box] at GoKartsRus.com TIP! - RIGHT CLICK LINK, SELECT OPEN IN NEW TAB
 - 3) Add all needed parts to Shopping Cart | Complete "Checkout" | ✓ Done!

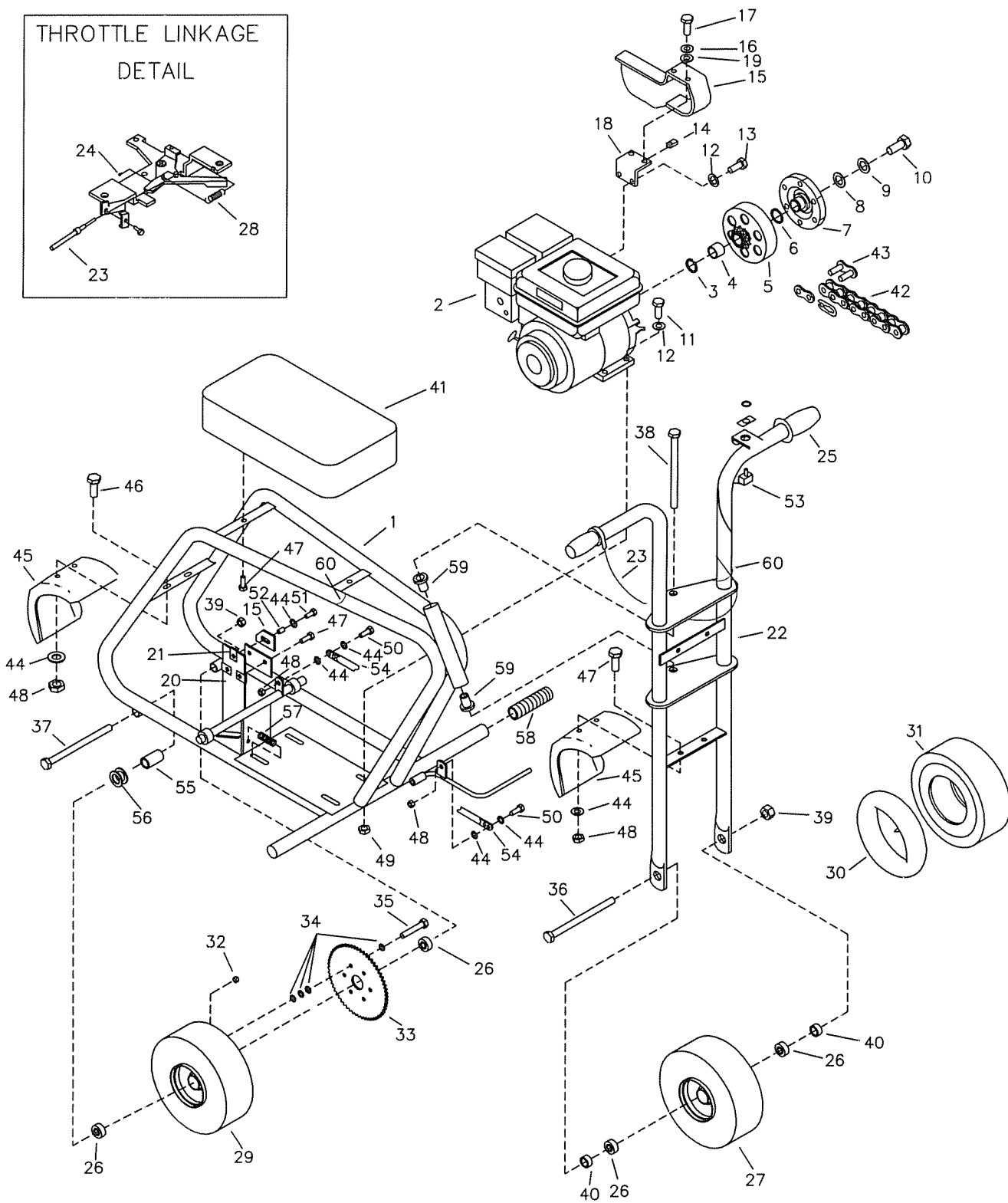
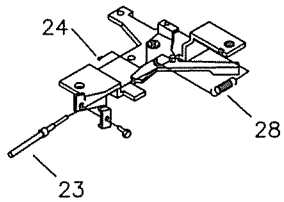
If a part does not come up in a Site Search, please [Contact Us](#) (include part# in email)

LOWEST PRICES!

**THIS VEHICLE IS FOR
OFF-ROAD USE ONLY**

BEFORE OPERATING THIS VEHICLE, THE OWNER AND/OR OPERATOR MUST UNDERSTAND THE VEHICLE WAS NOT DESIGNED OR MANUFACTURED TO MEET SPECIFICATIONS FOR USE ON STREETS, HIGHWAYS, OR THOROUGHFARES AND HAVE READ AND HAVE AN UNDERSTANDING OF ALL THE INSTRUCTIONS FOR SAFE ASSEMBLY AND OPERATION AS WELL AS THE INSTRUCTIONS GOVERNING THE ENGINE AND OTHER PORTIONS OF THE VEHICLE.

THROTTLE LINKAGE
DETAIL



PARTS LIST FOR MODEL 584B-0

REF NO.	PART NO.	DESCRIPTION	REF NO.	PART NO.	DESCRIPTION
1	12315-37	584 FRAME - RED	31	2246	REPLACEMENT TIRE
2	12246	ROBIN ENGINE 4HP OHC 3200RPM	32	1189	NUT 5/16-18 HEX TL Z
ASM	4335	CLUTCH .75ID SGL SPKT (INCL 3-7)	33	8007-2	SPROCKET SA 35P 60T - BLACK
3	3141	SNAP RING	34	9060	WASHER 5/16 TYP A PLAIN SAE N Z
4	3143	BEARING	35	9176	BOLT 5/16-18 X 1.000 HHCS G5 Z
5	4491	DRUM W/ SPROCKET (INCL. #4)	36	9157	BOLT 5/8-11 X 6.500 HHCS G5 Z
6	3146	FIBER WASHER	37	2772	BOLT 5/8-11 X 9.500 HHCS G5 Z
7	4496	CLUTCH CENTER	38	1138	BOLT 5/8-11 X 7.000 HHCS G5 Z
8	1124	WASHER 5/16 SL Z	39	1046	NUT 5/8-11 TOP LOCK HEX Z
9	1398	WASHER 21/64 ID X 1 1/4 X 1/8	40	4266-16	SPACER .875OD .625ID 1.125L ZINC
10	1491	BOLT 5/16-24 X .750 HHCS G5	41	8594	SEAT
11	9186	BOLT 5/16-18 X 1.500 HHCS G5 Z	42	2280	CHAIN 35 X 116 W/ MASTERLINK
12	9030	WASHER 5/16 INTERLOCK	43	1269	MASTER LINK 35
13	9101	BOLT 5/16-24 X .500 NYLOCK	44	1854	WASHER NBR 14 FLAT MS Z
14	5135	TINNERMAN NUT	45	2018-2	FENDER
15	6495	COVER 584 W/DECALS	46	5839	BOLT 1/4-20 X .750 HH WF Z
16	6039	WASHER NBR 10 INTERLOCK	47	9006	BOLT 1/4-20 X .500 HH WF
17	6046	BOLT NBR 10-24 X .500 HHMS Z	48	9057	NUT 1/4-20 TOP LOCK Z
18	6480-2	CHAIN GUARD BRACKET - BLACK	49	1263	NUT 5/16-18 HEX WHIZ FLANGE Z
19	9104	WASHER NBR 10 FLAT STD Z	50	1846	BOLT 1/4-20 X .750 HHCS G5 Z
20	6479-2	LOWER COVER - BLACK	51	1845	BOLT 1/4-20 X .625 HHCS G5 Z
21	2449	TINNERMAN NUT	52	1389	BUSHING .25ID X .031G X .313
22	6352-37	HANDLE BAR - RED	53	12305	STOPSWITCH ASM W/NUT & PLATE
ASM	13093	TWISTGRIP ASSEMBLY (INCL #23)	54	6336-2	BRAKE ROD - GBLK
23	11525	THROTTLE CABLE 56.25IN	55	12093	BUSHING 5/8 ID X 1/2 IN L Z
24	12347	ROBIN SWIVEL SCREW	56	1119	SPACER .625ID 1.062OD .125THK Z
25	11158	DUMMY GRIP	57	4365	SPRING
26	5090	BEARING 5/8 ID 1-3/8OD SNAP RING	58	2274	FOOT GRIP
27	10376	WH ASM 5IN STL WH 4.10 X 3.50 STD	59	9507	BUSHING 3/4 OD X 5/8 ID X 1.0
28	12348	ROBIN RETURN SPRING	60	1019	TY-WRAP
29	10379	WH ASM 5IN STL DRIVE WH 4.10 X 3.50 STD	NI	12426	ENGINE OM ROBIN 4HP-10HP
30	1753	REPLACEMENT TUBE	NI	11330	DECAL SHEET - WARNINGS LARGE

ASM = Assembly
NI = Not Illustrated

ASSEMBLY PROCEDURES

GENERAL

1. Carefully unpack all parts from shipping containers.
2. Locate and unpack the Mini-Bike Operator's Manual.
3. Complete the information block on the back page of the Operator's Manual.
4. Identify and verify all parts in the Parts Pack.
5. Reference the Exploded View for correct assembly of all parts.

FRONT WHEEL ASSEMBLY

NOTE: For easier assembly, complete step 2 listed under Miscellaneous Assembly.

1. Insert one Bolt (REF. NO 36) through the Fork Assembly lower axle mounting hole. Place one Spacer (REF. NO 40) on the Bolt. Insert the Bolt into the Front Wheel Assembly. HINT: If the Bolt will not slide into the Front Wheel Assembly, insert a long screwdriver or similar object, from the other side of the Axle. Use the screwdriver to move the internal spanner so that it does not interfere with the Bolt. Place the remaining Spacer on the Bolt. Insert the Bolt through the other hole in the Fork Assembly and secure with one Nut (REF. NO 39). Tighten until all side play is removed from the Front Wheel Assembly. Ensure that the Wheel rotates freely.

THROTTLE ASSEMBLY

The Twist Grip Assembly must be mounted on the Handlebar before the Fork Assembly is mounted to the Frame. The length of the Throttle Cable will not allow assembly in reverse order.

1. Remove the rear-most tie-wrap holding the Twist Grip and Stop Switch (REF. NO 53) secure during shipping. Discard the tie-wrap. Find the two handlebar grips shipped with your unit. Slide one Handlebar grip (REF. NO 25) onto the left handlebar.
2. Separate the Throttle Cable and Stop Switch Wire. Lay the Stop Switch to the left side of the Frame. Route the Throttle Cable (REF. NO 23), as shown in Figure 1, along the top, right side of the Frame, and between the Upper Crown Plate and Front Plate Mounting Bracket.
3. Loosen the two Screws on the Twist Grip. Slide the Twist Grip all the way onto the Right Handlebar. Do not tighten the Screws at this time.

FORK ASSEMBLY

1. Place one Bushing (REF. NO 59), which can be found in the parts bag that came with your Mini-Bike, in each end of the Frame Pivot Tube. HINT: The Bushings may be held in place with a small strip of tape. Do not place tape over the hole.
2. To mount the Fork Assembly to the Frame, align the Fork Pivot Holes with the Frame Pivot Tube and insert the Bolt (REF. NO 38) through the Fork Holes and Bushings. Ensure the Throttle Cable is to the right of the Pivot Tube, see Figure 1. It may be necessary to tap the head of the Bolt with a hammer to seat it in position against the Nut welded to the bottom side of the Lower Fork Plate. Tighten the Bolt until there is no play between the Fork and the Pivot Tube, but will still allow the Fork to rotate freely.



WARNING: The Fork must be able to rotate freely for safe operation.

THROTTLE ASSEMBLY CONTINUED

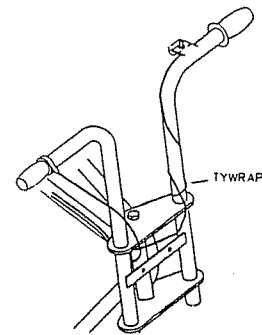


Figure 1: Routing Diagram

4. Slide the Twist Grip all the way onto the Right Handlebar, then back off approximately $\frac{1}{4}$ ". This will ensure that the Twist Grip will not bottom out on the end of the handlebar.
5. Rotate the Twist Grip so that the Throttle Cable points downward and slightly ahead. The Throttle Cable and Housing should form a smooth curve from the Twist Grip to the upper Frame Tube, see Figure 1. Tighten the two Screws in the Twist Grip securely.



CAUTION: Rotate the Twist Grip counterclockwise to the full open position and release it to ensure that it snaps back to the idle position. The Twist Grip must rotate easily in both directions to ensure safe operation. If the Twist Grip does not rotate easily in both directions, repeat the assembly procedure.

STOP SWITCH ASSEMBLY

1. Route the Stop Switch Wire (REF. NO 53), as shown in Figure 1, along the Top, Right side of the Frame, under the Top Crown Plate, and between the Pivot Tube and Right Fork Tube. Wrap the Wire around the Left Handlebar one time. Remove the Nut and On/Off Plate from the Stop Switch. Pass the Stop Switch up through the mounting hole on the Handlebar. Replace the On/Off Plate and the Nut. Work any slack in the Stop Switch Wire towards the Pivot Tube and apply one tie-wrap (REF. NO 60) as shown in Figure 1. Securely tighten the Nut.
2. Turn the Handlebar through its full range of movement to ensure that neither the Throttle Cable Housing nor the Stop Switch Wires bind, stretch, or are pinched in the process. Correct any problems.

3. If there are any problems or discrepancies, contact your Dealer or the Customer Service Department at Manco PowerSports.

NOTES:

SEAT ASSEMBLY

1. Mount the Seat to the Frame using two Bolts (REF. NO 47). Fasten securely. Do not over tighten.

MISCELLANEOUS ASSEMBLY

1. Mount the FacePlate to the Forks using the following hardware found in the hardware pack: 2 Bolts (1/4-20 x 1/2"), 2 Washers (#14 Flat), and 2 Nuts (1/4-20 Lock). The Washers should be positioned between the Bolts and the FacePlate. Tighten securely.
2. Mount the Front Fender (REF. NO 45) to the Forks using two Bolts (REF. NO 47), two Washers (REF. NO 44), and two Nuts (REF. NO 48). The Washers should be positioned between the Nut and the Fender. Tighten securely.
3. Slide Foot Grips (REF. NO 58) on the Frame.

PRE-RIDE MAINTENANCE

1. Carefully and completely read the Engine Owner's Manual. Fill the Engine Crankcase with oil as described in the Engine Owner's Manual.



CAUTION: The Engine is shipped without oil in the crankcase.

2. Carefully and completely read the Mini-Bike Operator's Manual. Follow the Pre-Ride Inspection steps. Fill the Fuel Tank with Fuel and lubricate appropriate points as described in the Mini-Bike Operator's Manual.