

Operator's Manual SUPPLEMENT

⚠ WARNING:

Read Engine
Owner's Manual,
Vehicle Operator's
Manual, and
Supplement
Carefully Before
Operating Vehicle.

Parts List

Model Numbers

713 3.5hp Indy Kar

715 5.0hp Indy Kar

ORDERING PARTS

FAST & EASY!

- 1) Seek Part(s) from your models illustrated diagram, cross over REF# to PART#
- 2) Type PART# into sites [Search Box] at GoKartsRus.com TIP! - RIGHT CLICK LINK, SELECT OPEN IN NEW TAB
- 3) Add all needed parts to Shopping Cart | Complete "Checkout" | ✓ Done!

If a part does not come up in a Site Search, please [Contact Us](#) (include part# in email)

LOWEST PRICES!

THIS VEHICLE IS FOR
OFF-ROAD USE ONLY

BEFORE OPERATING THIS VEHICLE, THE OWNER AND/OR OPERATOR MUST UNDERSTAND THE VEHICLE WAS NOT DESIGNED OR MANUFACTURED TO MEET SPECIFICATIONS FOR USE ON PUBLIC ROADS, STREETS, HIGHWAYS, OR THOROUGHFARES AND HAVE READ AND HAVE AN UNDERSTANDING OF ALL THE INSTRUCTIONS FOR SAFE ASSEMBLY AND OPERATION AS WELL AS THE INSTRUCTIONS GOVERNING THE ENGINE AND OTHER PORTIONS OF THE VEHICLE.

**REPAIR PARTS
MODELS 713 & 715**

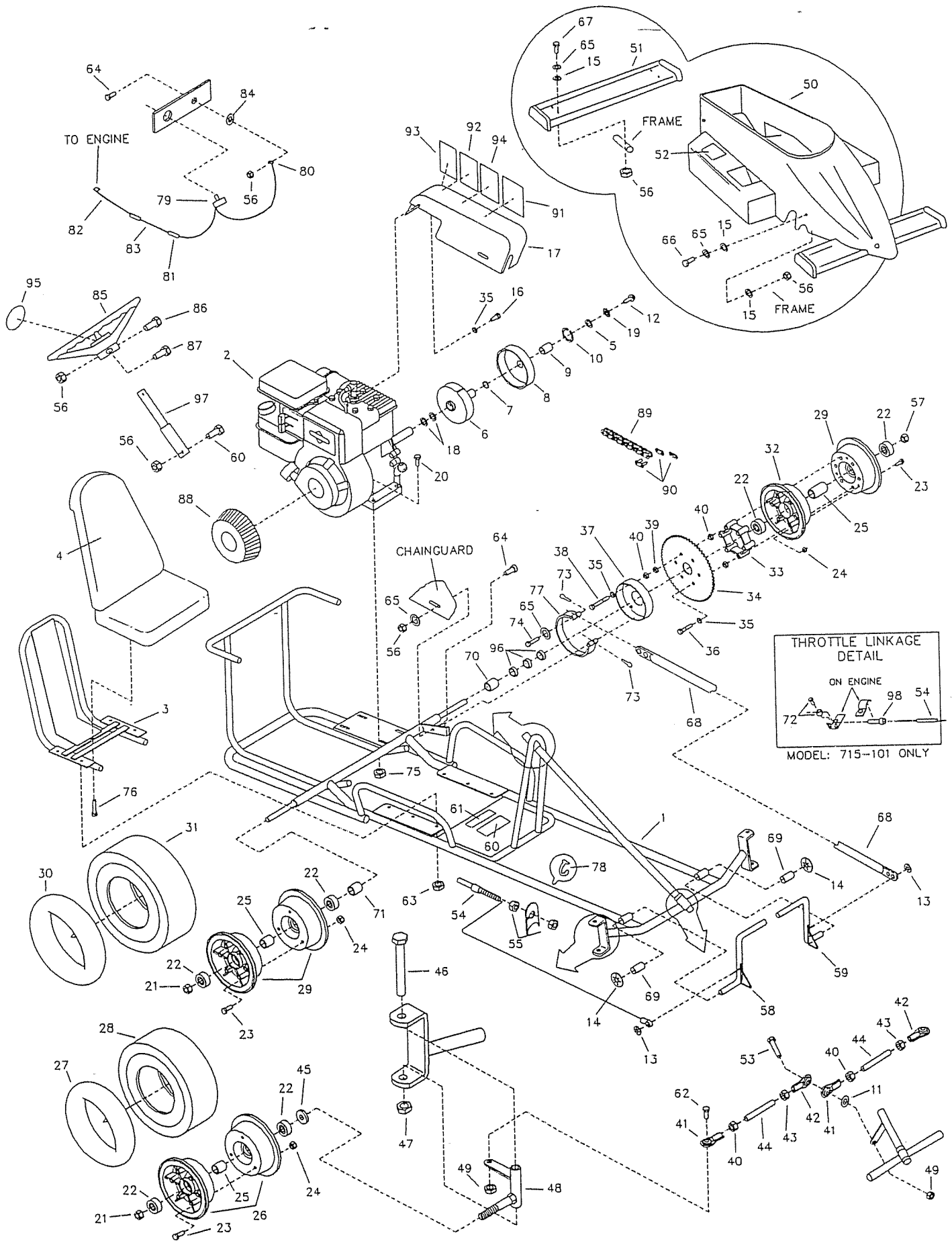
| REF NO. | PART NO. | DESCRIPTION | REF NO. | PART NO. | DESCRIPTION |
|---------|----------|---------------------------------------|---------|----------|-------------------------------------|
| 1 | 9565-2 | Frame | 50 | 4204 | Indy Body (Specify Color) |
| 2 | 8049 | Engine, 3.5hp (713) | 51 | 4205 | Indy Spoiler (Specify Color) |
| | 6010 | Engine, 5hp (715-100) | 52 | 3270 | Decal, No Step |
| | 9737 | Engine, 5.5hp (715-101) | 53 | 9145 | Bolt, 3/8-16 x 1.75" |
| 3 | 4399-2 | Seat Frame | 54 | 1496 | Throttle Cable w/ Housing (inc. 55) |
| 4 | 1976 | Seat Pad | 55 | 9058 | Nut, 5/16-24 Jam |
| 5 | 1943 | Washer, 9/32 ID x 1 1/4 OD Fender * | 56 | 9057 | Nut, 1/4-20 Toplock |
| ASM | 4195 | Clutch Assembly (inc. 6-10) | 57 | 1046 | Nut, 5/8-11 Toplock (713) |
| 6 | 4496 | Clutch Rotor | | 9155 | Nut, 5/8-11 Jam (715) |
| 7 | 3146 | Washer, Fiber | 58 | 3279 | Pedal, Throttle |
| 8 | 9781 | Drum w/ Sprocket (inc. 9) | 59 | 3280 | Pedal, Brake |
| 9 | 3143 | Bushing | 60 | 4504 | Decal, Yellow Warning |
| 10 | 3141 | Snap Ring | 61 | 2832 | Decal, No Passengers |
| 11 | 9091 | Washer, 3/8" Flat | 62 | 9146 | Bolt, 3/8-16 x 1.50" |
| 12 | 5733 | Bolt, 1/4-28 x .75" Whiz Flange (713) | 63 | 1189 | Nut, 5/16-18 Toplock |
| | 1491 | Bolt, 5/16-24 x .75" (715) | 64 | 1846 | Bolt, 1/4-20 x .75" |
| 13 | 9149 | Nut, 1/4" Push | 65 | 1854 | Washer, #14 Flat |
| 14 | 9150 | Nut, 1/2" Push | 66 | 1848 | Bolt, 1/4-20 x 1.25" |
| 15 | 3463 | Washer, 1/4" ID Rubber | 67 | 1849 | Bolt, 1/4-20 x 1.50" |
| 16 | 9101 | Bolt, 5/16-24 x .50" | 68 | 5097 | Brake Rod |
| 17 | 9569 | Chainguard | 69 | 3288 | Bushing, 1/2" ID x .5" |
| 18 | 1168 | Washer, 3/4" ID * | 70 | 2024 | Spacer, 5/8" ID x 1.50" |
| 19 | 5732 | Washer, 1/4" Int/Ext Lock (713) | 71 | 6090 | Spacer, 5/8" ID x 1.25" |
| | 9001 | Washer, 3/8" Int/Ext Lock (715) | 72 | 1018 | Throttle Cable Stop |
| 20 | 9186 | Bolt, 5/16-18 x 1.50" | 73 | 9116 | Cotter Pin |
| 21 | 1046 | Nut, 5/8-11 Toplock | 74 | 9118 | Clevis Pin |
| ASM | 4553 | Front Wheel Assembly (inc. 22-28) | 75 | 1263 | Nut, 5/16-18 Flange |
| ASM | 5901 | Idle Wheel Asm (inc. 22-25,29-31) | 76 | 1876 | Bolt, 1/4-20 x .625" Whiz Flange |
| ASM | 9566 | Drive Wheel Asm* (inc. 22-25,29-40) | 77 | 1036 | Brake Band |
| ASM | 9567 | Drive Wheel Asm** (inc. 22-25, 29-40) | 78 | 1019 | Ty-Wrap |
| 22 | 1093 | Bearing | ASM | 9568 | Stop Switch Assembly (inc. 79-83) |
| 23 | 5839 | Bolt, 1/4-20 x .75" | 79 | 1392 | Stop Switch |
| 24 | 1186 | Nut, 1/4-20 | 80 | 1393 | Ring Terminal |
| 25 | 5949 | Spanner | 81 | 2650 | Butt Connector |
| 26 | 5158 | Wheel Half, Front 4" | 82 | 1406 | Wire w/ Terminal |
| 27 | 1053 | Tube, Front 4" | 83 | 1394 | Wire, 50" w/ Butt Connector |
| 28 | 1751 | Tire, Front 4.10/3.50 x 4" Slick | 84 | 5732 | Washer, 1/4" Int/Ext Lock |
| 29 | 8004 | Wheel Half, Rear 5" Untapped | 85 | 6038 | Steering Wheel |
| 30 | 1753 | Tube, Rear 5" | 86 | 9080 | Bolt, 1/4-20 x 2.75" |
| 31 | 6035 | Tire, Rear 4.10/3.50 x 5" Slick | 87 | 9160 | Bolt, 1/4-20 x .875" |
| 32 | 8006 | Wheel Half, Rear 5" Tapped | 88 | 6237 | Finger Guard * |
| 33 | 8008 | Spacer | 89 | 6511 | Chain, #420 x 66 Pitch (inc. 90) |
| 34 | 9493 | Sprocket, #420 Chain x 60 Teeth | 90 | 2037 | Master Link, #420 Chain |
| 35 | 9030 | Washer, 5/16 Lock | 91 | 1049 | Decal, Caution |
| 36 | 9127 | Bolt, 5/16-18 x 2.25" | 92 | 4912 | Decal, Warning |
| 37 | 1246 | Brake Drum | 93 | 6791 | Decal, Oil Clutch |
| 38 | 9051 | Bolt, 5/16-18 x 3" | 94 | 6621 | Decal, Tire Pressure |
| 39 | 2388 | Nut, 3/8-24 ** | 95 | 3296 | Decal, Steering Wheel Center |
| 40 | 9092 | Nut, 3/8-24 Jam, Right Hand Thread | 96 | 1119 | Spacer, 5/8 ID x .125" ** |
| ASM | 6982 | Tie Rod Assembly (inc. 40-44) | 97 | 3123-2 | Extension, Steering Column |
| 41 | 1414 | Tie Rod End, Right Hand Thread | 98 | 1628 | Throttle Cable Retainer |
| 42 | 1415 | Tie Rod End, Left Hand Thread | NI | 3025 | Vehicle Operator's Manual |
| 43 | 9024 | Nut, 3/8-24 Jam, Left Hand Thread | NI | 2600 | Engine Owner's Manual (713) |
| 44 | 6981 | Tie Rod | NI | 2601 | Engine Owner's Manual (715-100) |
| 45 | 1937 | Spacer, 5/8 ID x .25" Thick | NI | 2684E | Engine Owner's Manual (715-101) |
| 46 | 1264 | Bolt, 1/2-13 x 3.50" | NI | 6985 | Seat Slide Kit |
| 47 | 1012 | Nut, 1/2-13 Toplock | | | |
| 48 | 8021 | Spindle, Right Side | | | |
| NI | 8020 | Spindle, Left Side | | | |
| 49 | 9085 | Nut, 3/8-16 Toplock | | | |

* = 713 ONLY

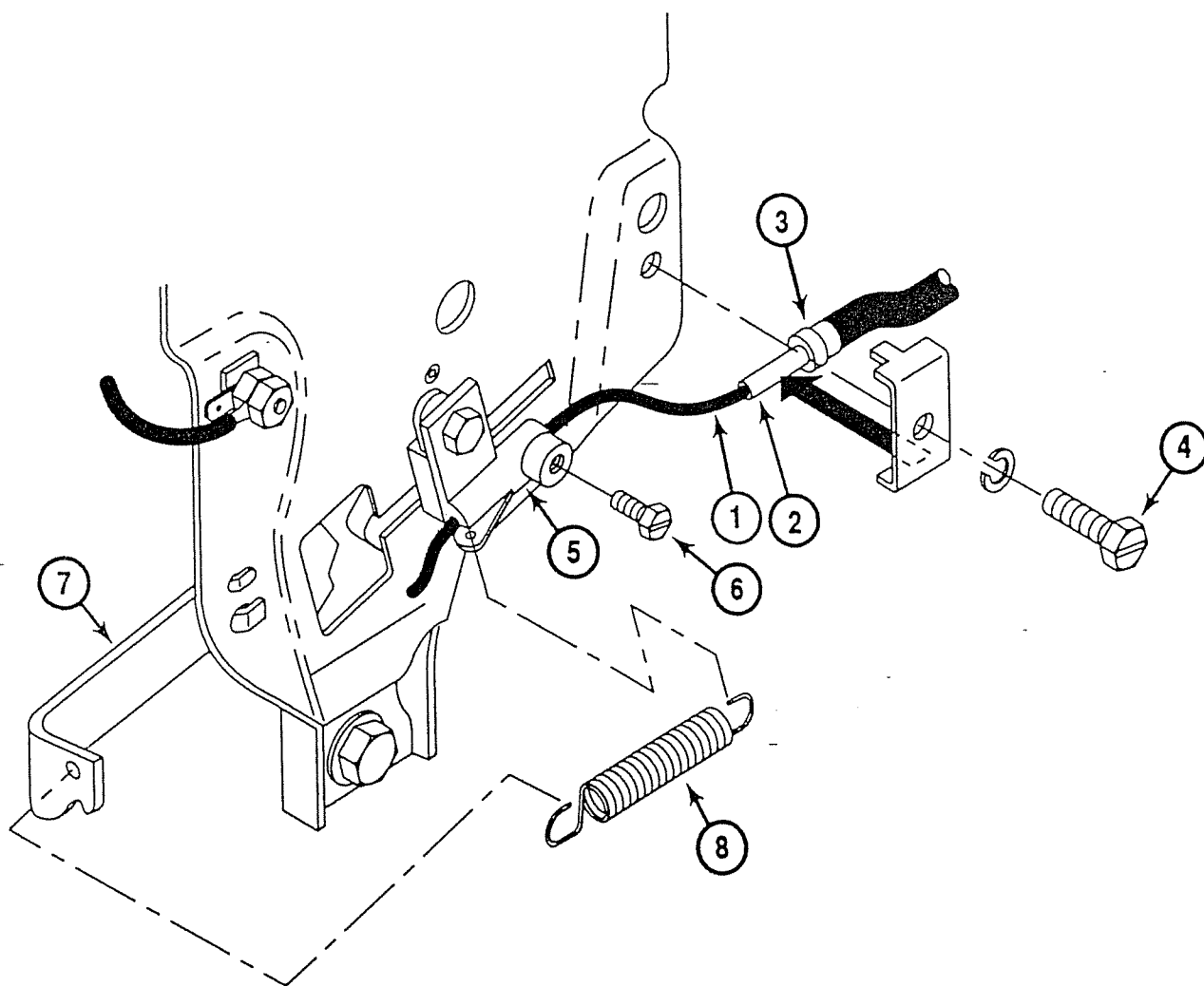
** = 715 ONLY

ASM = Assembly

NI = Not Illustrated



THROTTLE CABLE INSTALLATION



(Models 713-102 and 715-100 Only)

ASSEMBLY: Pass the Throttle Cable (Item 1) through the 1628 Cable Retainer (Item 2) and butt the Throttle Cable Housing End (Item 3) against the Inside Shoulder of the 1628 Cable Retainer (Item 2). The 1628 Cable Retainer (Item 2) is to be securely fastened to the engine with the Clamping Screw (Item 4). Pass the Wire End of the Throttle Cable Housing (Item 1) through the hole in the 5928 Cable Stop (Item 5). Before tightening 5929 Cable Stop Screw (Item 6):

1. Ensure 5926 Spring Anchor (Item 7), 5927 Spring (Item 8) and Throttle Cable are installed as illustrated above.
2. Ensure throttle pedal is in rearward (idle) position.
3. Ensure that there is no slack in the Throttle Cable Wire End (Item 1) with no tension applied to the spring (Item 8).
4. Ensure Throttle Cable Housing End (Item 3) is inside and against the 1628 Cable Retainer (Item 2).