

OPERATOR'S MANUAL SUPPLEMENT

Model No. 725 – 5.0HP Stock Kar

⚠ WARNING:

Read Engine Owner's Manual, Vehicle Operator's Manual, and Supplement Carefully Before Operating Vehicle.

Parts List



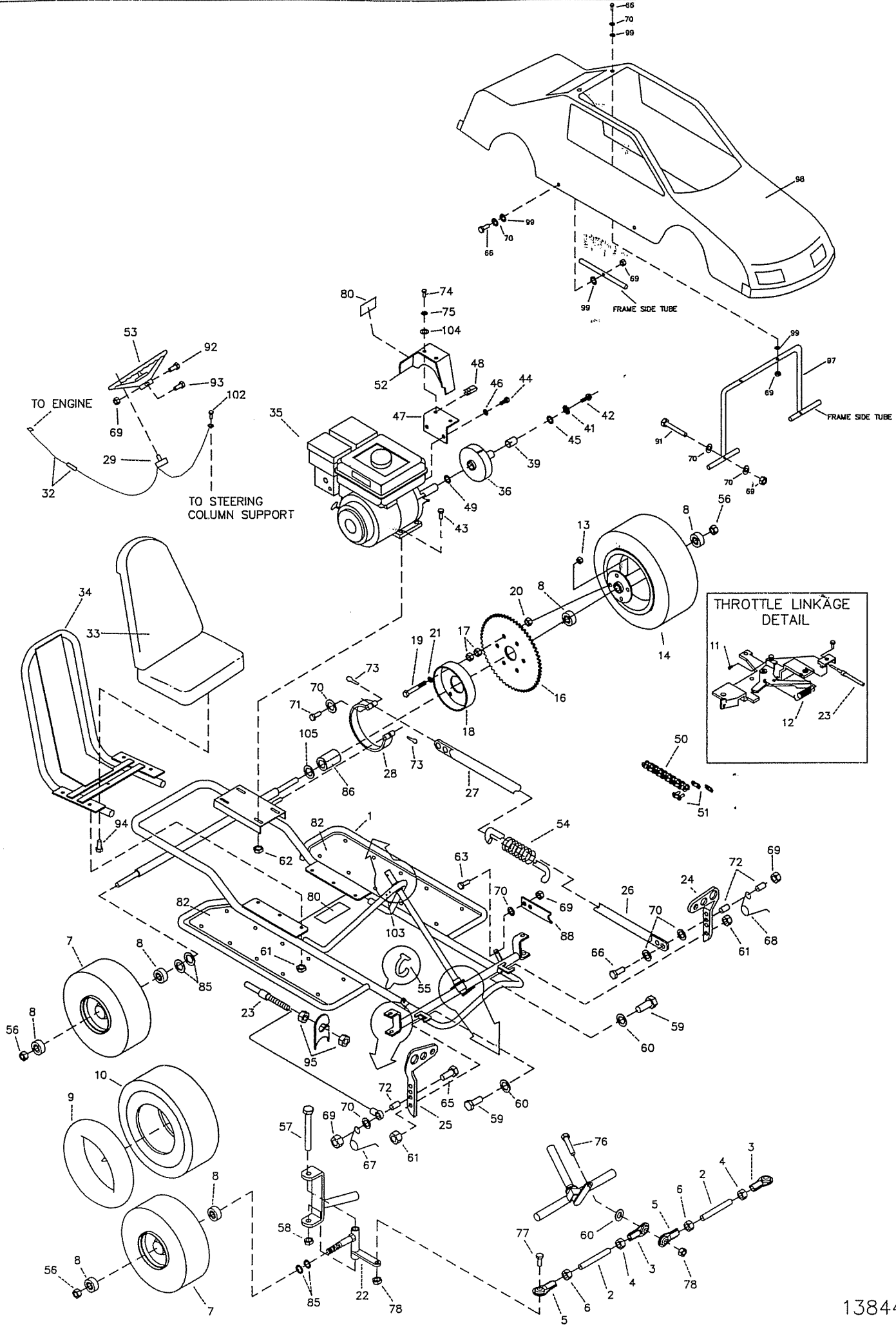
ORDERING PARTS

- FAST & EASY!**
- 1) Seek Part(s) from your models illustrated diagram, cross over REF# to PART#
 - 2) Type PART# into sites [Search Box] at GoKartsRus.com TIP! - RIGHT CLICK LINK, SELECT OPEN IN NEW TAB
 - 3) Add all needed parts to Shopping Cart | Complete "Checkout" | ✓ Done!
- LOWEST PRICES!**

If a part does not come up in a Site Search, please [Contact Us](#) (include part# in email)

THIS VEHICLE IS FOR OFF-ROAD USE ONLY

BEFORE OPERATING THIS VEHICLE, THE OWNER AND/OR OPERATOR MUST UNDERSTAND THE VEHICLE WAS NOT DESIGNED OR MANUFACTURED TO MEET SPECIFICATIONS FOR USE ON STREETS, HIGHWAYS, OR THOROUGHFARES AND HAVE READ AND HAVE AN UNDERSTANDING OF ALL THE INSTRUCTIONS FOR SAFE ASSEMBLY AND OPERATION AS WELL AS THE INSTRUCTIONS GOVERNING THE ENGINE AND OTHER PORTIONS OF THE VEHICLE.



PARTS LIST FOR 5HP STOCK KARS

REF	PART #	DESCRIPTION
1	5280-2	FRAME - BLACK
ASM	4355	TIE ROD ASSEMBLY (INCLUDES 2 - 6)
2	4352	TIE ROD 9.50 INCH
3	1415	TIE ROD END - LEFT THREAD
4	9024	NUT 3/8-24 LEFT THREAD JAM
5	1414	TIE ROD END - RIGHT THREAD
6	9092	NUT 3/8-24 HEX JAM ZINC
7	10374	WH ASM 5IN STL WH 4.10 X 3.50 SLK (INCLUDES 8 - 10)
8	5090	BEARING 5/8ID X 1-3/8OD SNAP RING
9	1753	TUBE 4.10/3.50 X 5
10	6035	TIRE 4.10/3.50 X 5 SLICK
11	12347	ENGINE SWIVEL SCREW
12	12348	ENGINE RETURN SPRING
13	9085	NUT 3/8-16 TOPLOCK HEX ZINC
ASM	10991	DRIVE WHEEL ASSY - 5IN STEEL (INCLUDES 8, 13, 14, 16 - 21)
14	10375	WH ASM 5IN STL DR WH 4.10 X 3.50 SLK
16	8007	SPROCKET SA 35P 60T
17	8409	NUT 1/2-20 HEX ZINC
18	1246-16	BRAKE DRUM 4IN - ZINC
19	9158	BOLT 3/8-16 X 2.25 HHCS G5 ZINC
20	9169	NUT 1/2-20 HEX JAM ZINC
21	9091	WASHER 3/8 FLAT SAE N ZINC
22	8021-2Z	RIGHT SPINDLE WITH GREASE ZERK
NI	8020-2Z	LEFT SPINDLE WITH GREASE ZERK
23	8252	THROTTLE CABLE 61INCH (INCLUDES 95)
24	6293-16	BRAKE PEDAL - ZINC
25	6309-16	THROTTLE PEDAL - ZINC
NI	9929	VINYL CAP .25 X .25 (PEDAL STOPS)
26	9945-2	FRONT BRAKE ROD - BLACK
27	9946-2	REAR BRAKE ROD - BLACK
28	1036	BRAKE BAND - 4INCH
ASM	9799	STOP SWITCH ASSEMBY (INCLUDES 29)
29	1392	TOGGLE SWITCH
32	12273	WIRE HARNESS
33	1976	SEAT
34	4399-2	SEAT FRAME - BLACK
35	12247	ENGINE - 5HP ROBIN
36	12971	CLUTCH - 35 - 12T/LD4S-5-BULK (INCLUDES 39)
39	13747	BUSHING - HILLIARD CLUTCH
41	1124	WASHER 5/16 SL ZINC
42	1491	BOLT 5/16-24 X .750 HHCS G5 ZINC
43	9186	BOLT 5/16-18 X 1.50 HHCS G5 ZINC
44	9101	BOLT 5/16-24 X .50 HHCS G5 NYLOCK Z
45	1398	BUSHING .25ID X .031G X .313
46	9030	WASHER 5/16 IL ZINC
47	3363-2	CHAIN GUARD MTG. BRACKET
48	5135	TINNERMAN NUT
49	1194	WASHER 3/4 SAE FLAT Z
50	6073	CHAIN 35 X 72P INC ML

REF	PART #	DESCRIPTION
51	1269	MASTER LINK 35
52	3362	CHAINGUARD COVER
53	6038	STEERING WHEEL
54	9709	COMPRESSION SPRING
55	1019	CABLE TIE - 7INCH
56	1046	NUT 5/8-11 TOPLOCK HEX ZINC
57	1264	BOLT 1/2-13 X 3.75 HHCS G2 ZINC
58	13503	NUT 1/2-13 CENTERLOCK HEX ZINC
59	9110	SHOULDER BOLT 5/16-18 X 5/8 THRD
60	9091	WASHER FLAT 3/8 SAE N ZINC
61	1189	NUT 5/16-18 TOPLOCK HEX ZINC
62	1263	NUT 5/16-18 HEX WHIZ FLANGE ZINC
63	1846	BOLT 1/4-20 X .750 HHCS G5 ZINC
65	1847	BOLT 1/4-20 X 1.00 HHCS G5 ZINC
66	1849	BOLT 1/4-20 X 1.50 HHCS G5 ZINC
67	9502	PEDAL SPRING - LEFT WOUND
68	9503	PEDAL SPRING - RIGHT WOUND
69	9057	NUT 1/4-20 TOPLOCK ZINC
70	1854	WASHER NBR 14 FLAT ZINC
71	9118	CLEVIS PIN 1/4 X 1.250 ZINC
72	1389	BUSHING .25ID X .031G X .313
73	9116	COTTER PIN 3/32 X .750 Z
74	6046	BOLT NBR 10-24 X .50 HHMS ZINC
75	6039	WASHER NBR 10 IL ZINC
76	9145	BOLT 3/8-16 X 1.75 HHCS G5 ZINC
77	9146	BOLT 3/8-16 X 1.50 HHCS G5 ZINC
78	9085	NUT 3/8-16 TOPLOCK HEX ZINC
80	11330	DECAL SHEET - WARNINGS
82	10465	SIDE PANEL
85	1119	SPACER .625ID 1.062OD .125 THK
86	1119	SPACER .625ID 1.062OD .125 THK (3 PCS)
88	1982-2	PEDAL LATCH - BLACK
91	9103	BOLT 1/4-20 X 2.00 HHCS G2 ZINC
92	9080	BOLT 1/4-20 X 2.75 HHCS G2 ZINC
93	9160	BOLT 1/4-20 X .875 HHCS NYLOCK G5 ZINC
94	5839	BOLT 1/4-20 X .750 HHCS WHIZ FLANGE Z
95	9058	NUT 5/16-24 HEX JAM ZINC
97	4943-2	BODY SUPPORT TUBE - BLACK
98	BODY	SPECIFY COLOR
99	3463	RUBBER WASHER 1/4
102	9796	BOLT NBR 12-24 X .500 SELF TAPPING Z
103	1463	BLACK INSULATING BUSHING
104	9104	WASHER NBR 10 FLAT ZINC
105	1119	SPACER .625ID 1.062OD .125 THK
NI	6985	SEAT SLIDE KIT
NI	8778	SEAT BELT

NI = NOT ILLUSTRATED

ASM = ASSEMBLY

5HP MODEL ONLY

MANCO

