

Operator's Manual SUPPLEMENT

MANCO MODEL NO.
813-00

WARNING:
Read Engine
Owner's Manual,
Vehicle Operator's
Manual, and
Supplement
Carefully Before
Operating
Vehicle.

Parts List



ORDERING PARTS

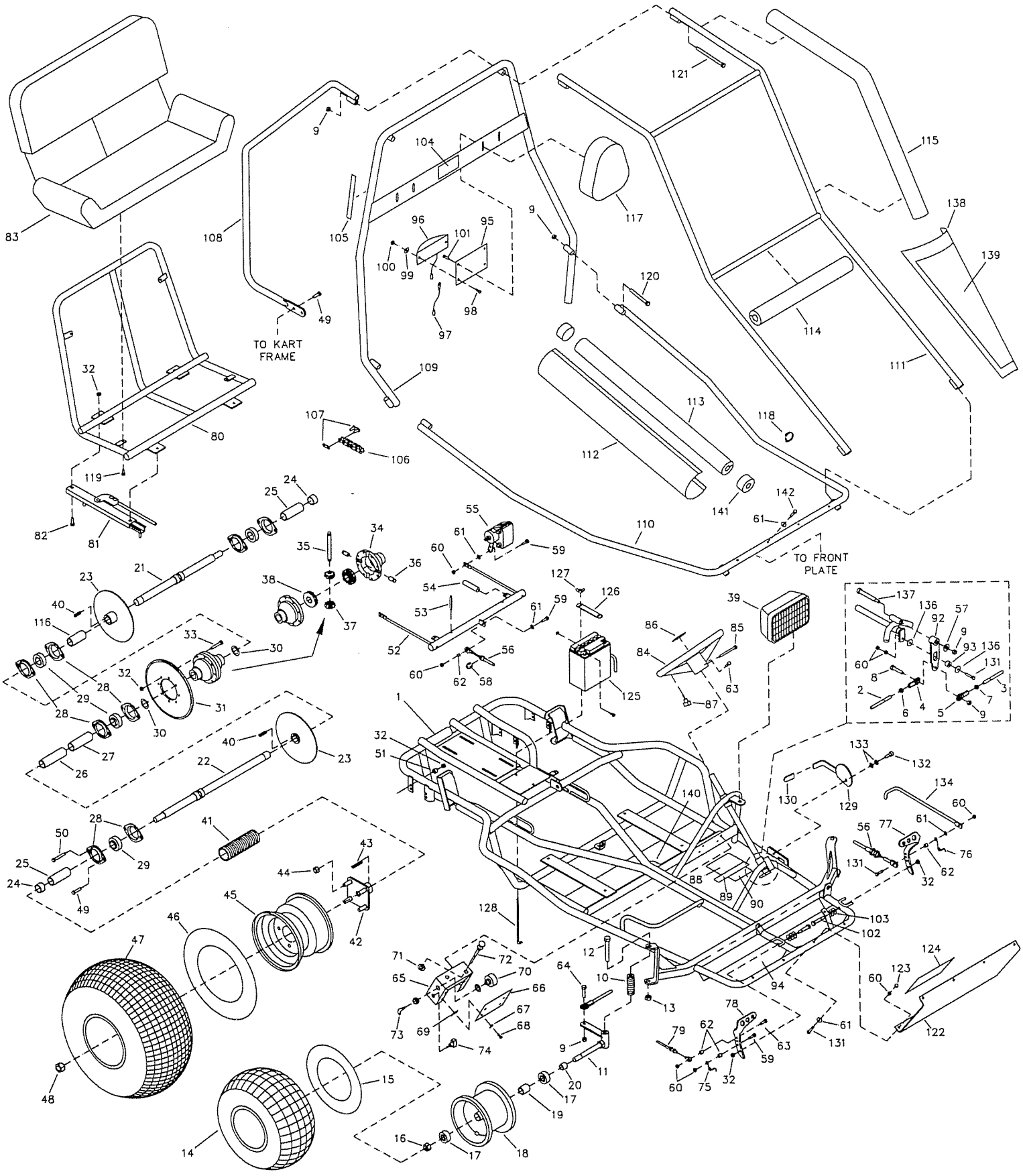
FAST & EASY!

- 1) Seek Part(s) from your models illustrated diagram, cross over REF# to PART#
- 2) Type PART# into sites [Search Box] at GoKartsRus.com TIP! - RIGHT CLICK LINK, SELECT OPEN IN NEW TAB
- 3) Add all needed parts to Shopping Cart | Complete "Checkout" | ✓ Done!

If a part does not come up in a Site Search, please [Contact Us](#) (include part# in email)

LOWEST PRICES!

BEFORE OPERATING THIS VEHICLE, THE OWNER AND/OR OPERATOR MUST UNDERSTAND THE VEHICLE WAS NOT DESIGNED OR MANUFACTURED TO MEET SPECIFICATIONS FOR USE ON PUBLIC ROADS, STREETS, HIGHWAYS, OR THOROUGHFARES AND HAVE READ AND HAVE AN UNDERSTANDING OF ALL THE INSTRUCTIONS FOR SAFE ASSEMBLY AND OPERATION AS WELL AS THE INSTRUCTIONS GOVERNING THE ENGINE AND OTHER PORTIONS OF THE VEHICLE.

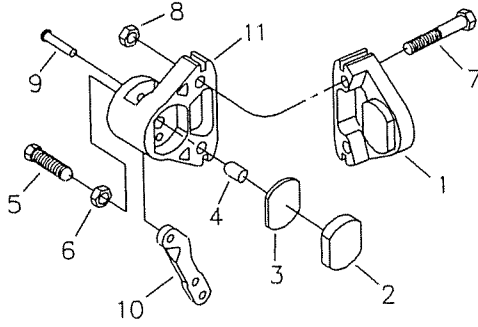


REPAIR PARTS - 813-00

REF. NO.	PART NO.	DESCRIPTION	REF. NO.	PART NO.	DESCRIPTION
1	8675-5	Frame - Red	72	8118	Choke Cable
2	8341	Tie Rod, 23 inch	73	2290	Ignition Key
3	3224	Tie Rod, 8-3/4 inch	74	6391	Light Switch Assembly
4	1414	Rod End - RH	75	9503	Spring, Right Wound
5	1415	Rod End - LH	76	9502	Spring, Left Wound
6	9092	Nut, 3/8-24 RH Jam	77	1436	Brake Pedal
7	9094 <i>6034</i>	Nut, 3/8-24 LH Jam	78	6309	Throttle Pedal, Trimmed
8	9145	Bolt, 3/8-16 x 1-3/4"	79	9345	Throttle Cable
9	9085	Nut, 3/8-16 Toplock	80	8688-2	Seat Frame Weldment
10	8448	Compression Spring	81	6722	Seat Slide Pair
11	2457	Spindle, Right	82	2264	Bolt, 5/16-18 x 3/4"
NI	2458	Spindle, Left	83	8692	Seat Back/Bottom
12	8453	Bolt, 1/2-13 x 6-1/2"	84	6038	Steering Wheel
13	1012	Nut, 1/2-13 Toplock	85	9080	Bolt, 1/4-20 x 2-3/4"
14	4915	Tire, 145/70 x 6 Knobby	86	1689	Decal, Steering Wheel
15	3802	Inner Tube, 6"	87	6394	Stop Switch Assembly
16	1046	Nut, 5/8-11 Toplock	88	4504	Decal, Yellow Warning
17	5090	Bearing, 5/8 ID	89	8153	Decal, Age Restriction
18	9309FP	Wheel Assembly, Front (incl. 14-19)	90	8399	Decal, Seat Belt Warning
19	5950	Spanner, 5/8 ID x 2-1/8"	91	1848	Bolt, 1/4-20 x 1-1/4"
20	5157	Spacer, 5/8 ID x 3/4"	92	9834-2	Steering Crank Weldment
21	8327	Axle Weldment - Short	93	9873	Cam Follower Bearing
22	8328	Axle Weldment - Long	94	1441	Decal, Front Floor Pan
23	6314	Brake Rotor	95	6305-2	Tail Light Bracket
24	4914	Spacer, 1" ID x 9/16"	96	6508	Tail Light Assembly
25	8462	Spacer, 1" ID x 2-3/4"	97	6319	Tail Light Ground Wire
26	4662	Spacer, 1" ID x 4-1/4"	98	9106	Bolt, #10-32 x 1/2"
27	4659	Spacer, 1" ID x 3-3/4"	99	6039	Washer, #10 Internal Lock
28	6617	Bearing Flange	100	6193	Nut, #10-32 Acorn
29	3941	Bearing, 1" ID	101	5839	Bolt, 1/4-20 x 3/4" Flanged Whiz
30	PX2970	#9 Machinery Bushing	102	1447	Pedal Bolt
ASM	8344	Differential/Sprocket Asm. (incl. 31-38)	103	9091	Washer, 3/8 Flat
31	6819	Sprocket - 54 Tooth	104	8138	Decal, Warning: Long Hair
32	1189	Nut, 5/16-18 Toplock	105	6540	Decal, Warning: Wear Helmet
33	9186	Bolt, 5/16-18 x 1-1/2 GR5	106	9343	Chain, 420 x 71 Links plus Master Link
34		Housing w/ Bearing	107	2037	Master Link, 420 Chain
35		Pinion Shaft	108	8702-5	Rear Bar
36		Pinion Shaft Plug	109	8700-5	Center Bar
37		Pinion Gear	110	8699-5	Front Bar
38		Bevel Gear	111	8701-5	Overhead Bar
39	6364	Headlight Assembly	112	8729	Arm Pad Cover
40	1775	Key, 1/4 sq. x 1-1/4"	113	8726	Foam, 26" Gray
41	K810-00	Axle Guard Kit	114	8728	Foam, 19-1/2" Gray
42	1557	Wheel Hub w/Studs	115	8725	Foam, 37" Gray
43	6123	Key, 1/4 sq. x 1-3/4"	116	8463	Spacer, 1" ID x 2.625"
44	1428	Nut, 1/2-13 Cone Wheel	117	8735	Headrest
ASM	1412	Wheel Asm, Rear (incl. 45-47)	118	8730	Plastic Hose Clamp, 1-1/4" ID
45	1451	Wheel Rim, 8"	119	1876	Bolt, 1/4-20 x 5/8" Flanged Whiz
46	1430	Inner Tube, 8" (Repair Part Only)	120	2386	Bolt, 3/8-16 x 3-1/2"
47	1452	Tire, 22 x 11 - 8 Tubeless	121	6452	Bolt, 3/8-16 x 5"
48	9162	Nut, 3/4-10 Toplock	122	8704-5	Front Plate - Red
49	9176	Bolt, 5/16-18 x 1"	123	6193	Nut, #10-32 Acorn
50	6573	Bolt, 5/16-18 x 1-3/4"	124	8830	Decal, Front Plate
51	9674	Spacer, 3/8 ID x 3/8"	125	3633	Battery
52	8331-2	Brake Link Weldment	126	9642-2	Battery Clamp Bar
53	9455	Spring Pin	127	9468	Nut, #10-32 Nylock Wing
54	9780	Extension Spring	128	9430	Battery Hold Down Rod
55	8197	Brake Calliper, Left	129	8673-2	Parking Brake Handle
NI	8444	Brake Calliper, Right	130	4900	Brake Handle Cover
56	8640	Brake Cable	131	1849	Bolt, 1/4-20 x 1-1/2"
57	9022	Washer, 1/2 Flat	132	9172	Bolt, 3/8 x 1/4 Shoulder
58	9174	E-Ring	133	6441	Washer, 3/8 ID Spring
59	1847	Bolt, 1/4-20 x 1"	134	8672	Parking Brake Rod
60	9057	Nut, 1/4-20 Toplock	135	6440	Nut, 5/16-18 Jam
61	1854	Washer, No. 14 Flat	136	9872	Washer, 1/4 Flat
62	1389	Bushing, 1/4" ID x 5/16"	137	9871	Shoulder Bolt, 1/2 x 3
63	9160	Bolt, 1/4-20 x 7/8"	138	2257	Fairing
64	9146	Bolt, 3/8-16 x 1-1/2"	139	8734	Decal, Fairing
65	6296-2	Control Box	140	8676	Grommet
66	9528-2	Cover Plate	141	6880	End Cap, 1-1/4" Hole
67	6039	Washer, #10 Internal Lock	142	1865	Bolt, 1/4-20 x 1-3/4"
68	6046	Bolt, #10-24 x 1/2"	NI	9247R4	Assembly Instructions
69	5135	Nut, #10 Tinnerman	NI	6477	Dingo Operator's Manual
70	6344	Start Switch w/Key	NI	8121	Honda Engine Manual
71	1469	Washer, Choke Cable	ASM		ASM = Assembly

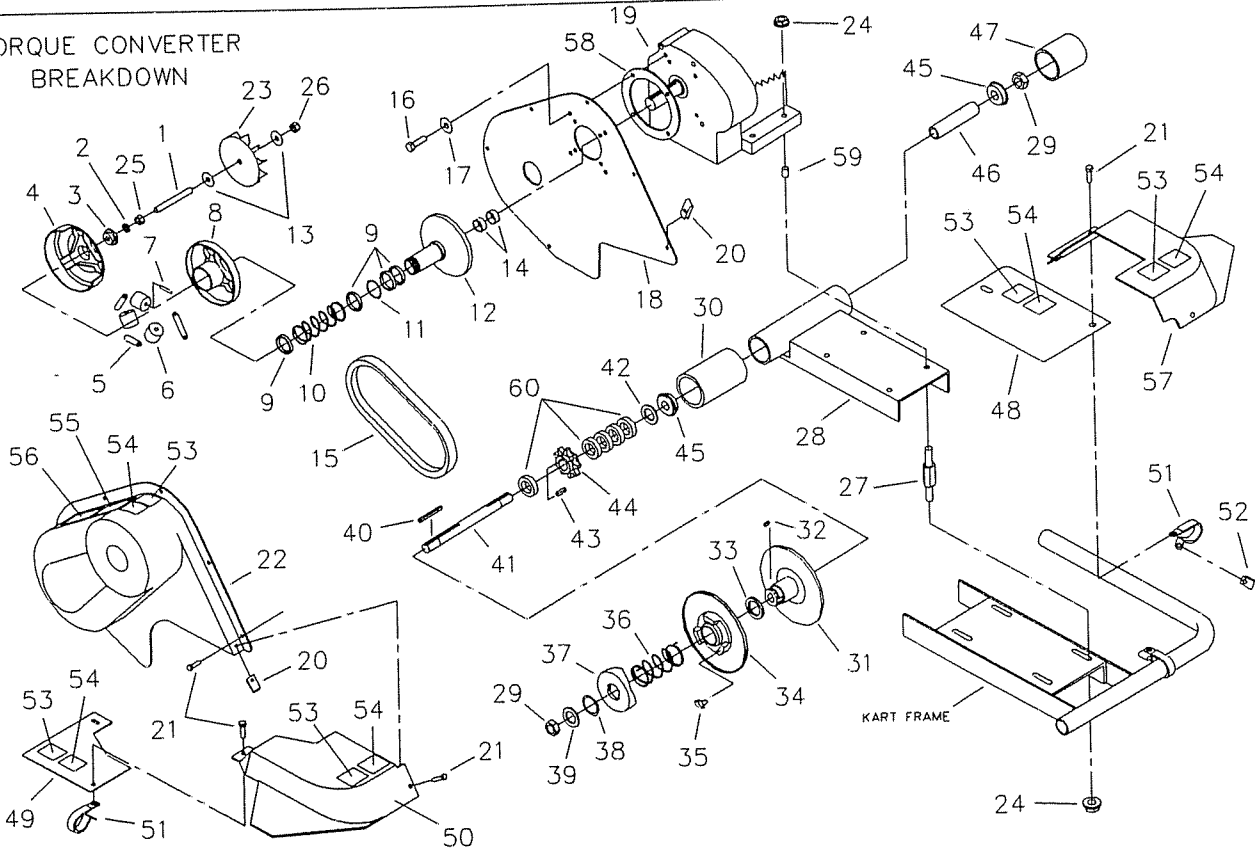
NI = Not Illustrated

CALIPER BREAKDOWN



REF. NO	PART NO	DESCRIPTION
ASM	8197	Brake Caliper (incl. 1-11)
ASM	9810	Brake Pad Svc Kit (incl. 1-3)
1	*	Anvil w/Lining
2	*	Backing Plate
3	3928	Brake Lining
4	3930	Actuator Pin
5	3931	Adjuster Pin
6	3932	Nut, Jam
7	9158	Bolt, 3/8-16 x 2-1/4"
8	9085	Nut, 3/8-16 Toplock
ASM	6534	MB-1 Service Kit (incl. 9-11)
9	*	Groove Pin
10	*	Lever
11	*	Brake Housing

TORQUE CONVERTER BREAKDOWN



REF. NO	PART NO	DESCRIPTION
1	8689	Stud, 3/8-24 x 4-1/4"
2	1130	Washer, 3/8 Split Lock
3	2468	Washer, Pilot
ASM	2594	Driver Pulley Assembly (incl. REF. 4-12)
4	*	Cover and Drive Plate
5	2472	Extension Spring
6	2470	Cam Roller
7	2471	Spring Clip
8	*	Moveable Face and Hub
9	2474	Guide Bushing
10	2475	Compression Spring
11	*	Retaining Ring
12	*	Fixed Face and Post
13	9125	Washer, 3/8 Flat
14	1082	Spacer, 1" ID x 7/16
15	6814	Belt, Symmetrical
16	9101	Bolt, 5/16-24 x 3/4"
17	9060	Washer, 5/16 Plain
18	8745	Cover Panel
19	8111	Engine, 13HP Honda
20	2449	Nut, Tinnerman
21	9006	Bolt, 1/4-20 x 1/2" Whiz Flange
22	8739	Cover Assembly

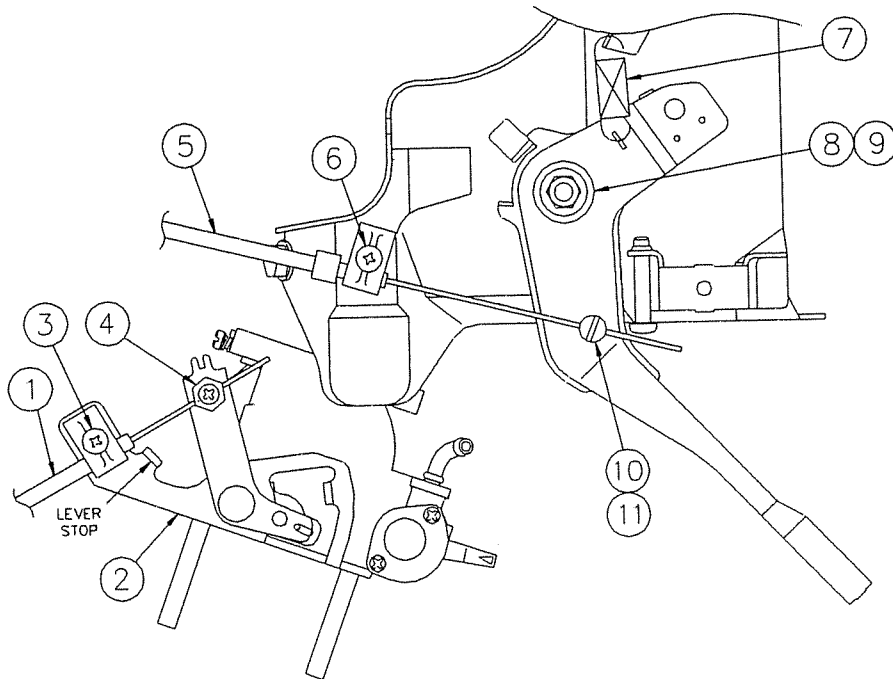
REF. NO	PART NO	DESCRIPTION
23	8600	Impeller
24	1263	Nut, 5/16-18 Flange
25	2388	Nut, 3/8-24 Hex
26	9123	Nut, 3/8-24 Toplock Hex
27	6374	Engine Support Stud
28	8209-2	Chassis
29	9155	Nut, 5/8-11 Jam
30	G0312	Guard, 3.12"
ASM	8664	Driven Pulley Assembly (incl. REF. 31-39)
31	*	Fixed Face and Post
32	1031	Key, 3/16sq x 1/2"
33	2483	Spacer
34	*	Moveable Face and Cam
35	2516	Button Insert
36	2480	Torsion Spring
37	*	Fixed Cam
38	2478	Thrust Washer
39	2477	Retaining Ring
40	3403	Key, 3/16sq x 2"
41	8693	Jackshaft 14.75"
42	1119	Spacer, 5/8ID x 1/8"
43	8721	Key, 3/16 x 1/8 x 1/2"
44	8720	Sprocket, 9T #420 Half-Keyway

REF. NO	PART NO	DESCRIPTION
45	5090	Bearing
46	2430	Spanner
47	8194	Cap, Plastic
48	8443	Right Deck Cover
49	8742	Left Deck Cover
50	8740	Caliper Cover - Left
51	8266	Loop Clip
52	8227	Clip Nut
53	1049	Decal, Caution
54	4912	Decal, Warning: Guard
55	8138	Decal, Warning: Entanglement
56	6958	Decal, Tire Pressure
57	8741	Caliper Cover - Right
58	8880	Spacer Ring
59	9533	Engine Stud Bushing
60	1937	Spacer, 5/8" I.D. x 1/4"
NI	9677	Decal, Warning: Hot Surfaces
NI	9678	Decal, Warning: Eng. Exhaust
NI	5964	Decal, Oil Warning

* = Not Available Separately
 ASM = Assembly NI = Not Illustrated

10516

13-HP Honda Engine Model GX390K1QNE



Choke Cable Installation: Slide the end of the inner wire of choke cable (Ref. 1) through the cross-hole in the cable stop (Ref. 4). Do not tighten the set screw in the cable stop at this time. Place cable clamp and clamp screw (Ref. 3) over choke cable, and start clamp screw into the threaded hole in choke control (Ref. 2). Pull the knob of the choke cable (located on the console below the steering wheel) out approximately 1/4 inch. Ensure that the rotating lever on the choke control is in the "Run" position as shown above. Position cable housing under cable clamp so that the end of housing does not extend beyond the small upward-bent tab (lever stop), and tighten clamp screw (Ref. 3). **DO NOT OVER TIGHTEN CLAMP SCREW.** Tighten the set screw in the cable stop (Ref. 4). Ensure that choke moves freely, and stops against the lever stop, not on the end of cable housing.

Throttle Cable Installation: Place the small diameter of metal ferule on the end of throttle cable (Ref. 5) under cable clamp as shown, and tighten clamp screw (Ref. 6). Pass throttle cable through the cross-hole in the cable stop (Ref. 10). Pull cable tight to remove slack, and tighten the cable stop set screw (Ref. 11).

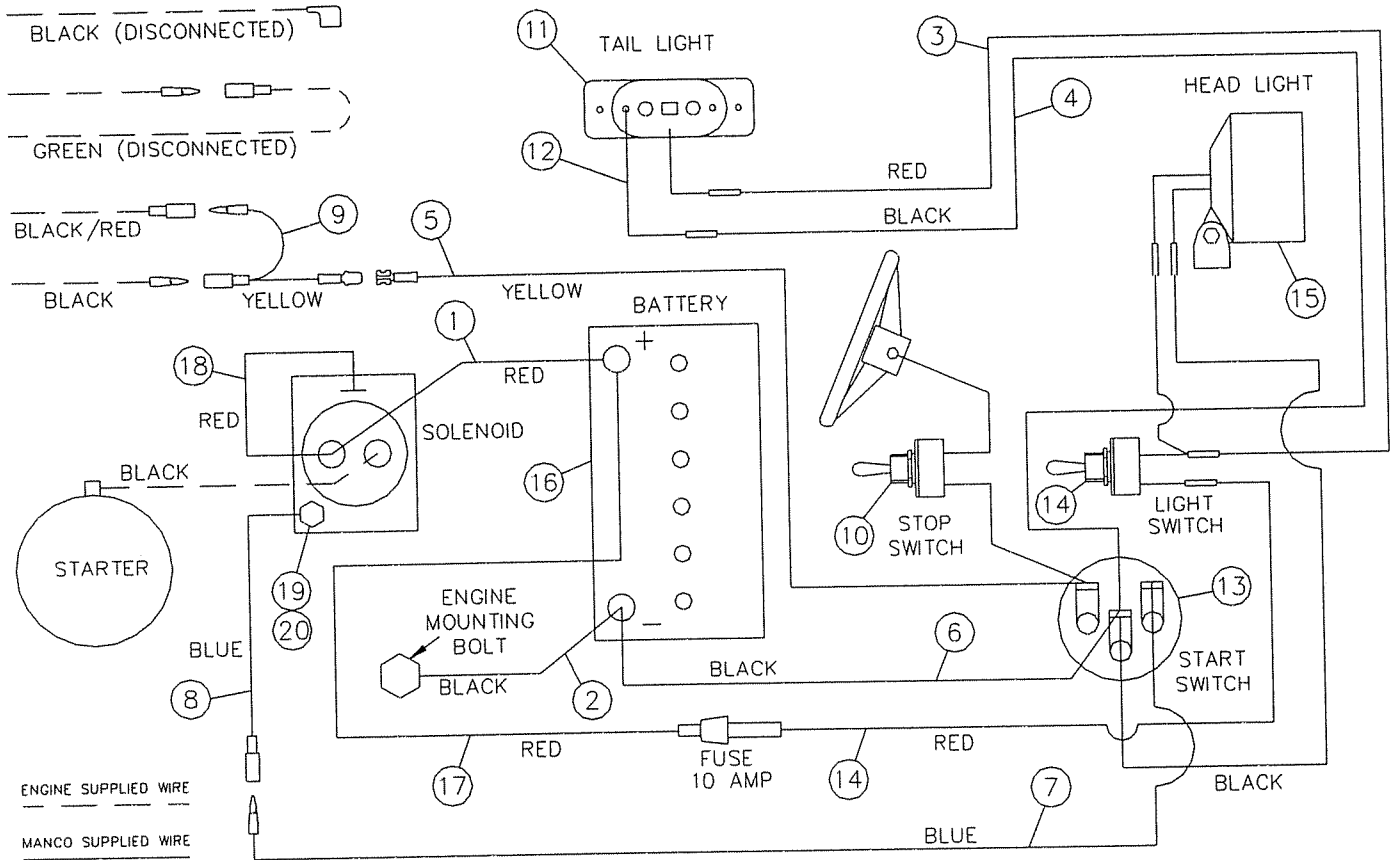
1. Ensure that the extension spring (Ref. 7) is installed as shown above.
2. Ensure that the throttle pedal is in the rearward (idle) position.
3. Ensure that the throttle pedal contacts the pedal stop in front of the pedal at the same time engine throttle linkage reaches its maximum (high speed) position so that cable is not stretched or broken when force is applied. Adjustment can be made by turning the two nuts on the pedal-end of throttle cable.
4. Ensure that the two nuts on the pedal-end of throttle cable are tightened against the bracket on the frame.

REF NO.	PART NO.	DESCRIPTION	REF NO.	PART NO.	DESCRIPTION
1	8118	Choke Cable	6		Clamp Screw (incl. with engine)
2	8116	Choke Control (incl. ref. 3 & 4)	7	9346	Extension Spring
3		Clamp Screw	8	9091	3/8 Plain Flat Washer
4		Cable Stop	9	1854	#14 Plain Flat Washer
5	8173	Throttle Cable	10	2748	Cable Stop Nut
			11	2666	Cable Stop Set Screw

WIRING DIAGRAM

Models 393-00 and 813-00

13-HP Honda Engine Model GX390K1QNE



REF NO.	PART NO.	DESCRIPTION	REF NO.	PART NO.	DESCRIPTION
1	3611	Battery Cable Red 10 Inch	8	8106	Solenoid Wire Adapter (Blue)
2	3610	Battery Cable Black 9 Inch	9	8107	Stop Wire Adapter (Yellow)
ASM	9376P	Wiring Harness	10	6394	Stop Switch Assembly
3	9381	Tail Light/Switch Wire (Red)	11	6853	Tail Light Assembly
4	9379	Tail Light/Switch Wire (Black)	NI		Tail Light Bulb
5	9383	Engine Stop Wire (Yellow)	12	6319	Tail Light Ground Wire
6	6386	Battery Ground Wire (Black)	13	6344	Start Switch
7	9385	Solenoid/Switch Wire (Blue)	14	6391	Light Switch Assembly
NI	6897	Poly Loom 6 Inch	15	6364	Head Light Assembly
NI	6897	Poly Loom 28 Inch	NI	2964	Head Light Bulb
NI	6505	Poly Loom 43 Inch	16	3633	Battery
NI	6793	Poly Loom "Tee"	17	9377	Battery/Light Switch Wire (Red)
NI	6813	Poly Loom "Outlet"	18	2093	Solenoid Jumper Wire (Red)
			19	8113	M5 x .8 x 12 Nylon Screw
			20	8114	#10 Nylon Washer